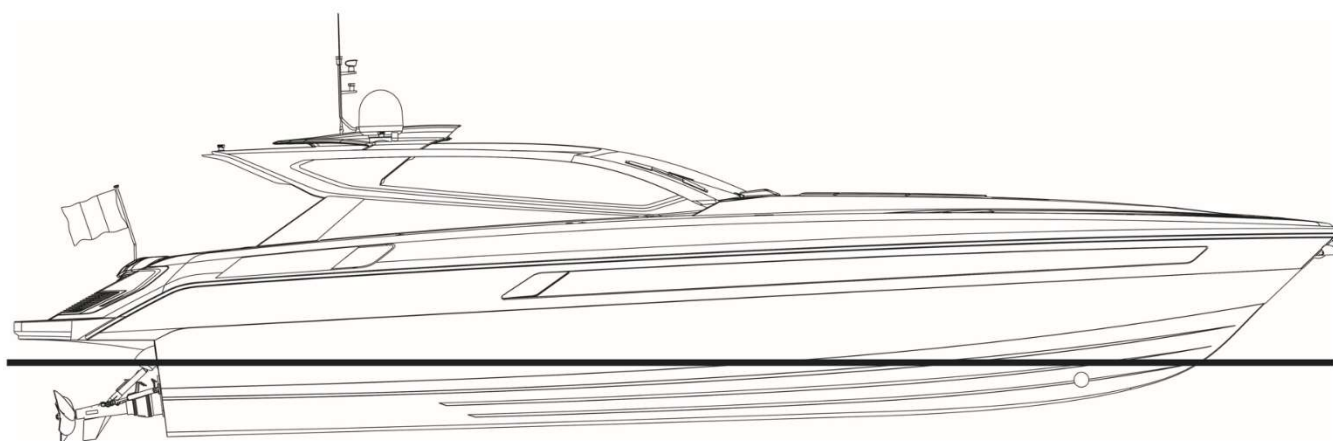




OTAM 70 HT DARTH VADER

TECHNICAL SPECIFICATION

Apr. 2022





OTAM 70 HT DARTH VADER

MAIN CHARACTERISTICS

Length Overall	22,27 mt
Waterline Length	17,56 mt
Beam (moulded)	5,30 mt
Draft (50% load)	0,99 mt
Draft (full load below propellers)	1,30mt
Displacement F.L.	52 ton.
Range	400+ Nm

Year of Construction:	2021
Builder Warranty:	Up to June 2023
Engine Hours:	120 / 122 (Apr.2022)
Generator Hours:	275 (Apr.2022)
Full Annual Arneson Serviced:	March 2022
Full Annual Generator Serviced:	March 2022
Full Annual Main Engine Serviced:	March 2022
Full annual Battery Check	March 2022

CONSTRUCTION MATERIAL

Hull and deck : GRP and Vinylester resin
Superstructure: GRP and Vinylester resin

CLASSIFICATION

RINA Rules Certification Class "B" pleasure Craft

MAIN ENGINES AND PROPULSION OPTION 1

nr. 2 Engines	MTU 12V2000M96X 2000 HP
nr. 2 Gearboxes	ZF 3050
nr. 2 Arnesons	ASD 14L
Nr.2 Propellers	Rolla 5 - Bladed

PERFORMANCE

Max Speed	48 knots
Cruise Speed	40 knots

GENERATOR

nr. 1 GenSet Kohler 20,5 Kw, 230 V AC 50 Hz Sound proofing enclosure and exhaust silencer

TANKS CAPACITY

Fuel Oil Tanks	6.500 Lt
Fresh Water Tanks	1.000 Lt
Black Water Tank	500 Lt
Grey Water Tank	500 Lt



AUXILIARY EQUIPMENT

Bow thruster: SIDE POWER QSH 400, diam.300mm
Flaps : Nr.2 Flaps
Water maker: nr. 1 x 130 lt/h Idromar
Air-conditioning: Tropical Frigomar
Boilers: nr.2 boilers x 80 lt/each

NAVIGATION EQUIPMENT

Magnetic compass: YES
Speed Log: RAYMARINE
Depth sounder: RAYMARINE
Autopilot: HUMMINBIRD
Radar: RAYMARINE RD424HD
Electronic chart system: nr.2 RAYMARINE AXIOM XL 19
Monitoring System: BOENING Integrated Systems
GPS: RAYMARINE

COMMUNICATION AND SATELLITE EQUIPMENT

VHF: RAYMARINE RAY 90 class D
V-SAT: nr.1 Sea Tel ST 24E

ENTERTAINMENT / SECURITY EQUIPMENT

TV: Samsung each cabin and Dining
Music system YES CUSTOM
Wi-fi all areas Included
Security cameras: (Nr.1 Engine Room, Nr.1 Aft deck)
Thermo Cameras: nr.2 Flir Engine Room

DOMESTIC APPLIANCES, EQUIPMENT AND LAUNDRY

Fridge and Freezer: MIELE
Oven: MIELE
Hotplates: MIELE
Microwave: MIELE
Wine Cellar: VITRIFRIGO
Icemaker: VITRIFRIGO
Dishwasher: MIELE
Washer and Dryer: HOOVER

HULL AND DECK EQUIPMENT

Anchors & chain: 1x60 kg - 1x100 mt length -12mm diameter
Windlass: Nr. 1 Custom Flush Up-Down Sanguinetti
Stern capstans: Nr. 2 1700W 220 V
Multifunction gangway / swim ladder: OPACMARE 5 Steps
Underwater lights: Nr.2 Underwater lights Indemar in stern



PAIN T SYSTEM:

Full Awl grip paint system, color Grey Nardo, Black and Chevy white internal paint

ACCOMMODATION

5 guests in 3 staterooms and 2 crew in 1 cabin with separate access

Living Area Main deck

Galley

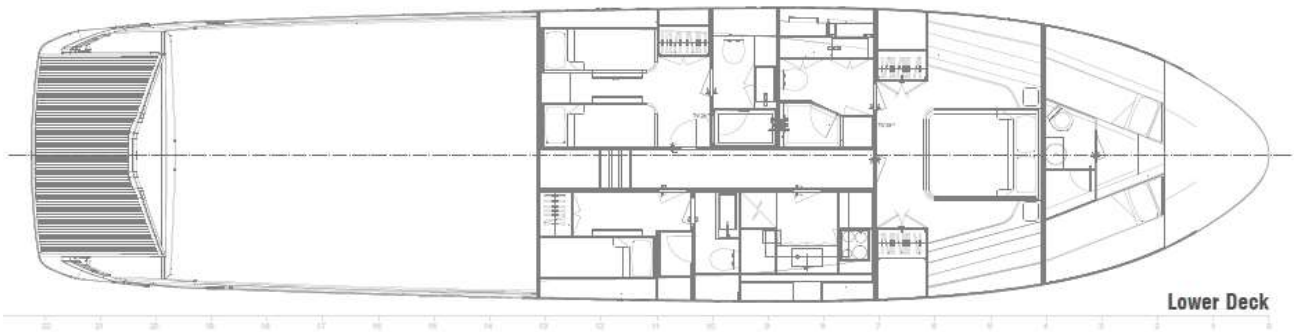
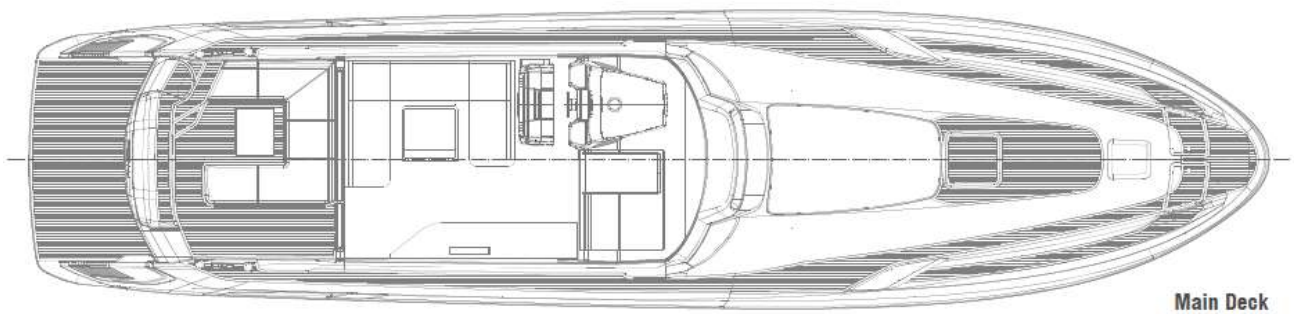
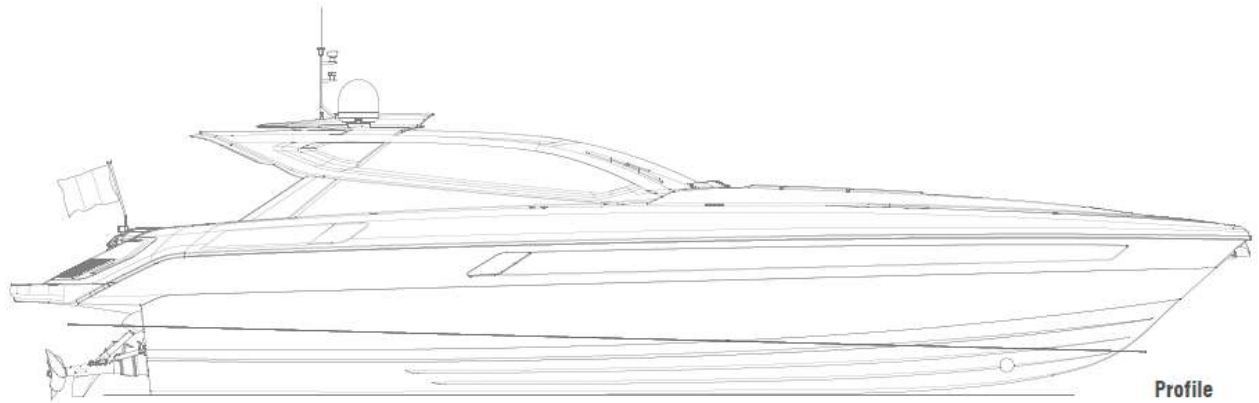
EXTRA EQUIPMENT OWNER REQUEST

- Interior Luxury Package including:
 - o Custom leather floor
 - o Marble sink tops in cabins
 - o Marble sinks in cabins
 - o Marble details in showers
 - o Mixed leather / aluminium / lacquered / Alcantara in interiors
 - o Back lighted mask in master cabin bathroom
 - o Custom paintings in Master cabin and Corridor
 - o Strip Led in corridor floor
 - o Bar top in black marble
 - o Custom made internal electric dinette table in mixed marble/leather/stainless steel with pouf
 - o Wine Cellar in dinette
 - o Ice maker in dinette
 - o Cushions fabric (external areas)

- Custom audio system with nr.20 speakers (external areas and dinette) and nr.2 subwoofers
- Custom Boening Navigation System
- External cockpit air conditioning
- External cockpit table base up / down electrically operated
- Double hot water system
- Custom fore peak sun bed
- Custom back-lighted name plate and mask
- Camera in bow anchor Plate
- Extra monitoring screen in crew cabin
- Crew cabins detailed interiors with separate shower
- Electrical access door to lower deck
- Main salon up and down electric window
- Bigger anchor and longer chain compared to standard
- Air compressor in Engine Room
- Spray coated antifouling International



OTAM 70HT GA



OTAM