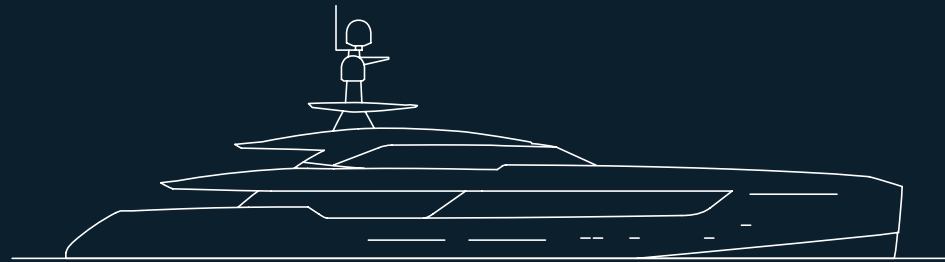




**TANKOA**  
ITALIAN YACHTS



**S** 501



## Welcome to Tankoa Yachts

Tankoa epitomises the boutique shipyard. Every Tankoa yacht combines the Italian flair for design with luxury components, specialist details and superior production – to give life to owners' dreams.

Excellence means always moving forward. Constant progress is the Tankoa way.

Situated in Genoa Sestri Ponente, the Tankoa Yachts shipyard thrives at the heart of a city with a millennial tradition of navigation and ship building, offering a unique context and the added value of a strategic position in the Mediterranean sea.



S 501

*Beauty and Charisma*





Tankoa Yachts

# Tankoa S501 series

50 m

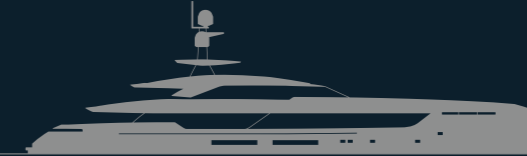
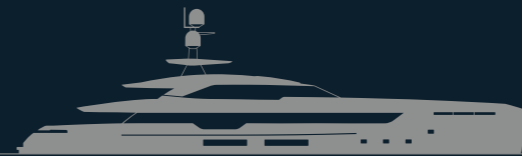
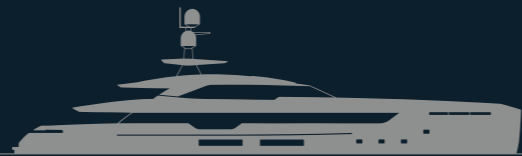
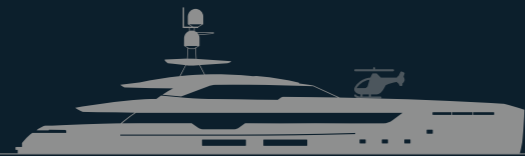
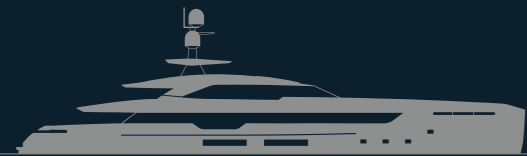
499

Gross Tons

AI

Aluminium

Hull and superstructure  
entirely built in light alloy 5083



M/Y Vertige

Traditional Propulsion

pg. 8

M/Y Bintador

Hybrid Propulsion

pg. 18

M/Y Olokun

Traditional Propulsion

pg. 28

M/Y Kinda

Hybrid Propulsion

pg. 38

C107

Traditional Propulsion

Delivery Early 23

pg. 46

C110

Traditional Propulsion

Delivery Spring 2025

pg. 56



TANKOA YACHTS - M/Y VERTIGE

Motor Yacht  
**VERTIGE**











Foldable balconies open out both sides to extend the terrace area and enhance the sense of boundless freedom. The open-air deck can be fitted with sunbeds, sofas, coffee tables and a bar. Owner's choice, naturally.

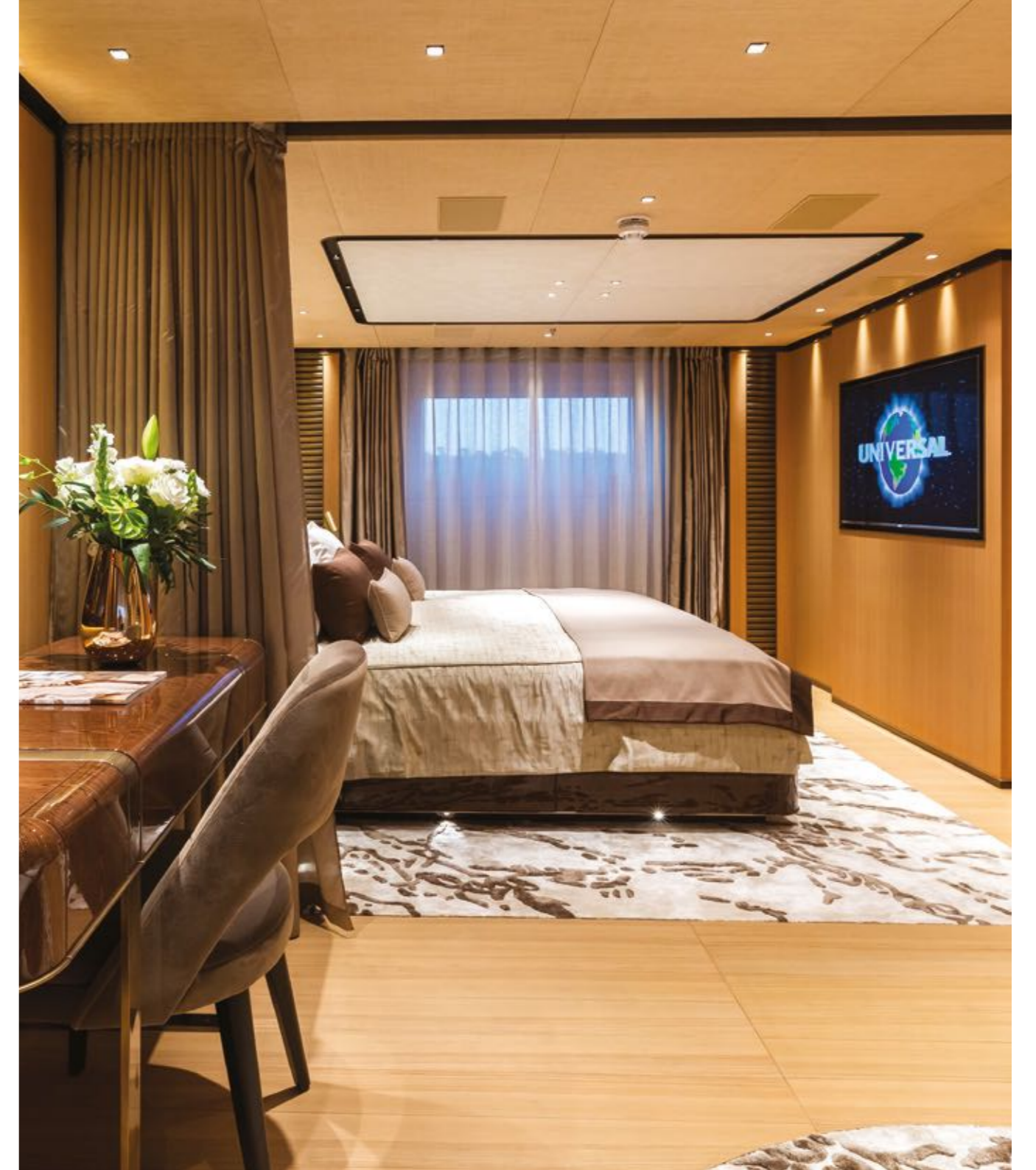
Main deck | **Aft balcony**







Main deck | Main saloon and Owner's suite







Main deck | Wide saloon with sunbeds

Motor Yacht

# VERTIGE

Data Sheet

Lenght overall	49,90 mt (165,00 ft)
Beam Max	9,40 mt (31,00 ft)
Draft at full load	2,40 mt (7,80 ft)
GRT	499 GT
Displacement Max	405 tons
Classification	Lloyds + MCA
Engines	MTU SV400054R 2 x kW 746 at 1.600 rpm
Propulsion	Twin shaft propellers 5 blades
Generators	2 x 125 kW
Bow thruster	110 kW
Stabilizer + Zero Speed	NAIAD
Fuel Capacity	65.000 lt (17.170 gal)
Max Speed at half load	16 Knots
Cruising Speed	14 Knots
Range at 12 Knots	5.000 n.m.
Hull and superstructure in light alloy (5083)	
Designed by Francesco Paszkowski Studio	



TANKOA YACHTS - M/Y BINTADOR

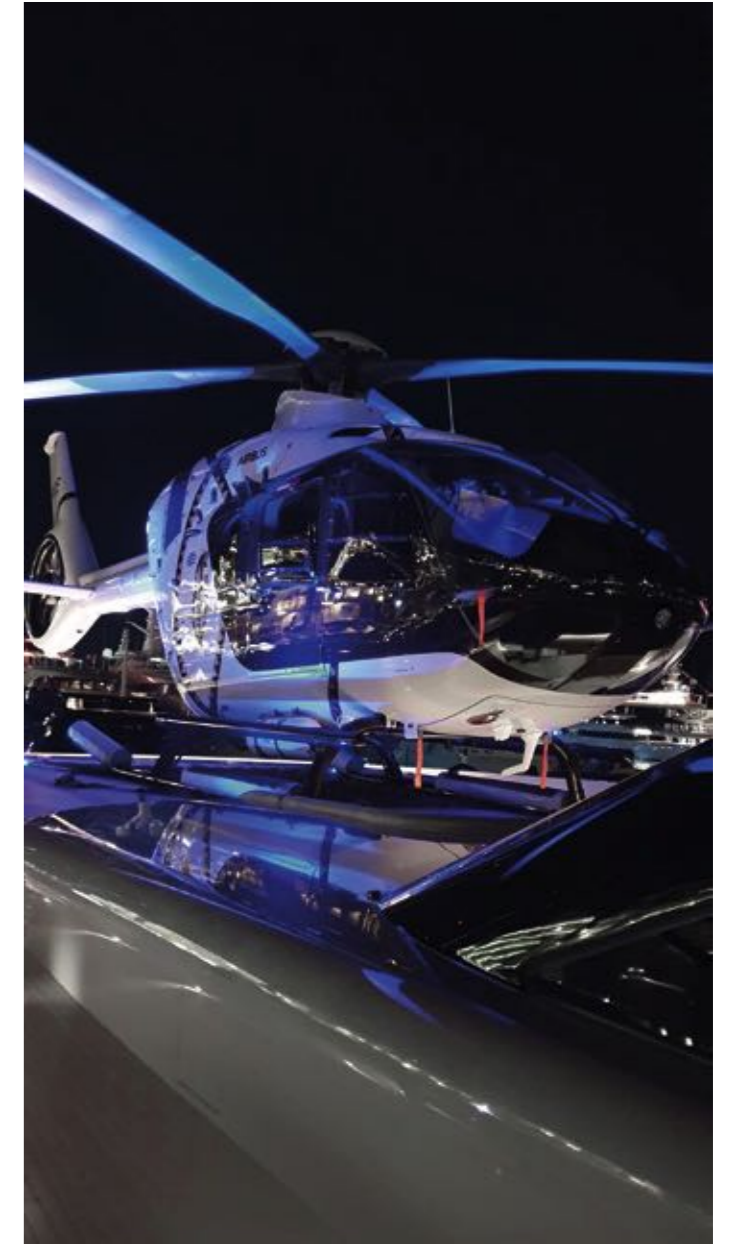
Motor Yacht  
**BINATDOR**







Upper deck | Touch and go helipad







Main deck | Dining and saloon











Main deck | Kitchen

Motor Yacht

# BINTADOR

Data Sheet

Lenght overall	49,90 mt (165,00 ft)
Beam Max	9,40 mt (31,00 ft)
Draft at full load	2,44 mt (8,00 ft)
GRT	499 GT
Displacement Max	410 tons
Classification	Lloyds
Engines	MTU 8V4000M54 2 x kW 895 at 1.800 rpm
Electric Engines by E-MotionPropulsion	2 x 300 kW
Propulsion	Twin shaft propellers 5 blades
Generators	2 x 250 kW
Bow thruster	100 kW
Stabilizer + Zero Speed	NAIAD
Fuel Capacity	57.300 lt (15.137 gal)
Max Speed at half load	18 Knots
Cruising Speed	14 Knots
Range at 12 Knots	4.500 n.m.
Hull and superstructure in light alloy (5083)	
Designed by Francesco Paszkowski Studio	



TANKOA YACHTS - M/Y OLOKUN

Motor Yacht  
**OLOKUN**



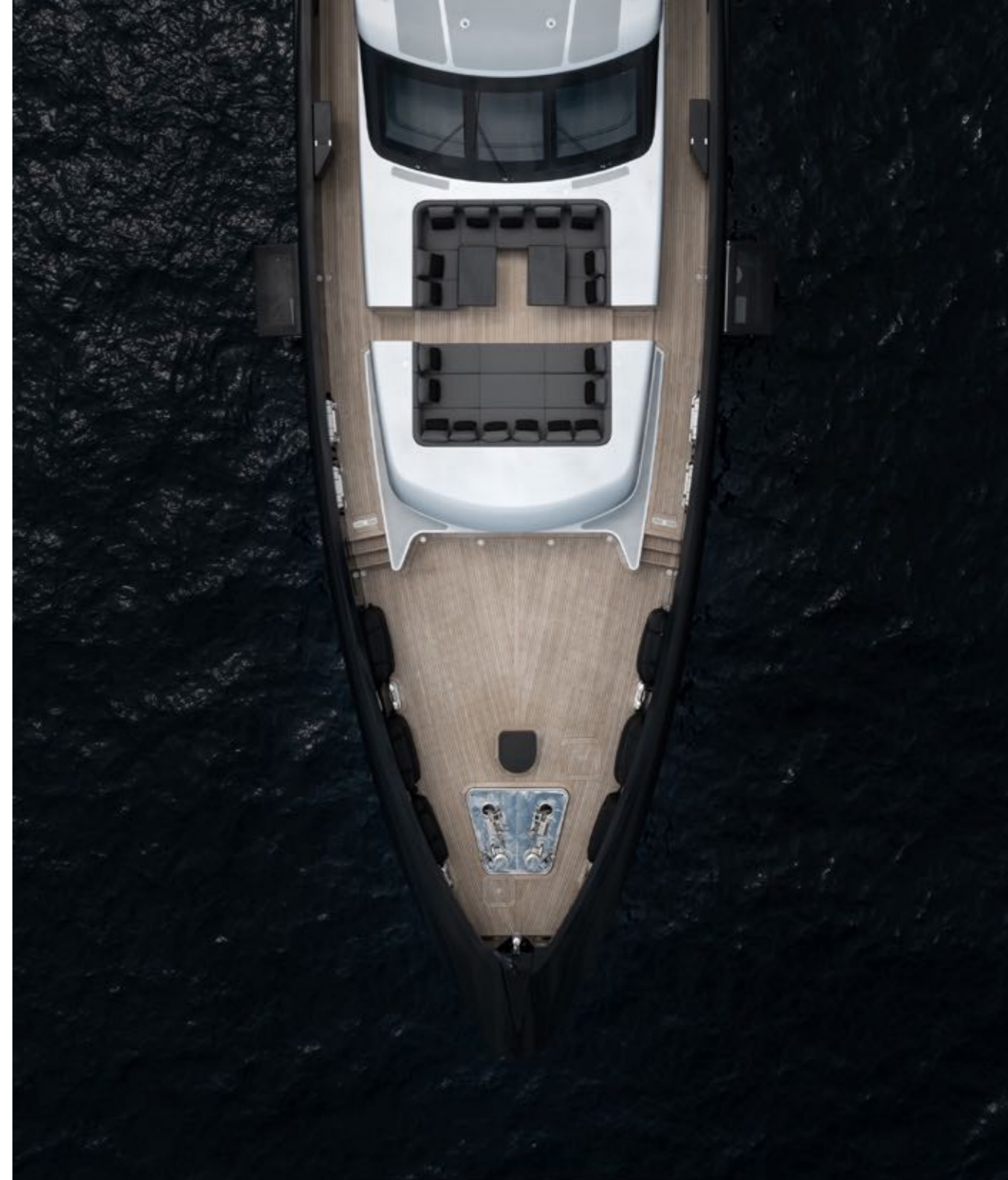








Beach club and Bow lounge











Main deck | Owner's suite balcony

Motor Yacht

# OLOKUN

Data Sheet

Lenght overall	49,90 mt (165,00 ft)
Beam Max	9,40 mt (31,00 ft)
Draft at full load	2,40 mt (7,80 ft)
GRT	499 GT
Displacement Max	405 tons
Classification	Lloyds
Engines	MTU 8V4000M54 2 x kW 895 at 1.800 rpm
Propulsion	Twin shaft propellers 5 blades
Generators	2 x 125 kW
Bow thruster	100 kW
Stabilizer + Zero Speed	NAIAD
Fuel Capacity	57.300 lt (15.137 gal)
Max Speed at half load	16,5 Knots
Cruising Speed	14 Knots
Range at 12 Knots	4.000 n.m.
Hull and superstructure in light alloy (5083)	
Designed by Francesco Paszkowski Studio	

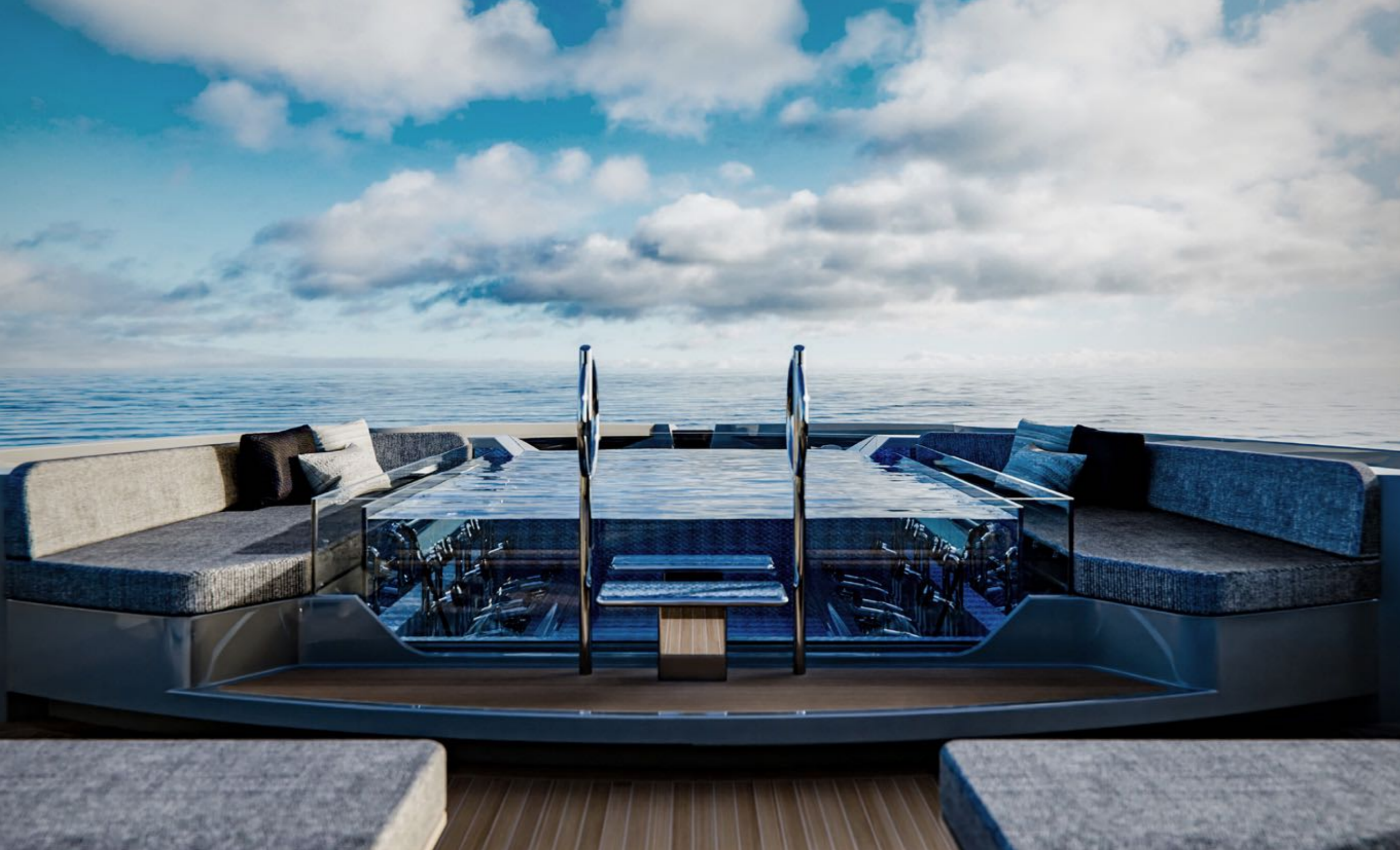


TANKOA YACHTS - M/Y KINDA

Motor Yacht  
KINDA











Main deck | Owner's suite and Main saloon







Lower deck | Lobby

Motor Yacht  
**KINDA**

Data Sheet

Lenght overall	49,90 mt (165,00 ft)
Beam Max	9,40 mt (31,00 ft)
Draft at full load	2,47 mt (8,10 ft)
GRT	499 GT
Displacement Max	418 tons
Classification	Lloyds
Engines	MAN D2862LE438 2 x kW 1.029 at 2.300 rpm
Electric Engines by E-Motion	2 x 200 kW
Propulsion	Twin shaft propellers 5 blades
Generators	2 x 250 kW
Bow thruster	100 kW
Stabilizer + Zero Speed	CMC
Fuel Capacity	57.300 lt (15.137 gal)
Max Speed at half load	18 Knots
Cruising Speed	14 Knots
Range at 12 Knots	4.700 n.m.
Hull and superstructure in light alloy (5083)	
Designed by Francesco Paszkowski Studio	



TANKOA YACHTS - C107

Tankoa  
C107











Upper deck | AI fresco dining and external lounge



Main deck | Wide saloon with sunbeds





Main deck | Aft balcony



Main and Upper saloon 53





Upper deck | Pool

Tankoa  
C107

Data Sheet

Lenght overall	49,90 mt (165,00 ft)
Beam Max	9,40 mt (31,00 ft)
Draft at full load	2,40 m (7,80 ft)
GRT	499 GT
Displacement Max	405 tons
Classification	Lloyds
Engines	MAN D2862LE446 2 x kW 1.029 at 2.300 rpm
Propulsion	Twin shaft propellers 5 blades
Generators	2 x 125 kW
Bow thruster	100 kW
Stabilizer + Zero Speed	CMC
Fuel Capacity	57.300 lt (15.137 gal)
Max Speed at half load	17 Knots
Cruising Speed	14 Knots
Range at 12 Knots	3.750 n.m.
Hull and superstructure in light alloy (5083)	
Designed by Francesco Paszkowski Studio	



TANKOA YACHTS - C110

Tankoa  
C110











Tankoa  
C110

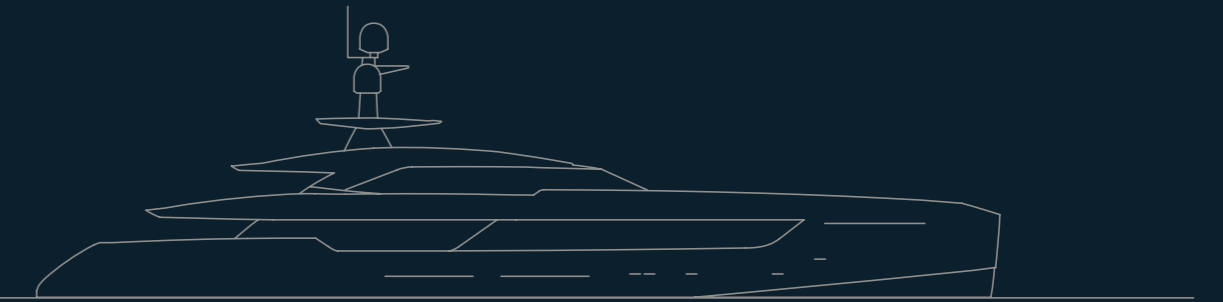
Data Sheet

Lenght overall	49,90 mt (165,00 ft)
Beam Max	9,40 mt (31,00 ft)
Draft at full load	2,42 mt (7,80 ft)
GRT	499 GT
Displacement Max	405 tons
Classification	Lloyds
Engines	CAT C32 2 x 1.193 kW at 2.300 rpm
Propulsion	Twin shaft propellers 5 blades
Generators	2 x 118 kW
Bow thruster	110 kW
Stabilizer + Zero Speed	CMC
Fuel Capacity	57.300 lt (15.137 gal)
Max Speed at half load	17 Knots
Cruising Speed	14 Knots
Range at 12 Knots	3.750 n.m.
Hull and superstructure in light alloy (5083)	
Designed by Francesco Paszkowski Studio	



Tankoa Yachts S501

# Propulsion system







## Traditional Propulsion

*Pace, space and grace*

The S501 is engineered for low consumption, long-range cruising and outstanding speed performance. The displacement hull features planing characteristics.

With its optimised engine, this is a yacht that really moves.

The S501 sails at a maximum speed of 18 knots using both main diesel engines for propulsion and one diesel generator to feed the hotel loads.

## Hybrid Propulsion

*Fuel efficient and quiet as a whisper*

In Diesel Electric Mode (DEM), two variable-speed generators feed the electric motors. With the main engines off, the S501 can achieve speeds up to 10.5 knots and fuel consumption of 12 litres per nautical mile. DEM saves fuel and limits noise.

In Hybrid mode, one of the two main engine shafts generates the electrical power to run the second motor for propulsion and hotel needs. At 10 knots the yacht has a cruising range of 4.500 nautical miles. In this mode the two diesel generators are turned off during navigation and the running hours per engine and per generator are dramatically reduced.

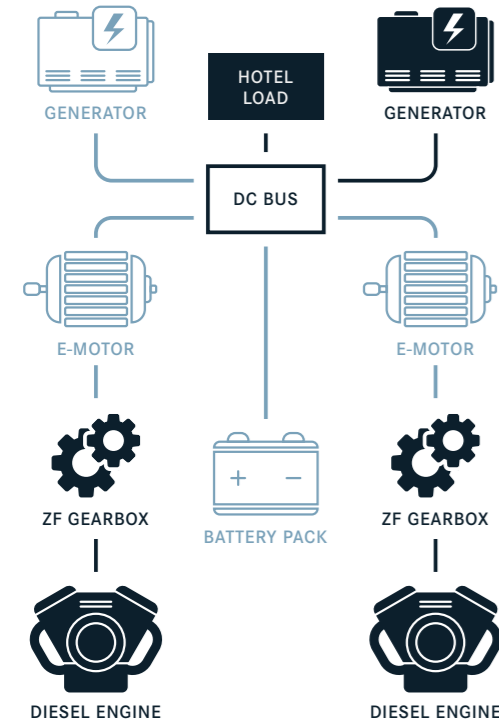
In Booster Mode, both main engines and generators supply power to the two electric motors and feed the hotel loads. The yacht finds a top speed of 18 knots with no strain on the engines.



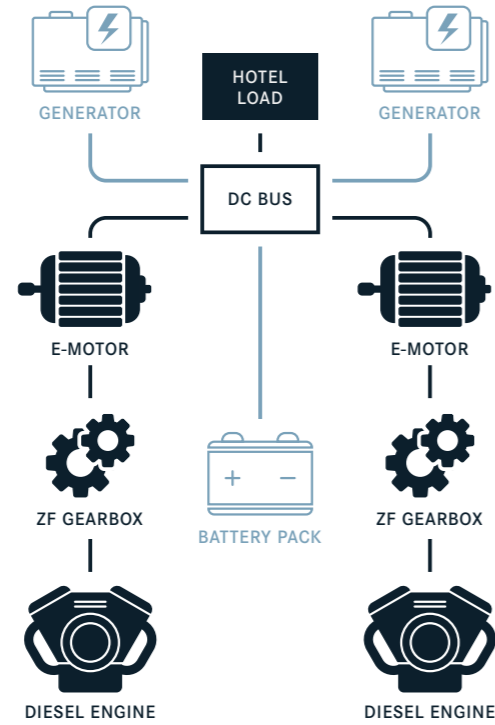
# Hybrid propulsion system options

■ ON ■ OFF

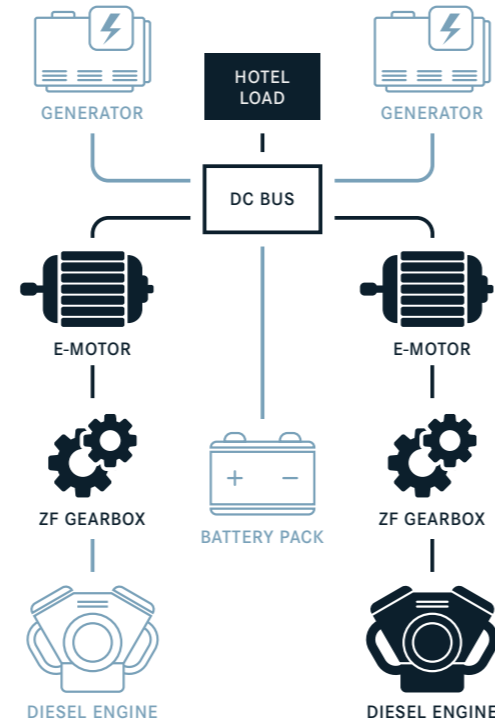
TRADITIONAL MODE



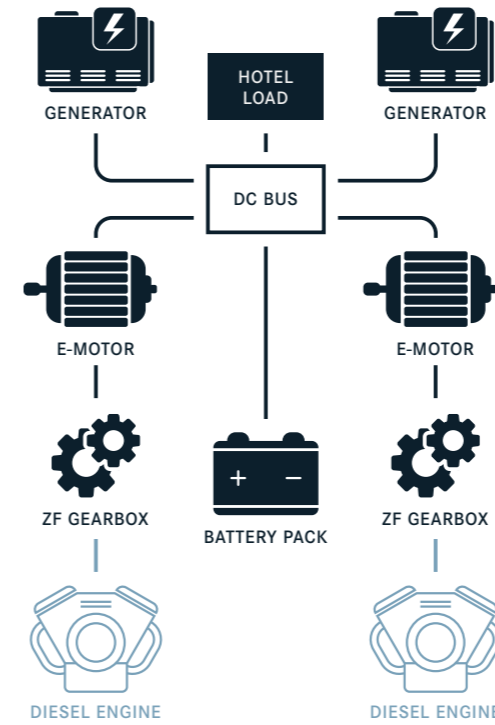
SHAFT ALTERNATOR MODE



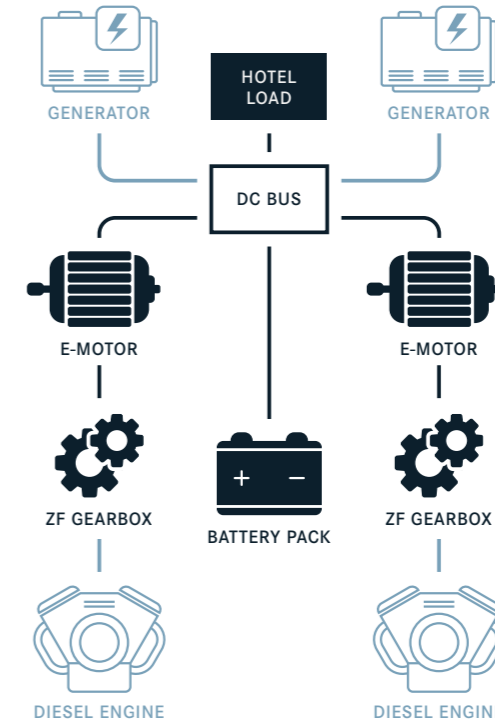
HYBRID MODE



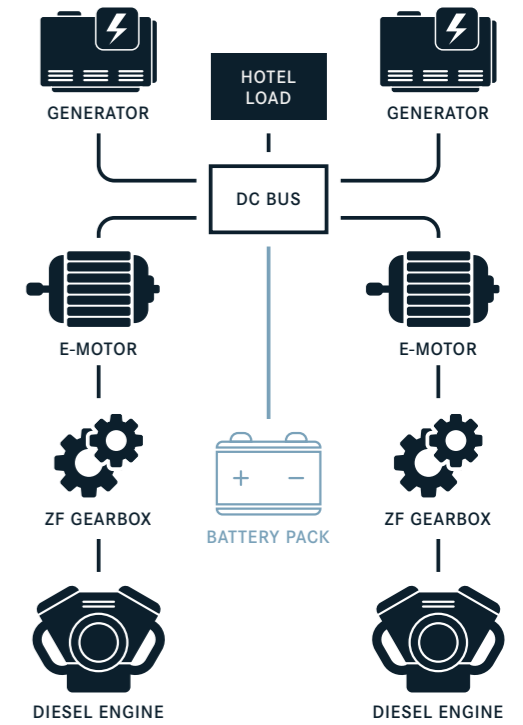
DIESEL ELECTRIC MODE



FULL ELECTRIC MODE



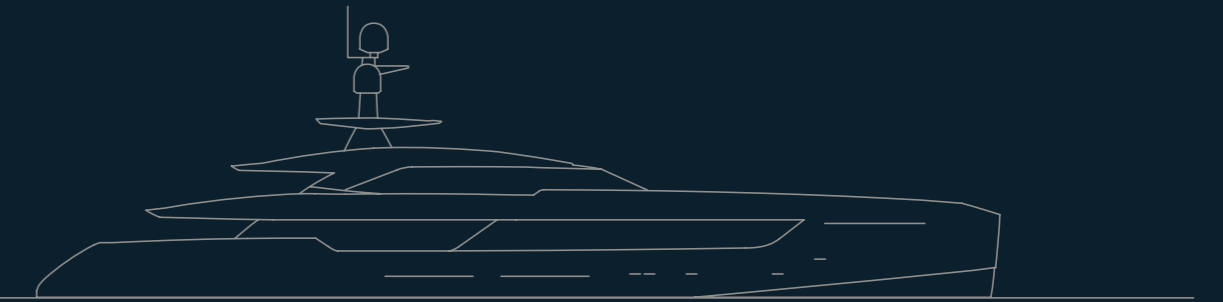
FULL SPEED MODE





Tankoa Yachts S501

# General Arrangement

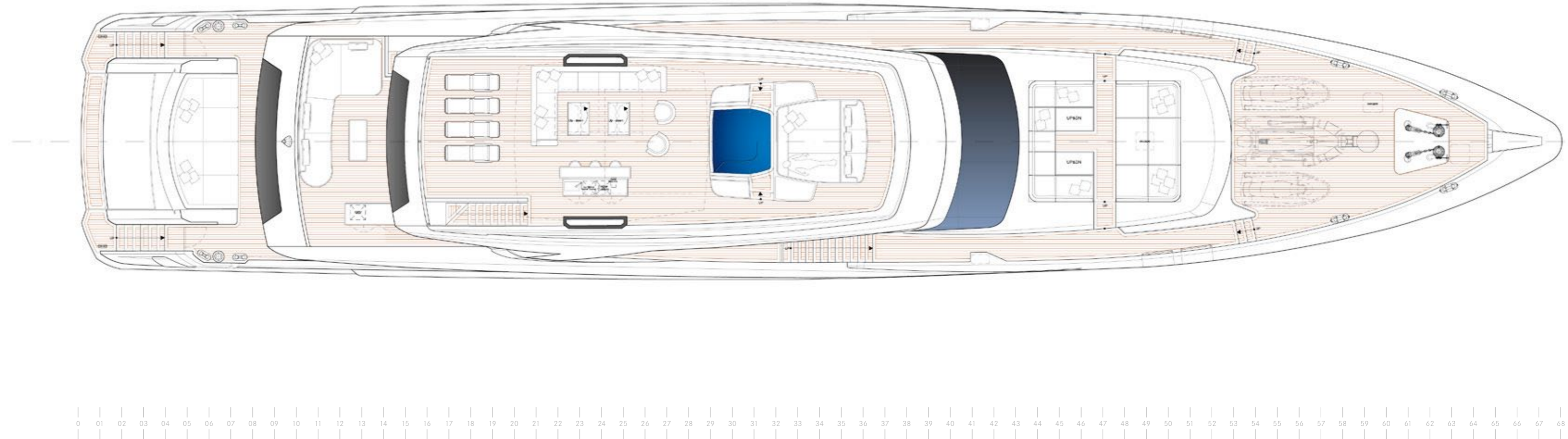








fly deck

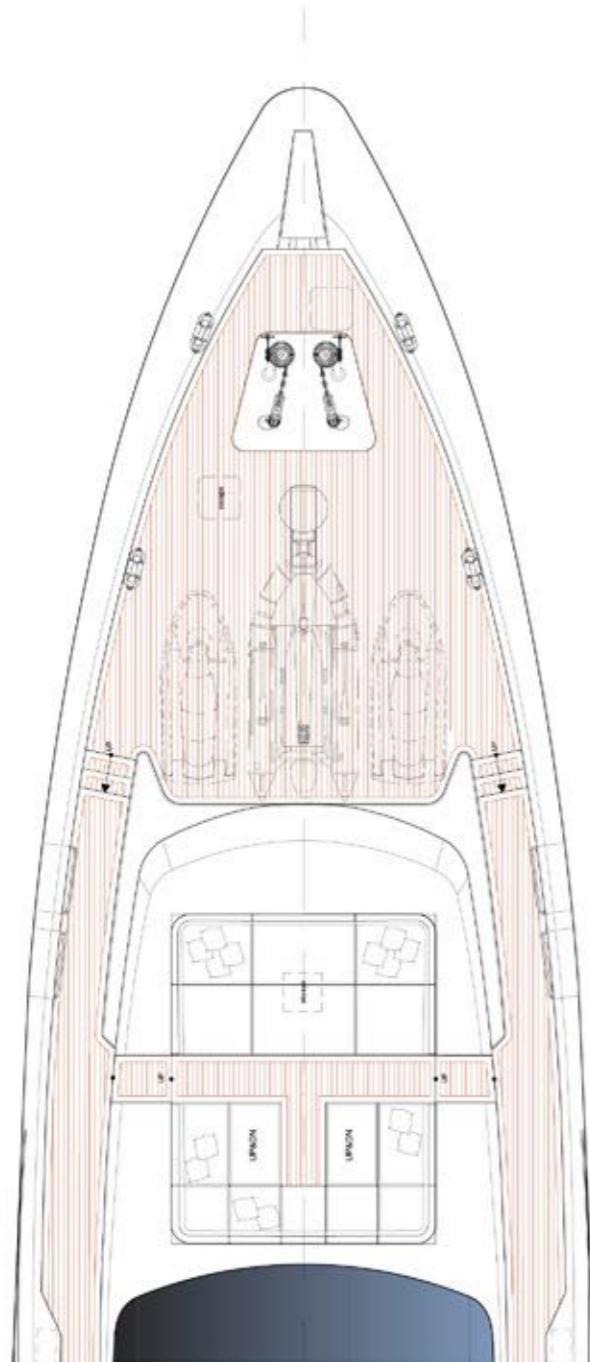




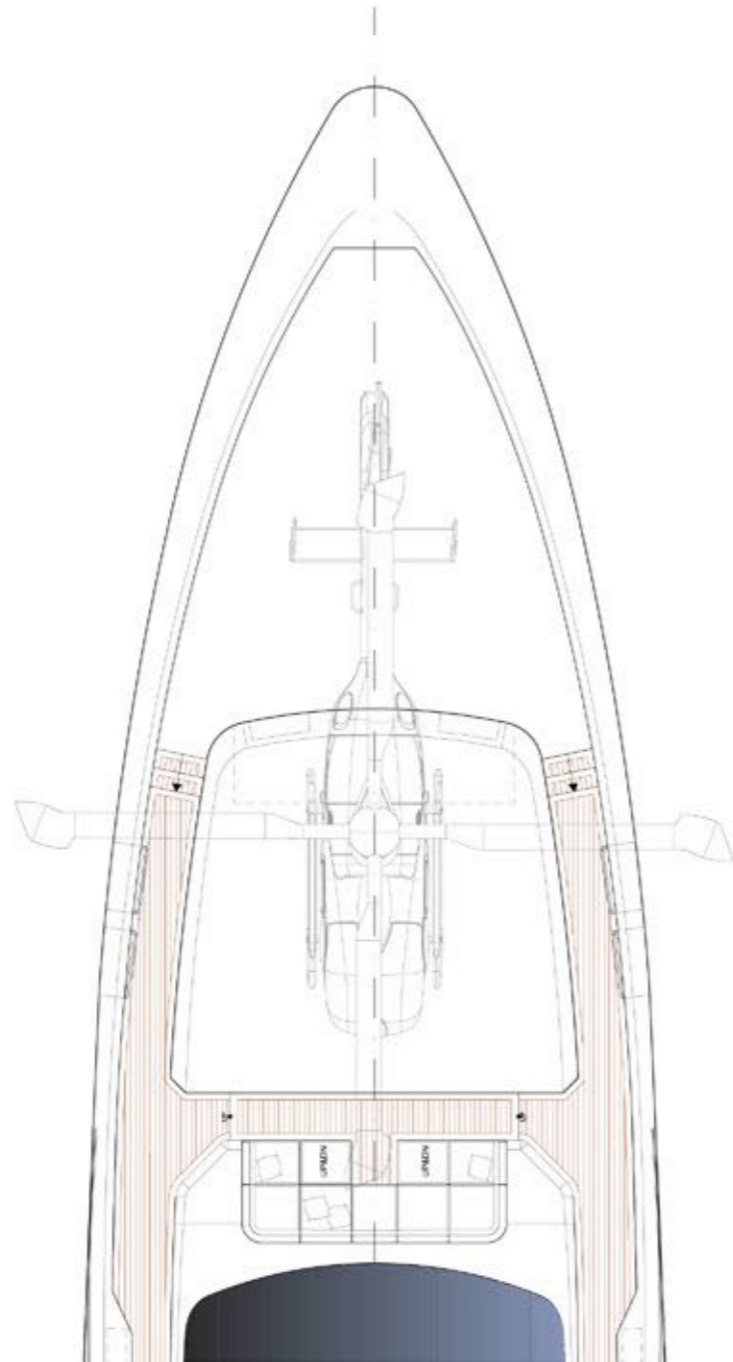




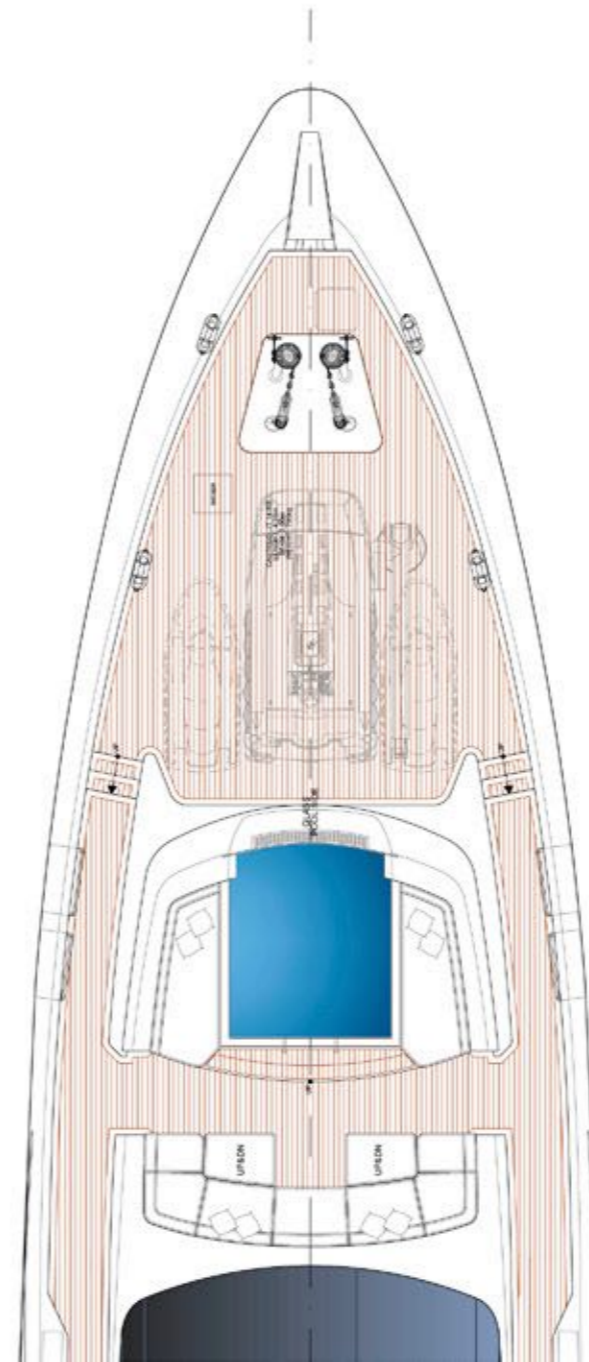
Bow lounge option



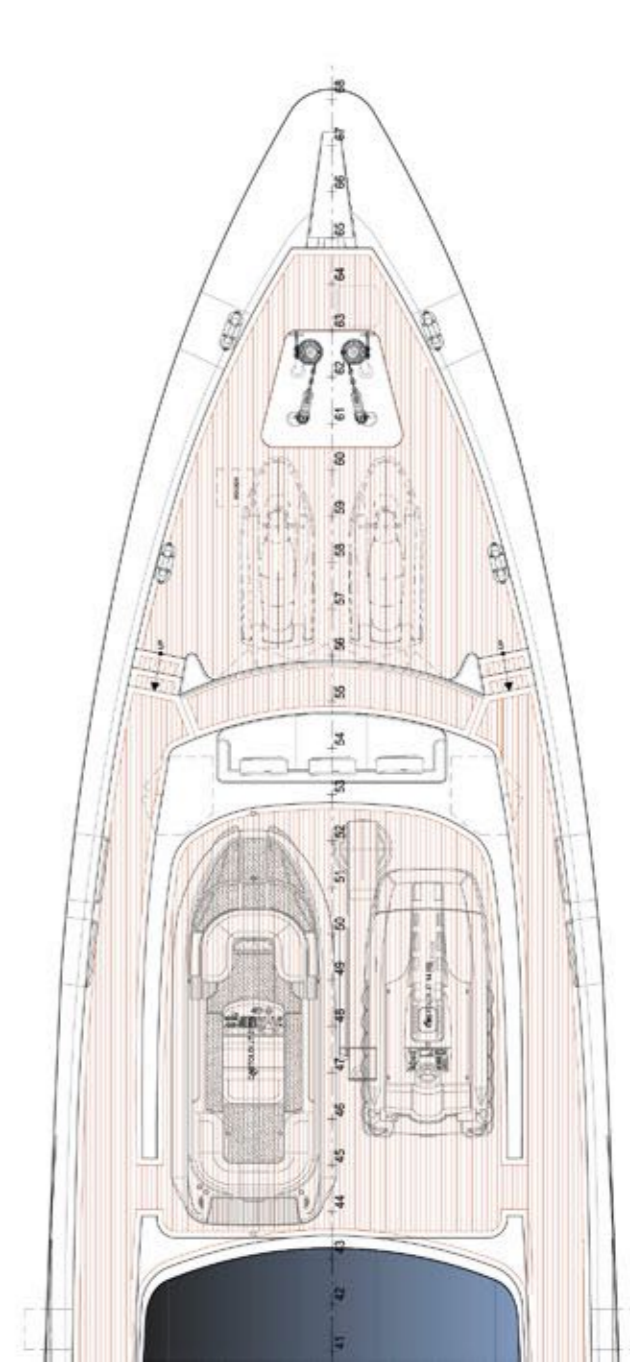
Helipad option



Pool option

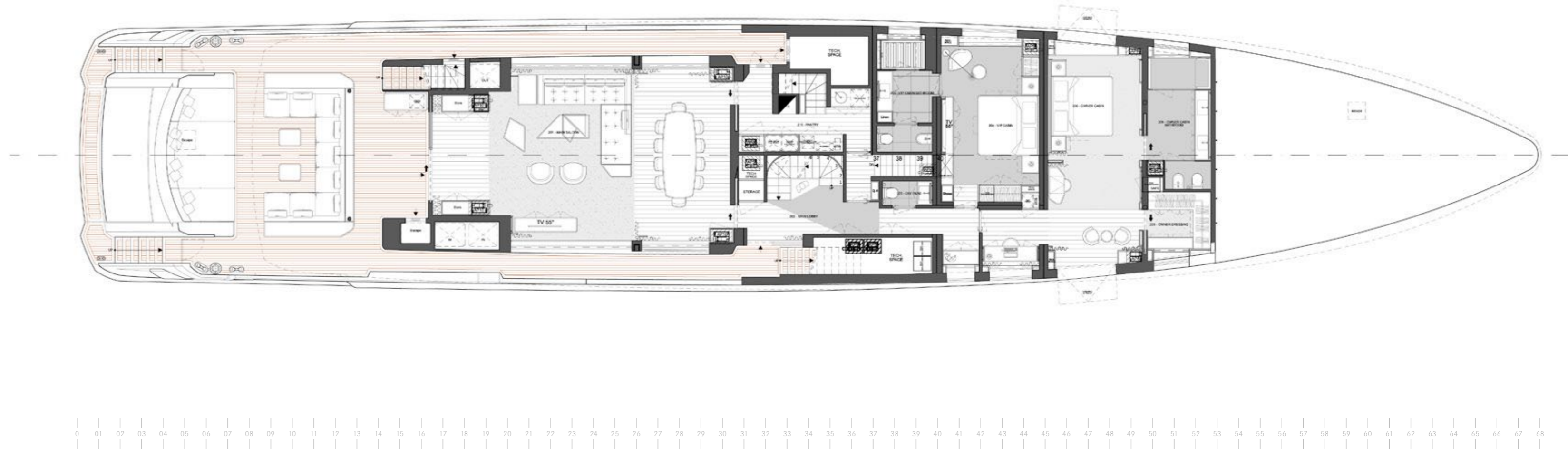


Tender Bay option





main deck





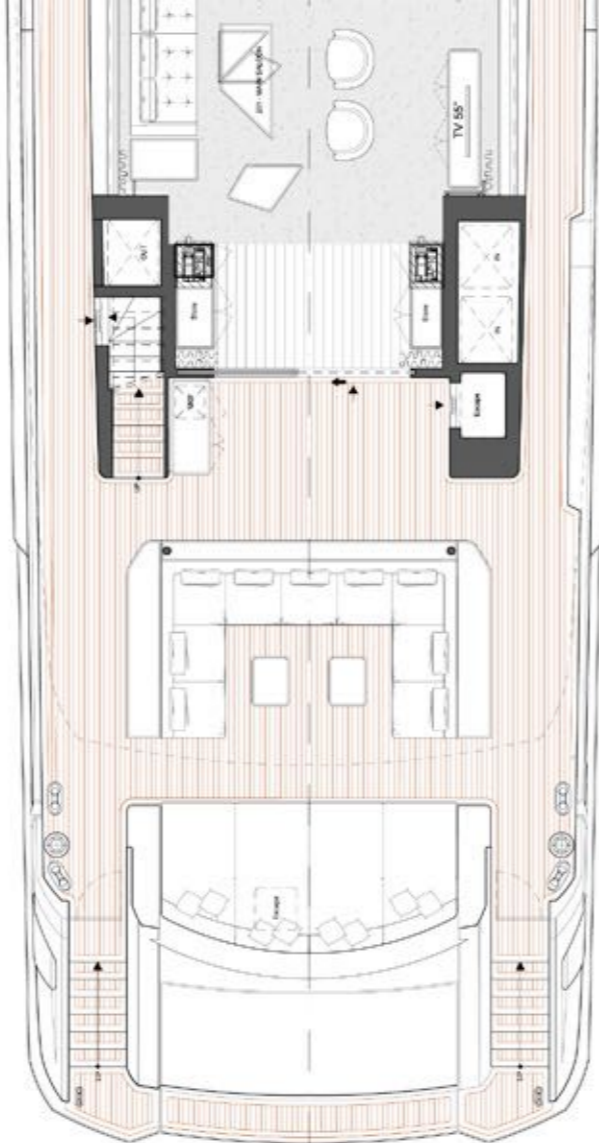
lower deck



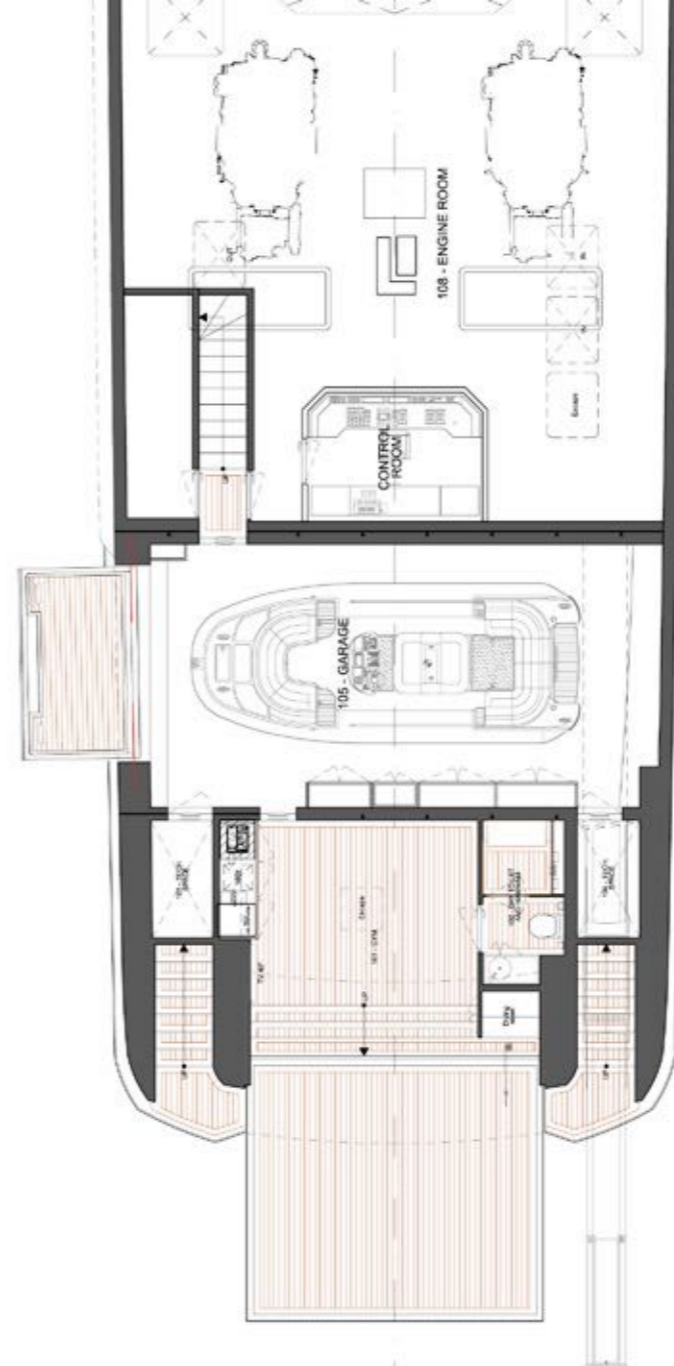
0 01 02 03 04 05 06 07 08 09 10 11 12 13 14 15 16 17 18 19 20 21 22 23 24 25 26 27 28 29 30 31 32 33 34 35 36 37 38 39 40 41 42 43 44 45 46 47 48 49 50 51 52 53 54 55 56 57 58 59 60 61 62 63 64 65 66 67 68



beach club  
STANDARD OPTION



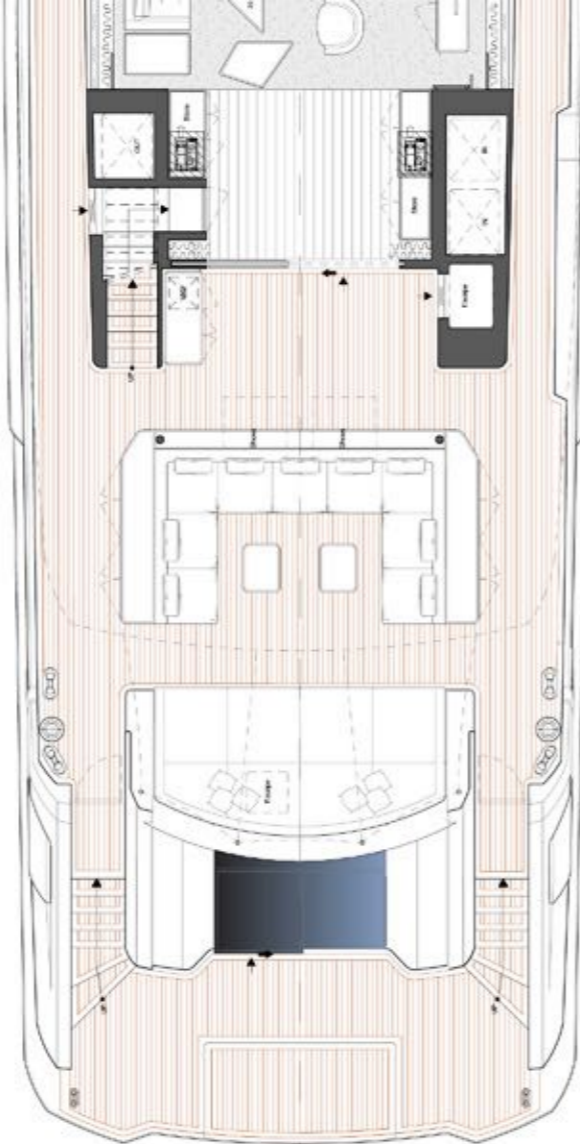
Main deck



Lower deck



beach club  
EXTENDED BEACH CLUB OPTION



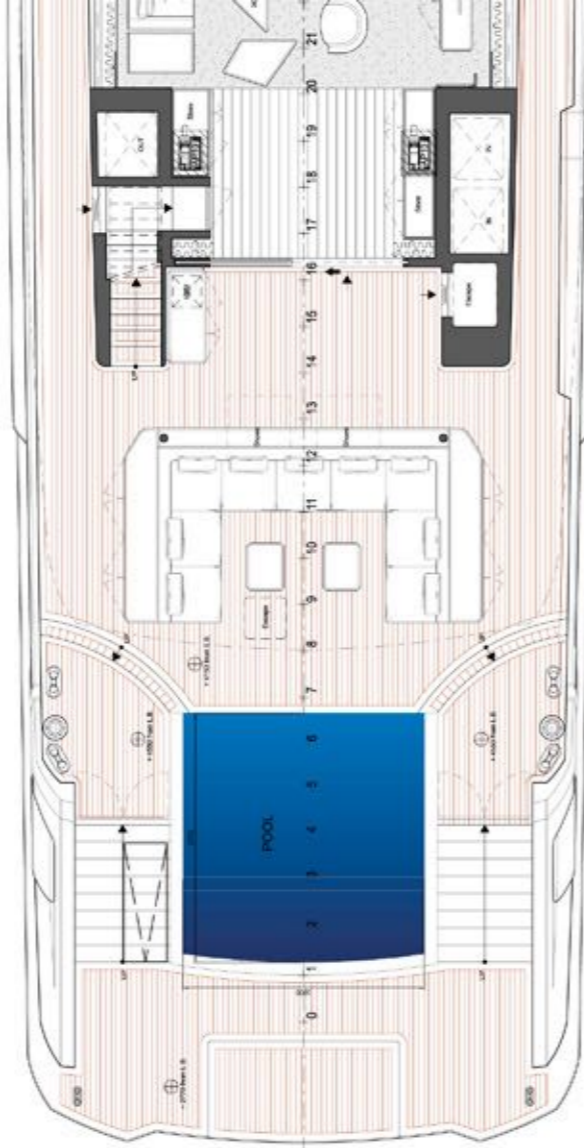
Main deck



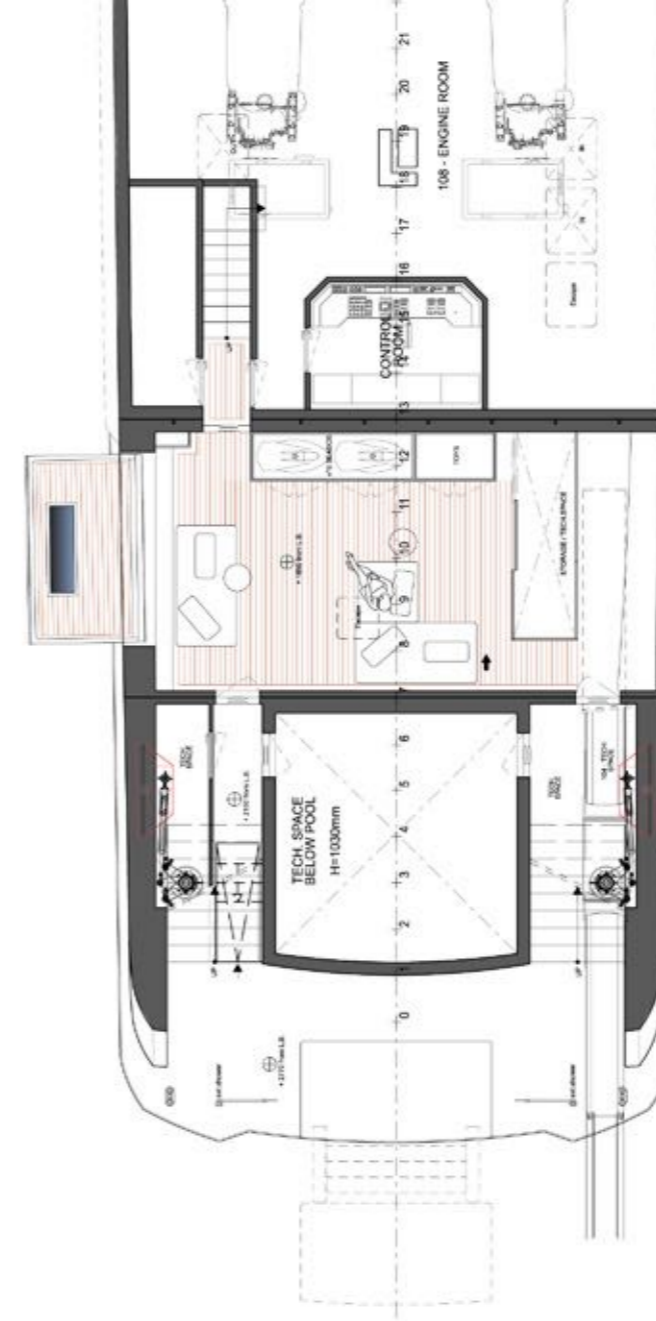
Lower deck



beach club  
AFT POOL OPTION



Main deck



Lower deck



