

S 501 / C110















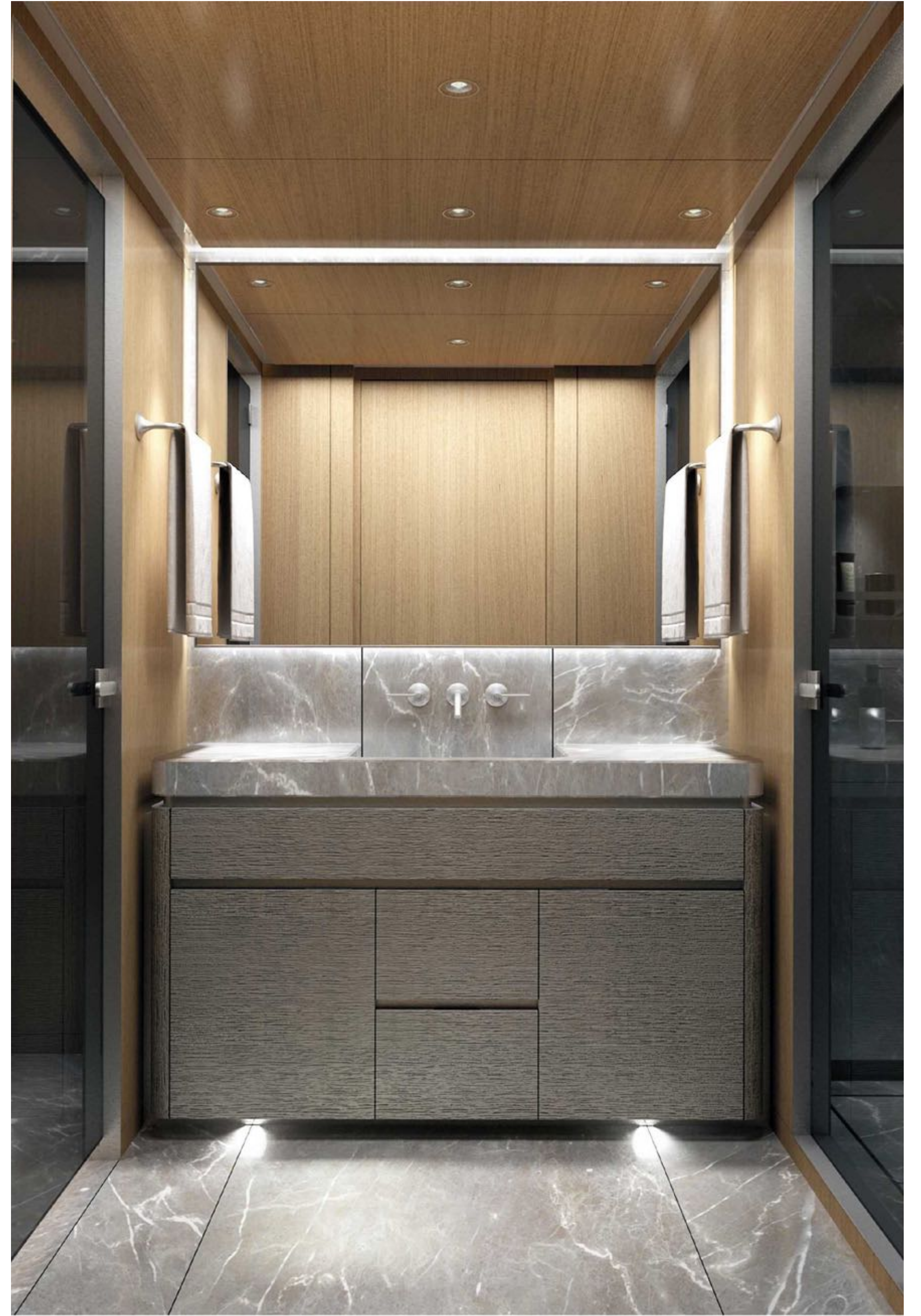






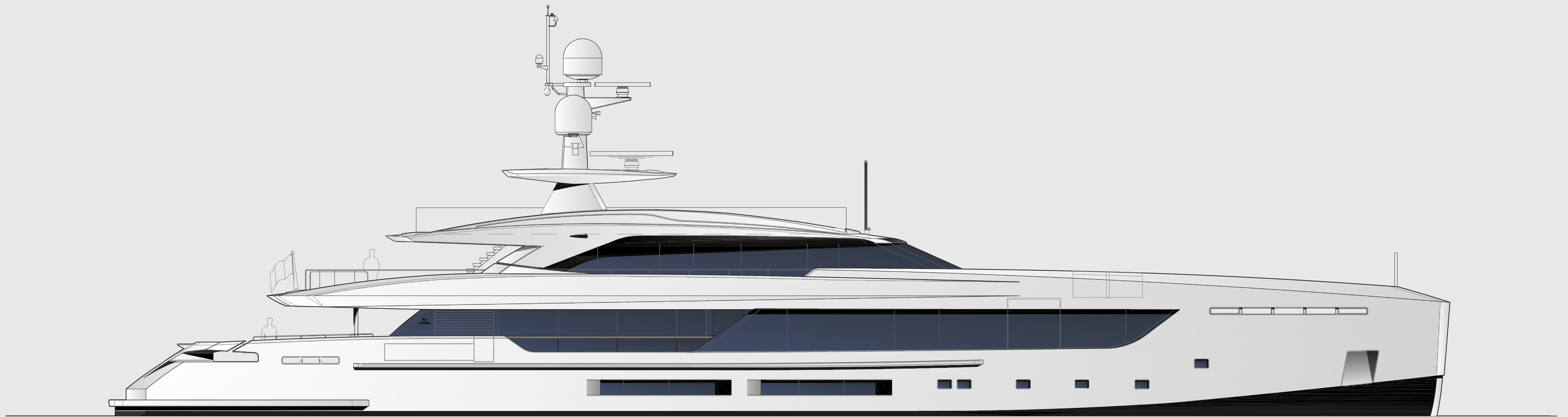






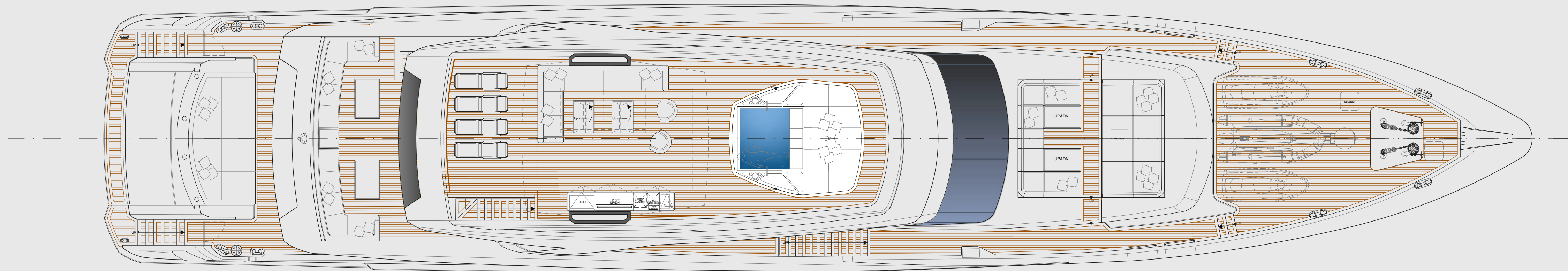






Tanko S501 - C110

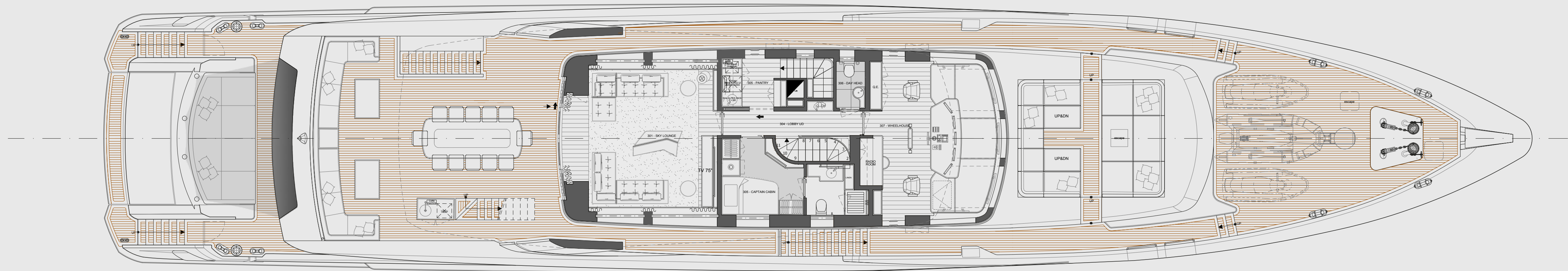


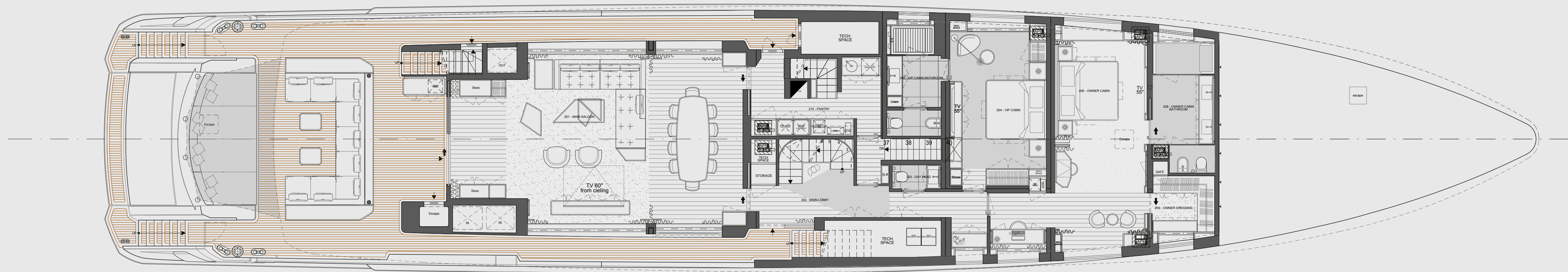


Tanko S501 - C110



Fly Deck





Tanko S501 - C110



Main Deck



Data Sheet

Tankoa S501 - C110

Lenght overall	49,80 m	Total Fresh Water (including sprinkler reserve)	approx. 16.200 It
Length between perpendiculars	49,41 m	Total Grey and Black Waters	approx. 9.800 It
Breadth (max)	9,40 m	Clean/dirty lube oil and sludge tanks	approx. 1.400/1.400/1.000 It
Depth	4,15 m	Accommodations for Owner & Guests	12 persons in 6 cabins
Draught half (underside keel)	2,32 m	Accommodations for Crew	9 persons in 5 cabins
Draught max (underside keel)	2,42 m	Max Speed at half load	17 knots
Scantling draught (from b. l.)	2,25 m	Cruising Speed at half load	15 knots
Displacement light	320 tons	Economic Speed at half load	12 knots
Displacement half load	374 tons	Range at Economic Speed	3.750 n. m.
Displacement full load	402 tons	Engines	2 x 1.193 @ 2.300 rpm - CAT C32
GRT (ITC '69)	499 GT	Generators	2 x 118 ekW @ 1.500 CAT or equivalent
Total Fuel Oil	approx. 57.300 It	Designed by	Francesco Paszkowski

THANK YOU

