

CAIPIRINHA



SPECIFICATION

**LENGTH**

60m (196.9ft)

BEAM

11.4m (37.5ft)

DRAFT

3.5m (11.5ft)

GROSS TONNAGE

1,182

BUILT

2009, Lurssen-Werft, Germany
(Refit 2017)

TYPE

Twin screw diesel yacht

CLASS

Lloyds+100A1, SSC Yacht Mono, LMC, UMS

CONSTRUCTION

Steel hull, aluminium superstructure

ENGINES 2 x Caterpillar 3512B, each 1454

kW 1979 hp **SPEED**

Cruising 12 knots, Max. 15.5 knots

ACCOMMODATION

12 guests in 6 cabins

CREW

14 in 8 cabins

EXTERIOR DESIGNER

Espen Oeino

INTERIOR DESIGNER

Mark Berryman

ASKING PRICE

US 59,900,000

LYING

DUBAI

All particulars are believed correct but cannot be guaranteed.

































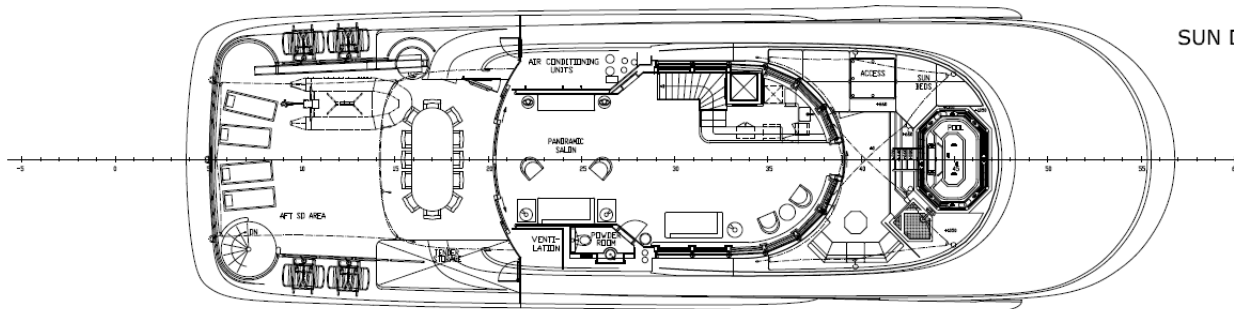
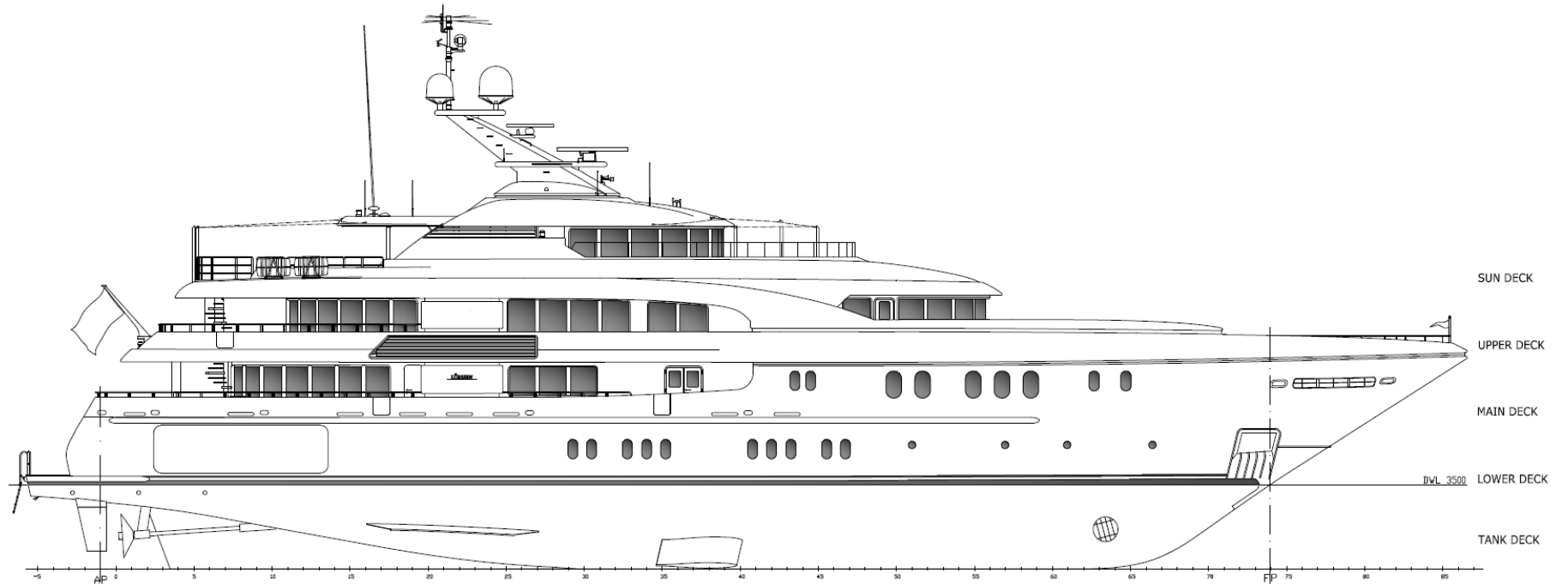




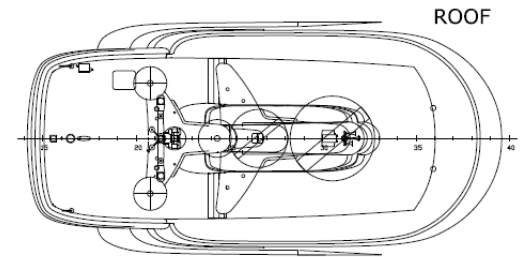




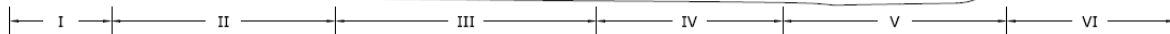
GENERAL ARRANGEMENT



SUN DECK

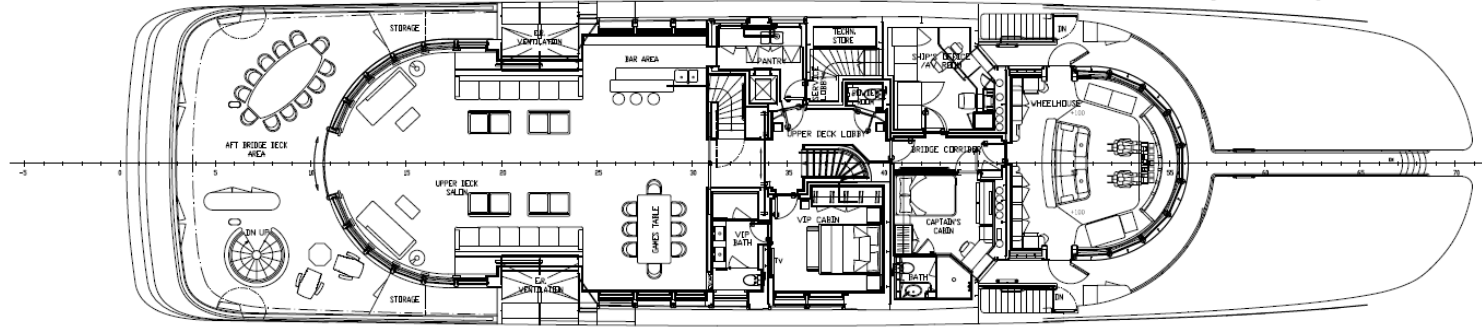


ROOF

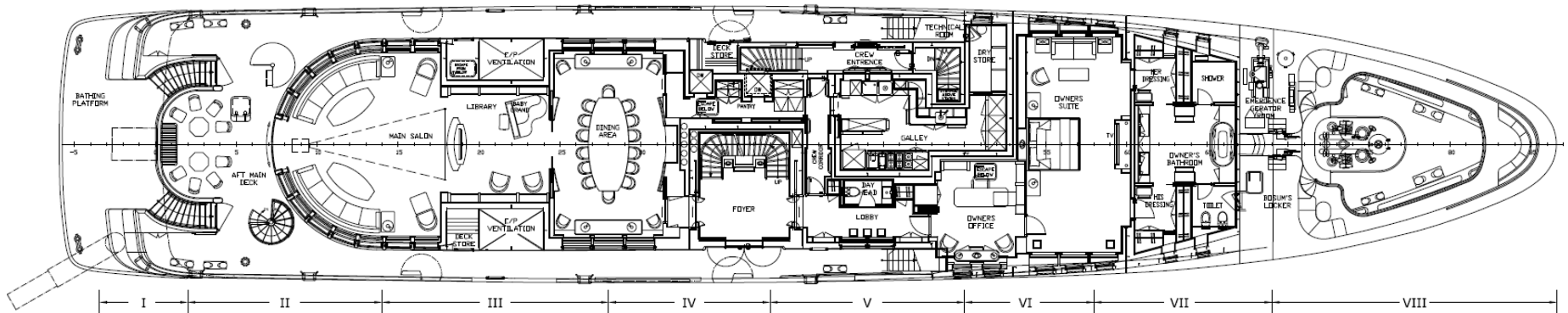


GENERAL ARRANGEMENT

UPPER DECK

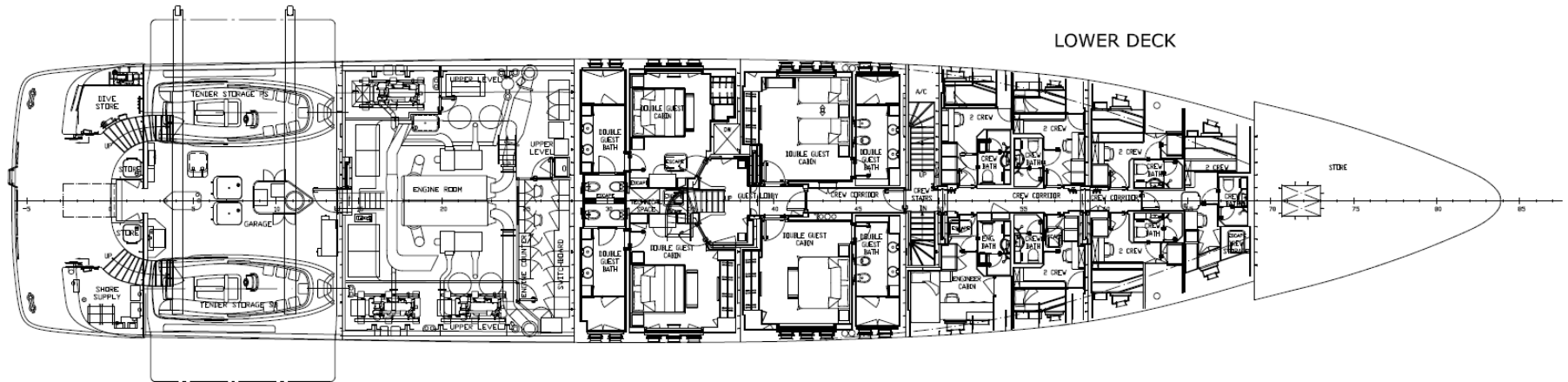


MAIN DECK



GENERAL ARRANGEMENT

LOWER DECK



TANK DECK

