

# MONEIKOS

---

62.00M (203'5") | CODECASA | 2006/2018/2020



# THE PINNACLE OF ITALIAN CRAFTSMANSHIP

---

What makes the 62m MONEIKOS special is that luxury notwithstanding she manages to emanate an intimate family atmosphere. Having only one owner and being always privately used since its delivery in 2006, MONEIKOS has been meticulously maintained throughout the years. The yacht is equipped with NAIAD DYNAMICS Zero Speed stabilisation system that reduces roll motion effect and results in a smoother and more enjoyable cruising experience.

















# WELCOME ONBOARD

The exterior of MONEIKOS, designed by Della Role, is characterised by dark strips that conceal, in the same colouring, the vast rectangular windows and punctuate the levels of the superstructure, giving it a vague ziggurat look. The need for a large volume of living area can be seen from the fact that the sundeck is about 60% covered: a solution by which the bridge and the captain's cabin are completely protected and the former is situated at the point of greatest visibility. All decks are served by a lift and by a series of judiciously placed stairways, outstanding among which is the fine spiral staircase set amidships.







MAIN DECK AFT





MAIN DECK ALFRESCO DINING AREA





SUNDECK JACUZZI





**FOREDECK DINING AREA**



# **INTERIORS**

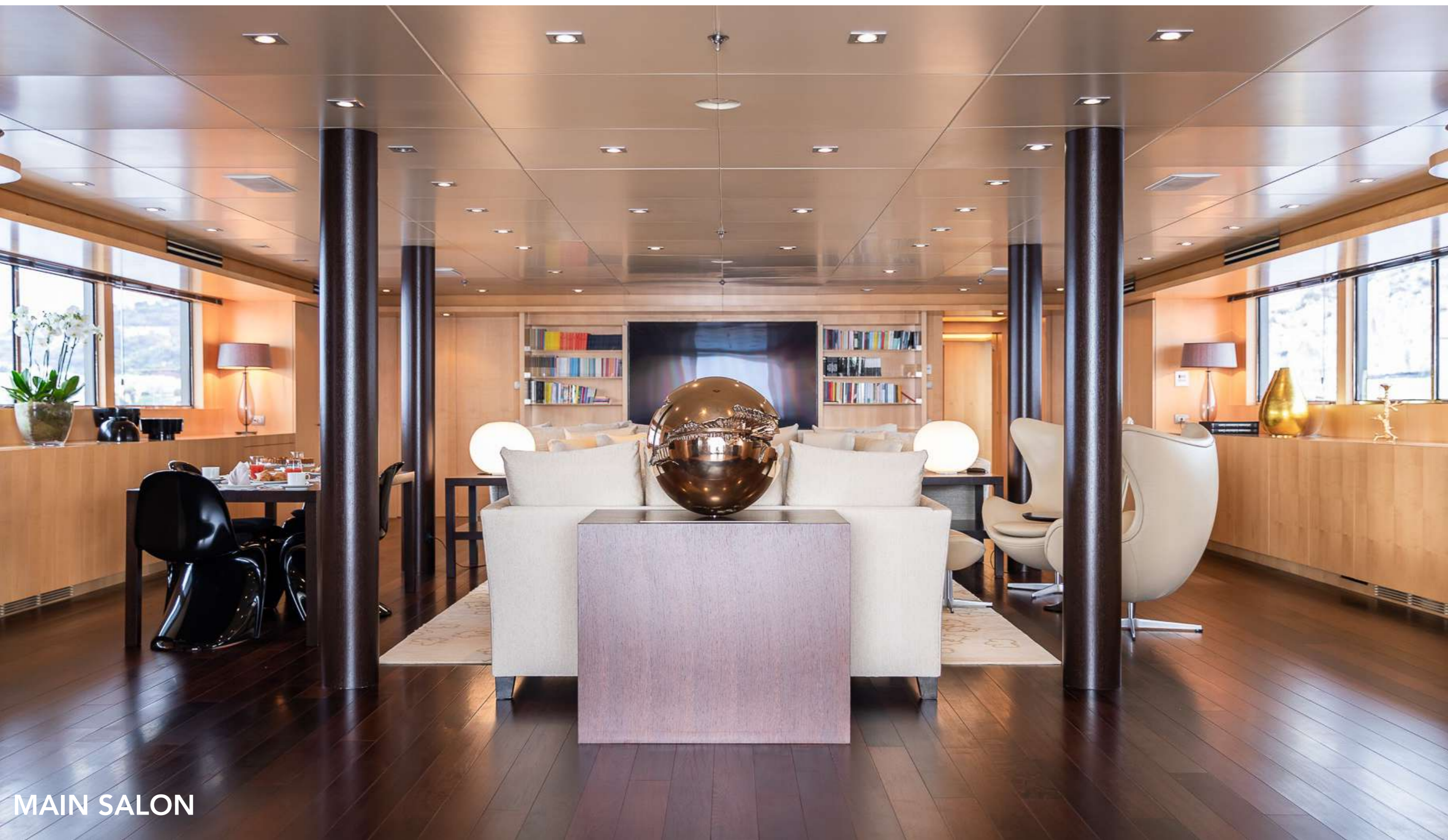
Designed by Studio Dedalo, the interior features timeless styling, beautiful furnishings and sumptuous seating creating an elegant and comfortable atmosphere. Then there are precious woods such as African wenge for the floors - dark coloured and lightly veined with yellow - and light coloured maple for the wall facings. The ceilings are hand lacquered.



MAIN SALON



We now come to the main deck, the largest and most frequented. The focal point of the great saloon, where guests are received on coming aboard, is a precious pair of semicircular sofas. Though it is luxurious and intentionally spectacular, the environment is nonetheless easygoing and youthful.







MAIN SALON





MAIN SALON





UPPER SALON





UPPER SALON





UPPER SALON





UPPER SALON

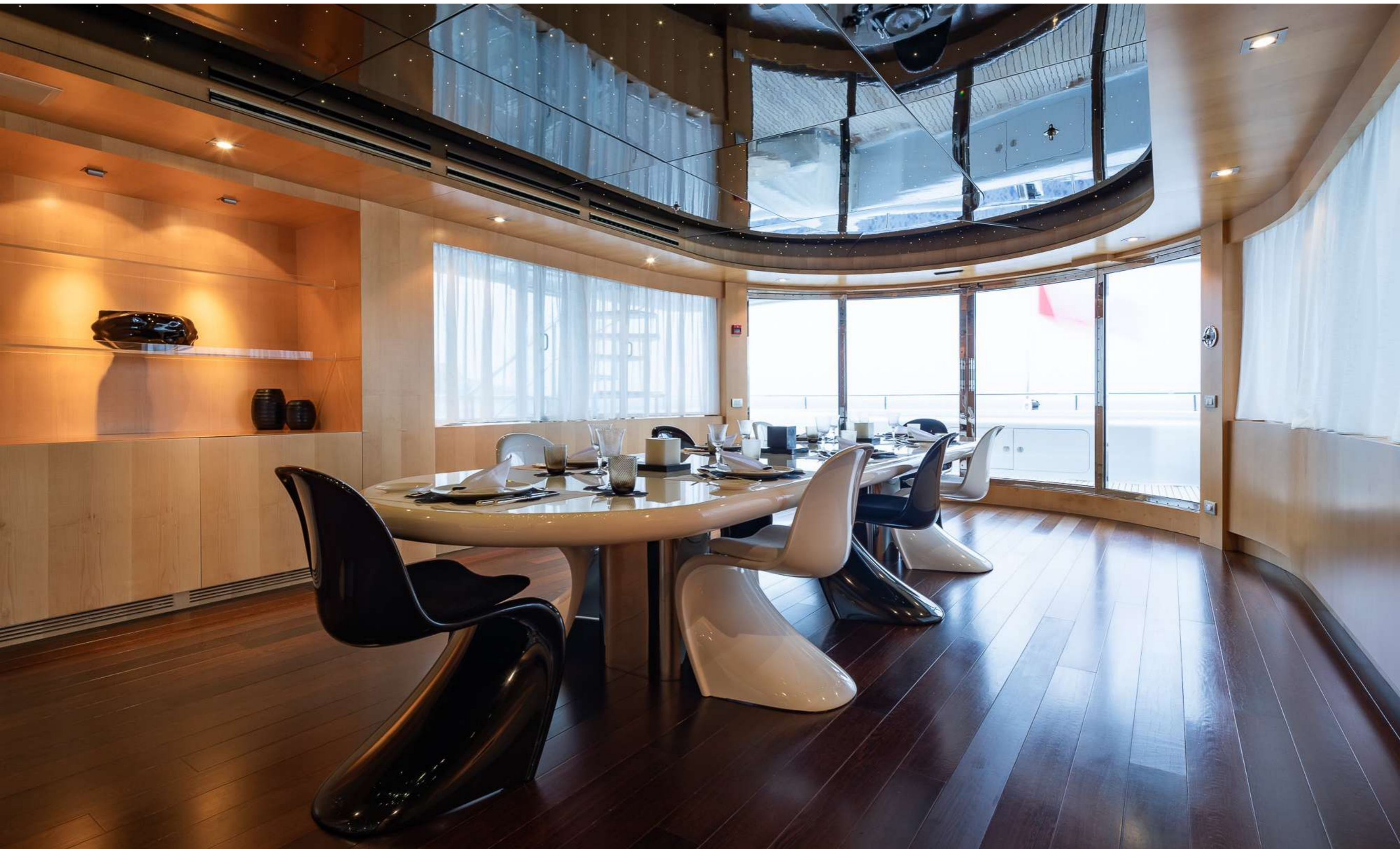




UPPER SALON



The main dining room which, sumptuous as it is (it seats sixteen), offers an atmosphere of special intimacy, evocatively conveyed also by the optic fibre micro spotlights that turn the ceiling into a starry vault.







DINING ROOM



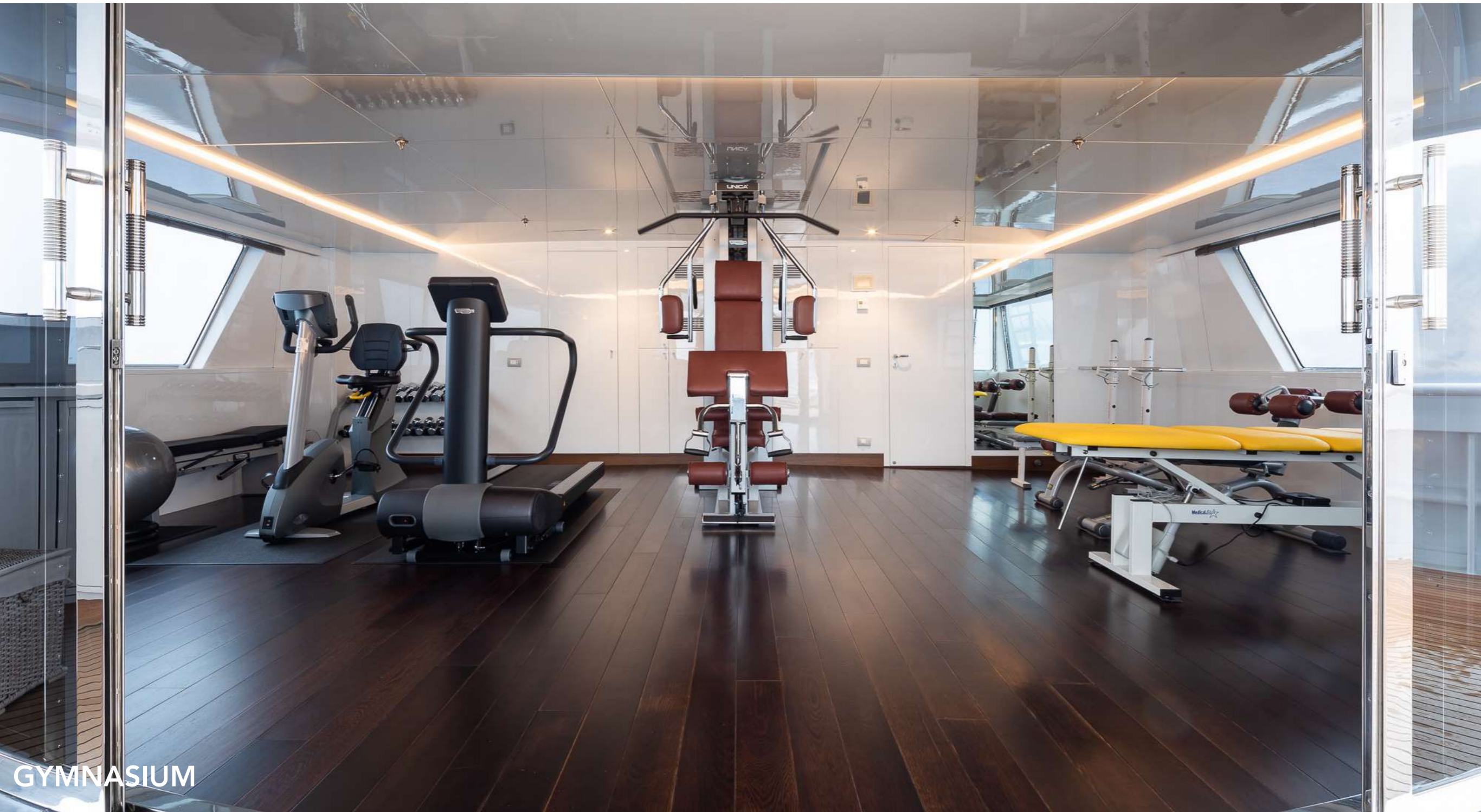


DINING ROOM



# **GYMNASIUM**

Moreover, great space was obtained for the spectacular fully-equipped air-conditioned gym on bridge deck, but without sacrificing any of the private or more prestigious areas developed on the decks below. The gym's two large sliding doors open onto the spacious sunbathing area set around a jacuzzi.









# ACCOMMODATION

MONEIKOS comfortably accommodates 16 guests in 8 staterooms. On the subject of privacy, the owner's large suite is on the upper deck, immediately beneath the sundeck, and offers spectacular 180° panoramic views. The suite has been rendered extremely functional for a family life that may, if desired, be lived fully independently of the rest of the ship.







MASTER STATEROOM





MASTER STATEROOM





**MASTER STATEROOM**



The bathrooms, rigorously one-colour, differ one from the other in the selected pastel shade, which contrasts with the precious back-lacquered glass used for the horizontal surfaces. All the ensuite have been entirely redone in 2017.



**MASTER ENSUITE**





**MASTER ENSUITE**





MASTER ENSUITE



The section on the main deck from amidships to bow is subdivided into 1 double and 2 twin guest cabins. The twin and the double cabin on main deck can be connected and converted into a full beam VIP. Most of the generous staff cabins are located on the lower deck, separated from the second guest zone which, in turn, consists of 2 double and 2 twin spacious cabins with private bathrooms.



**GUEST STATEROOM**





GUEST STATEROOM





GUEST STATEROOM





GUEST BATHROOM



GUEST STATEROOM







**GUEST BATHROOM**





PROFESSIONAL GALLEY





PROFESSIONAL GALLEY



Lower deck provides access to the technical rooms and on the aft bridge, there's a large garage housing two sophisticated Castoldi custom tenders: one 4.8-metre/16ft, the other a 7-metre/23ft craft. The engine room, technological heart of this Codecasa 62, houses a pair of 2.450 HP Caterpillar 3516Bs that give MONEIKOS a maximum speed of 17.5 knots and a cruising speed of 15, with an economical cruising speed boasts a range of no less than 6.000 miles.



ENGINE ROOM



# SPECIFICATIONS

CATEGORY:	MOTOR YACHT
LOA:	62M (203'5")
BEAM:	11.2M (36'75")
DRAFT:	3.8M (12'47")
BUILDER:	CODECASA
EXTERIOR DESIGNER:	CODECASA
INTERIOR DESIGNER:	DELLA ROLE DESIGN & STUDIO DEDALO
BUILD YEAR:	2006
REFIT:	2018/2020
HULL CONSTRUCTION:	STEEL
HULL CONFIGURATION:	DISPLACEMENT
GRT:	1,192
FLAG:	MONACO

GUESTS SLEEPING:	16 (IN PRIVATE USE)
GUEST CABINS:	8
GUEST CABIN CONFIGURATION:	1 MASTER, 3 DOUBLE, 4 TWIN
CREW:	16
CREW CABINS:	9

ENGINES:	2 X CAT 316B-HD 1825 KW
GENERATORS:	CAT C9 D1 189KW40 LITRES/HR
CRUISING SPEED:	15 KNOTS
MAXIMUM SPEED:	17.5 KNOTS
CRUISING RANGE:	6,000 NM

**ASKING PRICE:** 38,000,000 EUR (VAT PAID)



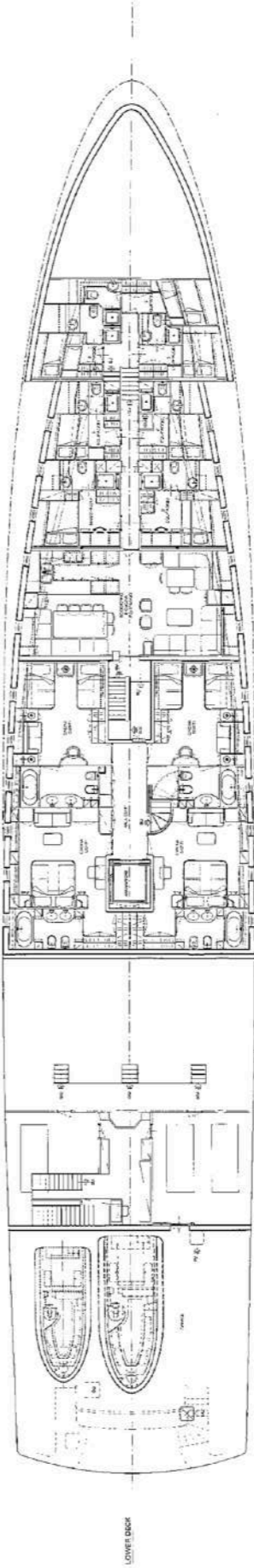
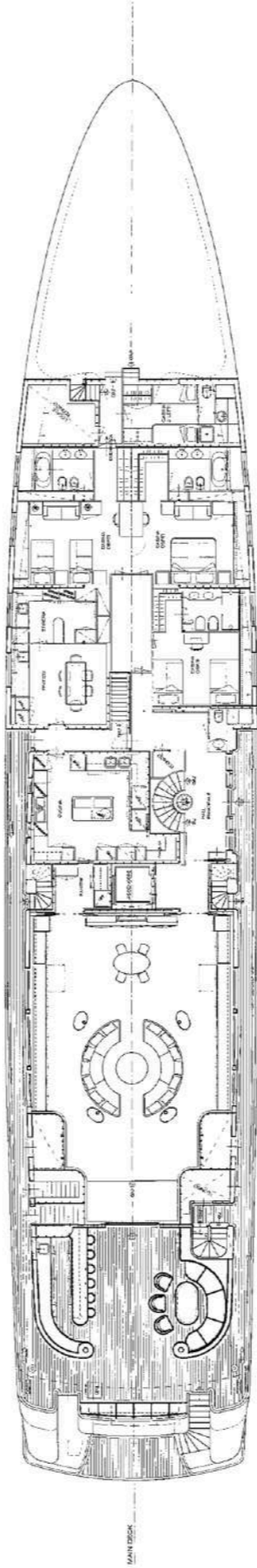
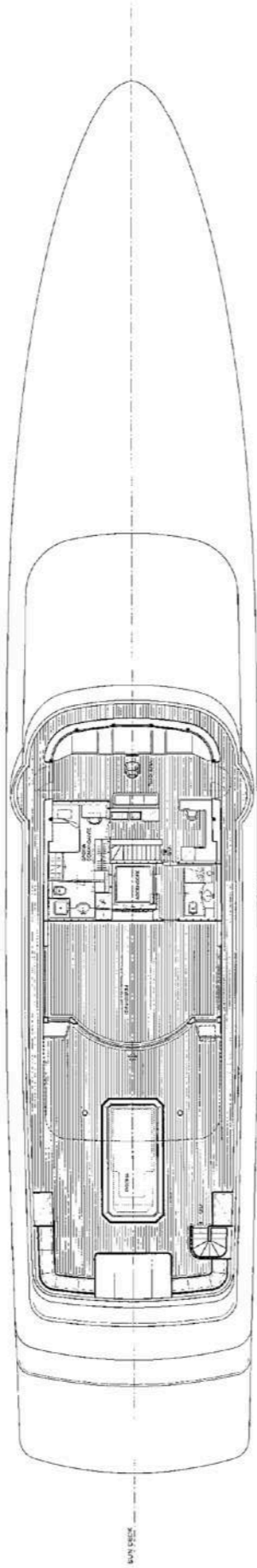
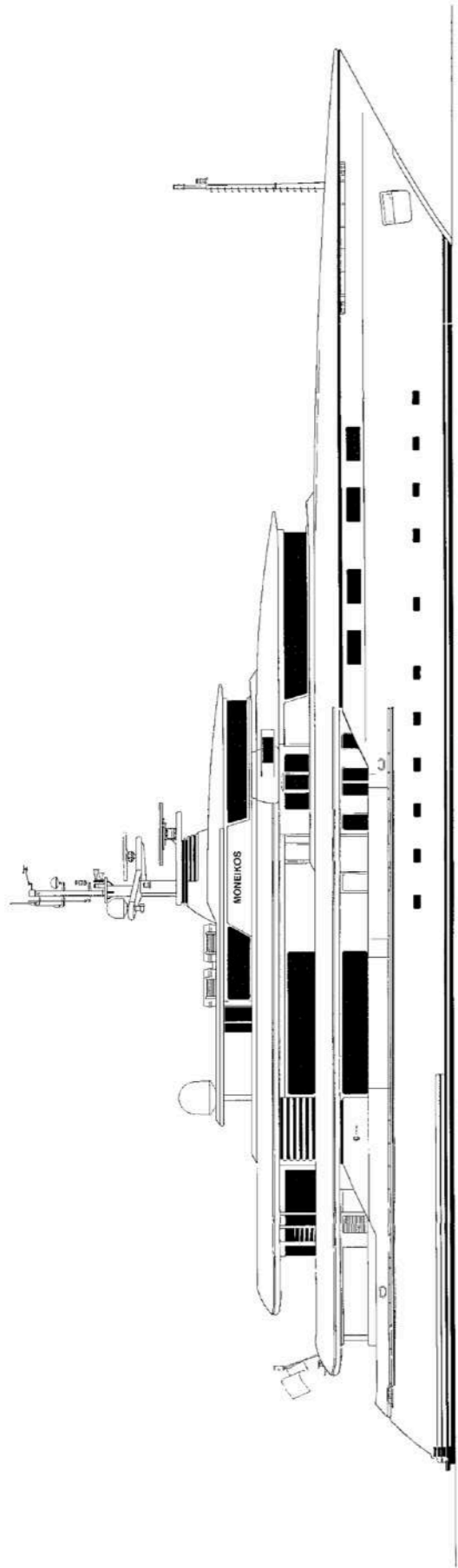


# FEATURED HIGHLIGHTS

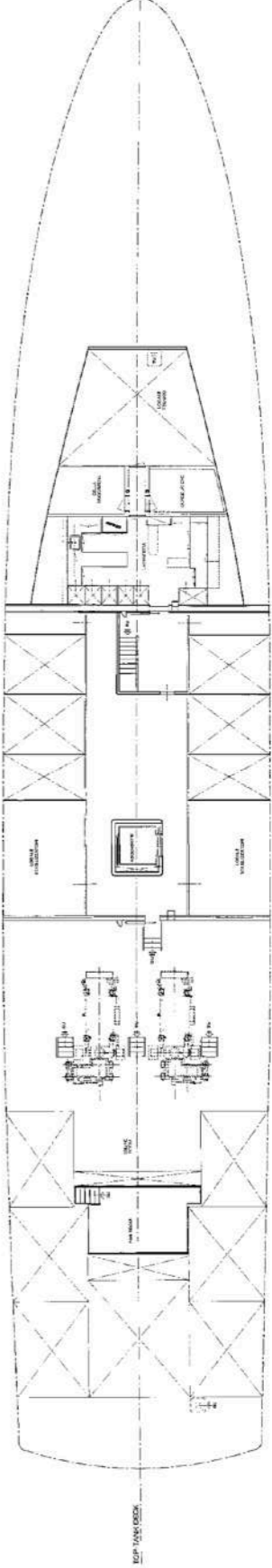
---

- ONLY ONE OWNER AND ALWAYS PRIVATELY USED SINCE BUILT
- METICULOUSLY MAINTAINED THROUGHOUT THE YEARS
- VAT PAID
- LESS THAN 4.000 HOURS ON THE ENGINES
- NAIAD DYNAMICS ZERO SPEED STABILISATION SYSTEM
- FULLY-EQUIPPED AIR-CONDITIONED GYM ON BRIDGE DECK
- 8 CABIN CONFIGURATION WITH MASTER STATEROOM ON UPPER DECK AND 180° PANORAMIC VIEW
- TIMELESS INTERIOR DESIGN FEATURING PRECIOUS WOODS SUCH AS AFRICAN WENGE AND MAPLE
- ELEVATOR THAT SERVES EVERY DECK
- VERY GENEROUS CREW MESS INCLUDING A SEPARATED GALLEY FOR THE CREW
- LARGE GARAGE WITH SPACE FOR TWO TENDERS OF 7M/23FT AND 4.8M/16FT





**RINA** UNIONE ITALIANA  
 REGISTRO NAUTICO  
**ARCHIVIATO**  
 FILED  
 Per informazioni e per informazioni  
 N. DIP. 027242  
 11/02/2007  
 RINA S.P.A.



**GENERAL ARRANGEMENT**





**MONEIKOS**

MONACO





MONEIKOS

MONACO