



Unbridled

LENGTH 191' (58.2M) **BUILDER** TRINITY **BUILD** 2009/2019
GUESTS 16 **CABINS** 6 **CREW** 14 **ASKING PRICE** \$24,950,000

OVERVIEW

LOA	191' (58.2M)	GRT	803
LWL	166' (50.6M)	Flag	Cayman Islands
Beam	35.8' (10.9M)	Cruise Speed	13.5 knots
Draft	10' (3.1M)	Max Speed	16 knots
Builder	Trinity	Exterior Designer	Trinity Yachts
Fuel	48,645 G (128,690 L)	Interior Designer	Patrick Knowles
Water	6,000 G (22,710 L)	Hull Material	Aluminium

KEY FEATURES

- ▶ Complete paint and updates to guest interior areas in 2019
- ▶ Expansive outdoor spaces including multiple lounge areas and an oversized pool for guests to enjoy
- ▶ Accommodation for up to 16 guests in six adaptable cabins
- ▶ Superbly maintained by two owners since new
- ▶ Proven world cruiser with enviable charter record

MACHINERY

MAIN ENGINES

2x Caterpillar, 3512B 1509kW (2,012hp)

ENGINE HOURS

October 2022

Port Main	14,813 hours
Stbd Main	14,771 hours

GEAR BOXES

2x Reintjes WAF 743 K31 (Gear Ratio 3.52:1)

SHAFTS & PROPELLERS

6 inch Aqualoy HS-22 with Michigan Wheel 5 blade

SPEEDS

Maximum speed	16 knots
Cruising speed	13.5 knots
Economical speed	12 knots

FUEL CONSUMPTIONS

- ▶ 882 Litres/hour at 16 knots
- ▶ 340 Litres/hour at 13.5 knots
- ▶ 241 Litres/hour at 12 knots

RANGE	5,932 nm at 12 knots
-------	----------------------

AUXILIARY MACHINERY & ELECTRICAL SYSTEM

GENERATORS	2x 230kW Kilo Pak
EMERGENCY ELECTRICITY	480V and 110V, 60hz
SHORE POWER	2x ASEA AC1003 Power Converters
BATTERIES	Main Engine and Generators CAT 24VDC
GENERATOR	99kW Kilo Pak

GENERATOR HOURS

October 2022

Port Generator	26,106 hours (full service @ 9,874 hrs)
Stbd Generator	24,076 hours (full service @ 9,6781 hrs)

TANK CAPACITIES (APPROXIMATE)

FUEL	128,690 Litres (48,645 Gallons)
WATER	22,710 Litres (6,000 Gallons)
WATERMAKERS	2x FCI 4000 US gallon per day each
LUB OIL	1,892 Litres (500 Gallons)
DIRTY LUB OIL	3,685 Litres (975 Gallons)
GREY WATER	11,994 Litres (3,160 Gallons)
BLACK WATER	2,181 Litres (577 Gallons)

COMMUNICATION EQUIPMENT GMDSS EQUIPPED & CERTIFIED

SATCOM	V-Sat – Seatel FB250 V-Sat – Seatel FB500
SSB	
RADIOTELEPHONE	Furuno FS 1570
CELLULAR SYSTEM	Tellular SX7t GSM
VHF	
RADIOTELEPHONES	2x Furuno 8800 D 3x Simrad
TELEPHONE EXCHANGE	Panasonic TDX 200
INTERCOM SYSTEM	Raymarine
WATCHKEEPING RECIEVER	Sat C GMDSS Alarm Panel

ANCILLARY EQUIPMENT

STEERING SYSTEM	EMI, Proportional Electro-Hydraulic Steering System
RUDDER ANGLE INDICATOR	Anschutz
BOW THRUSTER	Quantum QT-200 Hp
STERN THRUSTER	Quantum QT-75 Hp
STABILIZERS	2x Quantum active fin with digital controls
FUEL FILTERS	CAT & Racor Parker
FUEL SEPERATOR OIL/WATER SEPARATOR	Alfa Laval P100
FIRE/BILGE PUMP	Mahle NFV MPEB-VT
BOILERS	2x Grundfo 7.5 Hp 4x Rheem RUUD Electric Water Heater, each 99 gallons
SEWAGE TREATMENT WC's	Headhunter Tidal Wave Headhunter
AIRCON DITIONING	2x Blitzer 444000 btu/hr compressors, 45 kW heating
VENTILATION	Marine Air 5 stage 75 ton, 60kW heating

SAFETY & SECURITY EQUIPMENT

FIRE FIGHTING	Consillium Salwico CS4000
ALARMS	MX 4000
SECURITY	CCTV

NAVIGATION EQUIPMENT

MAGNETIC COMPASS	Anschutz
GYRO COMPASS	Gyrostar 22, Anschutz
AUTOMATIC PILOT LOG	Pilostar D, Anschutz B&G and Consillium
ECHO SOUNDER	Furuno FCV 1200
RADAR	X Band Furuno S Band Furuno
CHART PLOTTER	2x Transas Ecdis
GPS	2x Veica MX 420 DGPS Simrad MX612 DGPS
NAVTEX	Furuno NX-700
WIND INSTRUMENTS	B&G 3000
OTHER	2x FLIR Thermal Imaging Camera

DECK EQUIPMENT

ANCHOR WINDLASS	Muir
AFT WARPING	
CAPSTANS	Muir
GROUND TACKLE	2x Stockless anchors – 580kg each
BOAT CRANE & DAVITS	Nautical Structures
PASSERELLE	Marquipt
SIDE BOARDING LADDERS	2x Marquipt manual ladders
SEARCHLIGHT	ARC 600
AWNING	4x Sun Awnings

AUDIO/VISUAL ENTERTAINMENT SYSTEMS

MAIN SALON

- ▶ Media Décor Motorized Art Frames
- ▶ 4x B&W CCM80 speakers
- ▶ B&W FPM5 Vented Box Systems
- ▶ Arcam AVR280BLK Receiver
- ▶ Crestron CP2E Control Processor
- ▶ Crestron TPMC8X Touch panel
- ▶ Crestron TPMC8XDSW Docking Station
- ▶ iPad Crestron AV App
- ▶ 2x Sunfire Subwoofers
- ▶ Crestron Room Media Controller
- ▶ CNXRMCLV Control System
- ▶ Zantech CB18 Phoenix Connector
- ▶ 3x Crestron Light Switch Keypad

DINING ROOM

- ▶ 2x B&W Ceiling Speakers
- ▶ Crestron Touch panel
- ▶ 3x Crestron Light Switch Keypad
- ▶ Crestron Docking Station
- ▶ iPad Crestron AV App
- ▶ Auxiliary Port

FOYER

- ▶ B&W Speakers
- ▶ 2x Linn Sweetspot Speakers
- ▶ Crestron Touch panel
- ▶ 2x Crestron Keypad

GYM

- ▶ B&W Ceiling Speakers
- ▶ NAD DVD Player
- ▶ Sherbourn Amplifier
- ▶ Sunfire Subwoofer
- ▶ Crestron Docking Station
- ▶ 4x Crestron Keypads
- ▶ B&W Ceiling Speaker
- ▶ Crestron Keypad (Bathroom)

HIS OFFICE

- ▶ 42 inch NEC Plasma
- ▶ 2x B&W Speakers
- ▶ Sherbourn Amplifier
- ▶ Sunfire Subwoofer
- ▶ Crestron Touch panel
- ▶ iPad – Crestron AV App
- ▶ 3x Crestron Light Switch Keypad

HER OFFICE

- ▶ 2x B&W Speakers
- ▶ Sherbourn Amplifier
- ▶ Sunfire Subwoofer (1) iPad – Crestron AV App

MASTER STATEROOM

- ▶ Auxiliary Ports
- ▶ 4x B&W Speakers
- ▶ B&W Ceiling Speaker (Bathroom)
- ▶ 4x Sonace Symphony
- ▶ 20 inch Sharp Monitor
- ▶ iPad Mini Crestron Av App
- ▶ 4x Crestron Light Switch Keypad

PILOT HOUSE

- ▶ 2x B&W CCM65 Ceiling Speakers
- ▶ Sherbourn LDS2/75 Amplifier
- ▶ VST Receiver
- ▶ 5x Crestron Light Switch Keypads
- ▶ 2x Crestron Touch panels
- ▶ Sonace Table Top iPod
- ▶ Auxiliary Ports

SKYLOUNGE

- ▶ Media Décor Motorized Art Frames
- ▶ 2x Sunfire Subwoofers
- ▶ 4x Crestron Light Switch Keypads
- ▶ Cisco Wireless Access Point
- ▶ Auxiliary Ports
- ▶ iPad Crestron AV App
- ▶ iPad Mini Crestron AV App

GUEST STUDY

- ▶ Crestron Processor
- ▶ NAD DVD Player
- ▶ Sunfire Subwoofer
- ▶ Crestron Light Switch Keypad
- ▶ 42 inch NEC Plasma
- ▶ 3x Quantum LCR Speakers
- ▶ iPad Crestron AV App
- ▶ iPad Docking Station

VIP GUEST PORT

- ▶ 32 inch NEC Plasma
- ▶ Crestron Light Switch Keypad
- ▶ iPad Crestron AV App
- ▶ iPad Docking Station
- ▶ Linn Sweetspot Speakers
- ▶ NAD DVD Player

VIP GUEST STARBOARD

- ▶ 32 inch NEC Plasma
- ▶ Crestron Light Switch Keypad
- ▶ iPad Crestron AV App
- ▶ iPad Docking Station
- ▶ Linn Sweetspot Speakers
- ▶ NAD DVD Player

GUEST TWIN PORT

- ▶ 32 inch NEC Plasma
- ▶ NAD DVD Player
- ▶ iPad Crestron AV App
- ▶ iPad Docking Station
- ▶ Sherbourn Amplifier
- ▶ 2x Speakercraft Flush Mount Speakers

GUEST TWIN STARBOARD

- ▶ 32 inch NEC Plasma
- ▶ NAD DVD Player
- ▶ iPad Crestron AV App
- ▶ iPad Docking Station
- ▶ Sherbourn Amplifier
- ▶ Speakercraft Flush Mount Speakers

LOWER HALL

- ▶ 2x Speakercraft (1) NAD DVD Player
- ▶ 4x Crestron Light Switch Keypads
- ▶ 2x Speakercraft Flush Mounted Speakers

GALLEY

- ▶ 2x B&W Speakers
- ▶ 2x Crestron Light Switch Keypads
- ▶ VST Car Stereo
- ▶ 20 inch Sharp LCD Monitor
- ▶ Crestron Touch Panel

CREW LOUNGE

- ▶ Crestron Processor
- ▶ NAD DVD Player
- ▶ Velodyne Subwoofer
- ▶ 5x Speakercraft Speakers
- ▶ iPad – Crestron AV App
- ▶ iPad Docking Station
- ▶ 32 inch Runco Monitor
- ▶ Cisco Wireless Access Point

CAPTAIN'S CABIN

- ▶ NAD DVD Player
- ▶ 2x Speakercraft Speakers
- ▶ Crestron Touch Panel
- ▶ Crestron Docking Station
- ▶ Crestron Light Switch Keypad
- ▶ Liberty Panel Crafters Custom Decora Style Insert
- ▶ 32 inch LCD Monitor

CREW CABINS (4)

- ▶ Info Display Integration TV/DVD System per berth
- ▶ 2x Speakercraft 6 inch Round Speakers
- ▶ VST receiver
- ▶ VST DVD Player
- ▶ 2x VST Wireless Headphones
- ▶ AV Toolbox Amp
- ▶ Liberty Panel Crafters Custom Decora Style Insert

LAZARETTE/DIVE ROOM

- ▶ 1x JL Audio Marine Subwoofers
- ▶ 4x JL Audio Marine Speakers
- ▶ Creston Waterproof Handheld Remote
- ▶ Crestron Wall Mount Touch panel
- ▶ Crestron Touch panel

SUNDECK

- ▶ Crestron Touch panel
- ▶ Crestron Docking Station
- ▶ Crestron Waterproof Handheld Remote
- ▶ JL Audio Speakers
- ▶ Runco 42 inch Monitor
- ▶ iPad – Crestron AV App

UPPER DECK AFT

- ▶ Crestron Touchscreen
- ▶ Crestron Keypads
- ▶ Crestron Touch panel
- ▶ 2 Way RF Receivers
- ▶ 4x JL Audio Marine Speakers
- ▶ 6x JL Audio Speakers
- ▶ 2x JL Audio Subwoofers
- ▶ Cisco Wireless Access Point
- ▶ PORTUGUESE BRIDGE JL Audio Marine Subwoofers
- ▶ 4x JL Audio Marine Speakers

OFFICE EQUIPMENT

–

COMPUTERS

- ▶ Mini mac with 27 inch monitor
- ▶ OptiPlex 760 PC with HP2195 monitors
- ▶ Apple PC with pair of apple monitors

PHOTOCOPIER/PRINTER

- ▶ Cannon MX 7600 (all in one)
- ▶ 3x HP Office Jet Pro 8600 Pro Plus (all in one)

DOMESTIC EQUIPMENT

–

MAIN GALLEY

- 2x Gaggenau Electric Ovens
- ▶ Gaggenau Hot Plate
- ▶ Kitchen Aid Ice Machine
- ▶ Vulcan Electric Salamander
- ▶ Electrolux Dishwasher
- ▶ Sharp Microwave
- ▶ Keurig Machine
- ▶ Nespresso Machine

LAUNDRY

- ▶ 3x Miele Touchtronic T 1415 Dryers
- ▶ 3x Miele Touchtronic W1215 Washers

OTHER EQUIPMENT

–

JACUZZI DIP POOL

- ▶ Bradfords Custom Tile 8 Person

SHIP'S SAFES

- ▶ 1x Master Cabin Hayman Electronic
- ▶ Challenger Electronic
- ▶ Captain Cabin Dial Lock

BARBEQUE

- ▶ Viking Professional 2burner BBQ

GYM EQUIPMENT

- ▶ Woodway Treadmill
- ▶ Cybex Elliptical Trainer
- ▶ Bowflex bench + Free weights
- ▶ Les Mills V-BK Exercise Bike

TENDERS & WATERSPORTS EQUIPMENT

—

TENDERS

- ▶ 42' HCB with 4 engines
- ▶ 32' Vanquish Tender
- ▶ 28' Zodiac Hurricane H853 Tender

WATERSPORTS

- ▶ 2x Kayaks
- ▶ Canoe
- ▶ 3x Stand-up paddle boards
- ▶ 2x SEADOO jet skies
- ▶ 3x Sea Bobs
- ▶ Snorkel gear
- ▶ Fishing equipment
- ▶ Variety of Water toys
- ▶ Beach setups with BBQ

▶

ACCOMMODATION

—

Accommodation for up to 16 guests in six adaptable cabins, and up to 14 crew in six crew cabins, as follows:

OWNER

Full beam owner's suite, located forward on the main deck with en suite. Private study located aft of cabin

GUESTS

- ▶ 2x Double VIP cabins with queen bed and en suite bathroom located on lower deck.
- ▶ 2x Twin cabins, each have with a double bed, single bed & Pullman berth.
- ▶ Both have an en suite bathroom and are located on lower deck.
- ▶ Dedicated guest office on lower deck
- ▶ Additional cabin with en suite bathroom, located on main deck aft of master cabin. Option of a double Murphy bed or 2x pullman berths.

CREW

- ▶ Captain's cabin
- ▶ Engineer's cabin
- ▶ 2x Two-berth cabins
- ▶ 2x Three-berth cabins

▶

WORKS LIST

—

2019

- ▶ Complete paint job

Main Salon/Dining Salon

- ▶ New overheads installed
- ▶ Main salon aft worktops resurfaced
- ▶ Marble floor put down aft of main salon
- ▶ New stone (marble) installed on outer shelves of main salon and dining
- ▶ New furniture and soft goods throughout
- ▶ New TV installed
- ▶ New wallcovering in main salon and dining
- ▶ New wool and dull silk carpets installed in main salon and dining area
- ▶ Various artwork and ornaments replaced
- ▶ AV system has been updated and some new iPads

MAIN DECK CORRIDOR

- ▶ New marble flooring as well as new artwork installed

MASTER STATEROOM

- ▶ New overheads installed made Vinyl
- ▶ Master office leather floor has been taken up and carpets have been put down
- ▶ throughout the offices and master stateroom
- ▶ New furniture and soft goods in master stateroom and study
- ▶ TV replaced in Master office, AV system updated and trim around TV replaced
- ▶ Artwork/ornaments updated
- ▶ New master stateroom chandelier installed with various glass slates and new wall
- ▶ sconces installed around master cabin

GYM

- ▶ New overheads installed made from Vinyl
- ▶ New carpet installed matching the master cabin
- ▶ New drapes installed
- ▶ New wall Panels installed in room
- ▶ New glass panels installed in gym shower and new faucets being installed on sink

SKYLounge

- ▶ New overheads installed
- ▶ New carpet has been installed
- ▶ New skylounge bar top has been installed
- ▶ Sconces replaced throughout the skylounge
- ▶ LED strip lights updated and added in areas of the skylounge
- ▶ New furniture and soft goods
- ▶ Wooden walls in skylounge have now been replaced with white wallcovering
- ▶ 2 brand new TVs installed
- ▶ Various nesting updated inside cupboards to accommodate new glassware
- ▶ New decorative pillows and cashmere blankets for skylounge as well as updated artwork around the room

SKYLOUNGE DAYHEAD AND STAIRCASES

- ▶ New Vinyl overheads in skylounge dayhead
- ▶ Skylounge dayhead floor has been replaced with marble, sink worktop replaced with marble and new faucets installed around the sink area
- ▶ Stair Wall Panel Fabric installed (whisper walls)
- ▶ Skylounge leather railing installed made from 100% leather
- ▶ Carpet installed on both guest staircases

GUEST STATEROOMS

- ▶ New carpets installed in all lower guest staterooms
- ▶ Each bedroom has new headboard panels
- ▶ New shelving panels installed
- ▶ New blinds installed, roman shades
- ▶ New decorative pillows, cashmere blankets, ornaments, and artwork through guest staterooms
- ▶ New bed linen updated throughout each guest cabin
- ▶ Updated AV system in all cabins
- ▶ New wall covering installed in each guest stateroom bathroom
- ▶ All faucets replaced with new ones in each guest stateroom

GUEST STUDY

- ▶ Various new furniture
- ▶ New carpet installed
- ▶ Brand new TV installed in study with new wall panels
- ▶ AV updated in study
- ▶ New speakers replaced in study

2019 - ENGINEER REFIT LIST**HULL**

- ▶ zinc anodes Inspected and replaced

FRESH WATER SYSTEM

- ▶ Replaced all four Domestic Boilers

TANKS

- ▶ Inspected and cleaned

VENTILATION

- ▶ Engine Room Ventilation System:
- ▶ Port & Stbd Fire Dampers Replaced with new
- ▶ Port Supply Fan Replaced with new
- ▶ Stbd Exhaust Fan Replaced with new
- ▶ All four Internal Fan Motors on Central Circulation System has been replaced with new Galley Fan System
 - ▶ Supply Fan Replaced with new
 - ▶ Exhaust Fan Replaced with new

SHIP VALVES

- ▶ All 42 Through-Hull Valves has been removed For ABS inspection
- ▶ Pressure Tested 5 New Type Approved Through-Hull Valves
- ▶ Install All Through-Hull Valves and Pressure Tested After Installed
- ▶ ABS Inspected All Through-Hull Pipes
- ▶ Replaced Stbd A/C Sea Water Outlet Through-Hull Pipe
- ▶ Replaced Stbd Generator Spray Ring By-Pass Through-Hull Pipe
- ▶ Replaced Stbd Sea Chest Through-Hull Pipe
- ▶ Repaired Port Sea Chest Through-Hull Pipes With Valves Closed
- ▶ Repaired Broken Galley Drain Grey Water Pipe Located Between Guest Study & Port Twin
- ▶ Pressure Test All Through-Hull Valves In Place

PUMPS

- ▶ Various have been removed of the vessel, inspected, repaired or replaced.

BOW THRUSTER

- ▶ Removed for inspection and seal replacement

PROPS & SHAFTS

- ▶ Port & Stbd Prop Shaft Wartsila Seals Replaced
- ▶ New port and stbd Stern Tube fwd bearing carrier with stainless steel has been fabricated and ABS approved
- ▶ port & stbd P-Struts repaired with Belzona, ABS approved

GEAR BOXES:

- ▶ both have been removed of the vessel and send over to Reintjes for 10 year Major Service
- ▶ Port & Stbd Vulkan Couplings has been serviced

STEERING SYSTEM

- ▶ emergency steering header tank oil replaced
- ▶ Filter elements and seals replaced
- ▶ port and stbd Rudders removed, bushing and seal replaced, shaft alignment checked, rudders pressure tested, hydraulic rams removed and serviced, hose fitting replaced

MAIN ENGINES

- ▶ all engine vibration mounts replaced

GENERATORS PORT & STBD

- ▶ sea water pipes replaced
- ▶ aft crankcase seals on both engines replaced
- ▶ injector wiring harness on both engines replaced with a CAT upgraded ones
- ▶ power unit space heaters installed

BATTERIES

- ▶ Replaced all fire door batteries
- ▶ Replaced all water tight doors batteries
- ▶ All four Main Engines starter batteries replaced

WINDLASS

- ▶ Both port & stbd units serviced and new seals installed

VSAT & TVRO

- ▶ Install new Italian Sky decoders

ULTRA FOG

- ▶ Completed 10 years inspection and service

AIR COMPRESSED SYSTEM:

- ▶ Replaced both air compressors with new
- ▶ Replace service reservoir relief valve located in the bridge
- ▶ Borescoped all 3 air reservoirs

OWS

- ▶ Opened, cleaned, Monitor Calibrated and inspected by ABS & Flag surveys

BILGES

- ▶ Cleaned and painted all bilges

GALLEY OVEN MODIFICATION:

- ▶ Fabricated a new island and installed 2 new MKN ovens and ice maker

DIESEL PURIFIER

- ▶ Carried out major, intermediate, oil change, clutch pads and bearings replacement

LOAD BANK

- ▶ Replaced all gaskets, including element gaskets and pipe fitting gaskets and replaced pump end

2018**STABILIZER SYSTEM**

- ▶ Port & Stbd fins removed
- ▶ Upper and lower seals replaced
- ▶ Shaft, roller & hull sleeve bearings on Port & Stbd sides replaced
- ▶ All cylinder spherical bearings replaced
- ▶ Replaced all accumulator bladders and filling valves
- ▶ Replaced all o-rings on hydraulic distribution block solenoid valve

BOW THRUSTER

- ▶ All bearings replaced

STERN THRUSTER:

- ▶ Thruster leg replaced with brand new unit
- ▶ Shaft Seals replaced
- ▶ Electrical Motor removed and serviced including megger testing

2017**MAIN ENGINES - Painted both engines after below service.**

- ▶ PORT - Top End 9000 hr service completed
- ▶ Replaced all exhaust gaskets & insulation
- ▶ Replaced sea water flex couplings
- ▶ Removed and serviced both Starters Motors
- ▶ STBD - Top End 9000 hr service completed
- ▶ Replaced all exhaust gaskets & insulation
- ▶ Alternator pulley and belt checked
- ▶ ET Full Check
- ▶ Removed and serviced both Starters Motors

GENERATORS

- ▶ PORT - Major Overhaul Carried out
- ▶ STBD - Major Overhaul Carried out

EMERGENCY GEN

- ▶ Replaced four starter batteries with new

PTO UNITS

- ▶ Rexroth hydraulic motor removed for servicing and testing, unit installed and tested
- ▶ PTO pumps removed and inspected, new seals & gaskets installed, units tested
- ▶ Hydraulic hoses on PTO units replaced

STABILIZER SYSTEM - PTO pump suppressors rebuild A/C SYSTEM

- ▶ Rebuild both 1 & 2 sea water pumps
- ▶ Rebuild both 1 & 2 chiller pumps

2016**PORT & STBD GENERATOR**

- ▶ Installed larger fuel booster pump on both Gens
- ▶ Woodward EasyGen PT Isolation Installation carried out
- ▶ Installed new block heat sensors on both Gens
- ▶ Install Fuel Restriction gauges after Racor Filter

LOAD BANK

- ▶ Replaced all heater elements, pressure sensor and flow sensor
- ▶ Replaced all seals on housing
- ▶ Installed new cooling water pump & motor

MOORING/WINDLASS

- ▶ Entire aft capstans removed for full service
- ▶ Windlass hydraulic pump & gearbox overhauled
- ▶ Gypsy bushings replaced
- ▶ Adaptors and hydraulic hoses replaced

BATTERIES

- ▶ Master & Slave Transas Memory Battery replaced
- ▶ Replaced Port Engine Room Battery Bank batteries 4x
- ▶ Replaced Stbd Engine Room Battery Bank batteries x4

LAZ (TRANSOM) DOOR

- ▶ Removed all locking pins and seals replaced

FRESH WATER SYSTEM

- ▶ All boiler elements replaced
- ▶ Replaced all boilers safety valves

2015

DIESEL PURIFIER

- ▶ Installed a float switch in drain tank
- ▶ Carried out a major service
- ▶ Carried out an intermediate service

MOORING/WINDLASS

- ▶ Windlass brake pad removed and replaced with riveted type
- ▶ All windlass bushings replaced
- ▶ Windless drive unit removed and full service carried out

QUATUM HYDRAULIC SYSTEM

- ▶ 3x solenoid valves on power pack replaced
- ▶ All suppressors and accumulators replaced
- ▶ Inboard sea water cooling pump replaced

BATTERIES

- ▶ All Water Tight door batteries replaced
- ▶ All UPS batteries in Dive Room replaced
- ▶ All APC UPS batteries in A/V Room replaced
- ▶ All APC UPS 2x under bridge console replaced

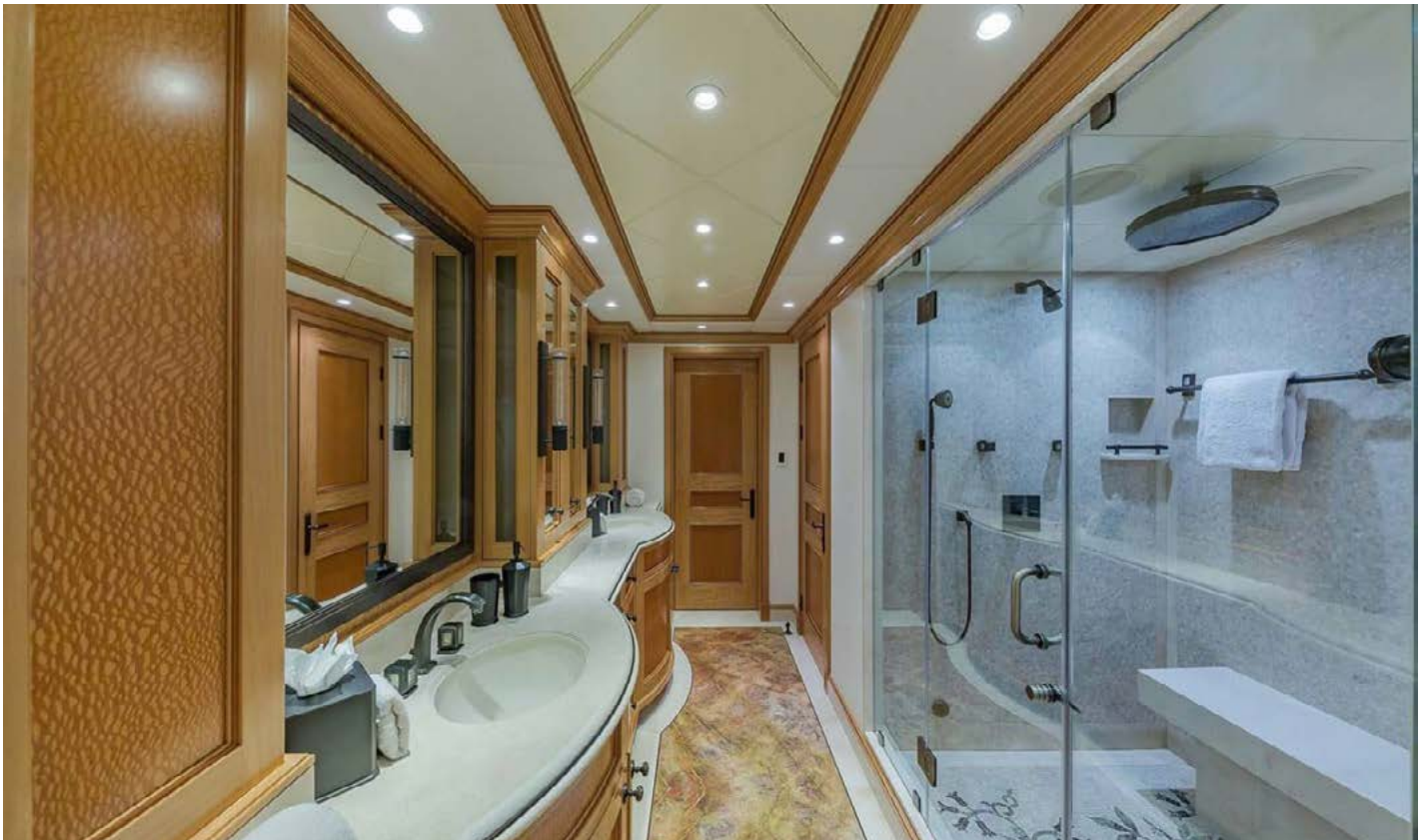
LAZ (TRANSOM) DOOR:

- ▶ Hydraulic rams removed and seals replaced
- ▶ All Hydraulic hoses replaced

These particulars have been prepared by us from information provided by the sellers and are intended as a general guide to the vessel. We cannot, however, be liable for any inaccuracy. It is up to the purchaser to confirm details of concern to him by survey, inspection and/or enquiry of the seller and to ensure that the purchase contract properly reflects his concern and specific details upon which he may rely. We always advise an independent survey.























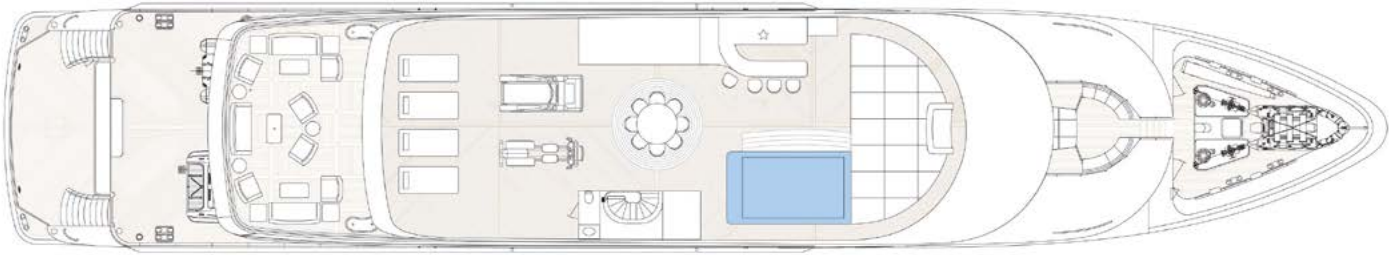




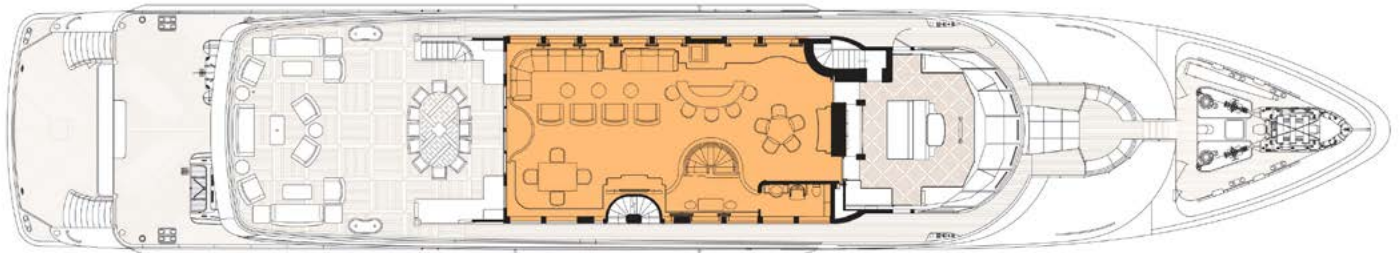


GENERAL ARRANGEMENT

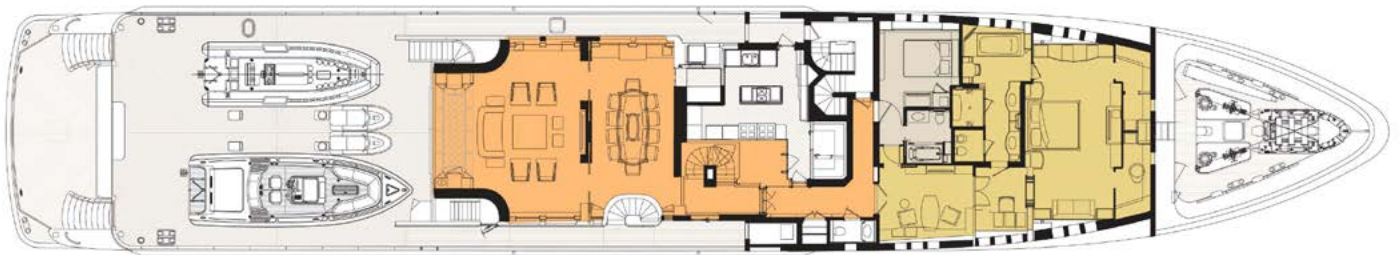
SUNDECK



BRIDGE DECK



MAIN DECK



LOWER DECK

