



RELIANCE

55m | HEESEN | 2022

BEAM
 **9.60m**

DRAFT
 **3.17m**

HULL
 **Steel**

GROSS TONNAGE
 **756**

CREW
 **13**

CRUISING SPEED
 **~13 knots**

MAX SPEED
 **~15.5 knots**

GUESTS
 **12**

CABINS
 **6**

This yacht is not to be published by any broker/third party sites without express permission from the Central Agent

Description

We are thrilled to welcome M/Y Reliance, previously known as 'Project Gemini'; newbuild 55m Heesen, to our sales fleet. She will be delivered before the end of 2022.

Luxury motor yacht Reliance, offers her guests space, opulence and versatility over four luxurious decks. Built with a steel hull and superstructure, she is one of just five of the popular 55 Steel series, with a striking shark-grey hull and powerful lines, making her easily distinguishable on the water.

Her naval architecture was penned by Van Oossanen Naval Architects, her exterior design by Omega Architects, and her interior design by the renowned superyacht designer Luca Dini, the first time the Italian designer has joined forces with the Dutch shipyard.

Reliance features vast outdoor spaces, bringing her guests ever closer to the ocean. On the lower aft deck, she features an expansive swim platform, beach club and wellness centre complete with gym equipment and sauna. Heading up onto the main deck aft you are welcomed into another outdoor lounge area with seating and a table, perfect for relaxation and entertainment.

On the upper deck aft there is a dining table seating up to 12 guests, and an additional seating area. Heading forward there is a cockpit seating area, further forward of which the yacht's two tenders are located.

The outdoor space culminates with Reliance's impressive sundeck, on which there is a jacuzzi forward from which spectacular ocean views can be enjoyed, sun loungers aft, alfresco dining facilities, a well-equipped bar with a Teppanyaki grill, wine coolers and plenty of additional refrigeration – ensuring the drinks are always chilled and the fun is non-stop.

Stepping inside guests will immediately be captivated by Luca Dini's masterful interior design. Taupe and cream tones blend seamlessly with a rich array of darker textures and pronounced metals, resulting in a timeless and elegant environment. The doors are upholstered in fine Italian leather and ceilings are covered with cream fabric. The main salon features free standing furniture including soft and comfortable lounge chairs and a dining table seating up to 12 guests, all complemented with exquisite feature lighting and ornaments.

Forward is the galley and day head, further forward of which the impressive owner's suite is located. Wonderfully spacious with multifunctional areas, the cabin benefits from an abundance of natural light and superb ocean views. Tay wood panelling throughout with dark oak framing adds to the sense of grandeur of this calm and relaxed spaced. The surfaces of the generous ensuite bathroom are marble and it features his and her sinks.

The sky lounge is located on the upper deck, providing an additional indoor area for relaxation and entertainment, with sophisticated seating and a bar area with floor to ceiling windows, leading straight out onto the upper aft deck. The wheelhouse is located forward and features a comprehensive range of navigation equipment.

The guest cabins are located on the lower deck and comprise of two doubles, two twins and one VIP cabin which is located on the starboard side of the upper deck. All cabins are ensuite and benefit from Luca Dini's timeless design choices. Reliance also comfortably accommodates up to 13 crew members in substantial crew quarters located on the lower deck forward, with the captain's cabin as the exception located on the port side on the upper deck, aft of the wheelhouse, for convenient access to the helm.

Main Information

Builder Heesen	Location Rotterdam
Model YN 19755	Classification - Lloyds 100A1 SSC Yacht G6 LMC, UMS - Large Commercial Yacht Code (REG-YC) MCA
Year Built 2022	Flag Registry United Kingdom
Tax VAT Unpaid	

Dimensions

LOA 55m	Draft 3.17m
Beam 9.60m	

Speed/Weight

Cruise Speed 13 knots	Gross Tonnage 756
Cruise Speed Range 4,500 NM	Displacement 677
Max Speed 15.5 knots	Water Capacity 25,410 l
Max Speed RPM 1,800	Black Water 2,240 l
Grey Water 36,130 l	Fuel Capacity 98,890 l
Lube Oil 1,950 l	Water Mist 6,730 l
Bilge Water 1,950 l	Urea Tank 5,100 l
Dirty Oil 2,270 l	

Accommodation

Guests Sleeping 12	Cabin sizes Master, 1 x VIP, 2 x Double, 2 x Twin all with ensuite
Total Guests Cruising 12	Layout of Crew Accommodation Captain, 6 x bunk all ensuite
Number of beds 8	Crew Mess Yes
Master Bed Size (1870 x 2010mm) 1	Safes Fitted in Owners, Guest & Captains Cabin
VIP Bed Size (1520 x 2030mm) 1	Exterior Showers Swim Platform
Doubles Bed Size (1620 x 2030mm) 2	Pools and Jacuzzi Sundeck Jacuzzi
Number of single beds (920 x 2020mm) 4	Sauna Within Beach Club
Number of cabins 6	Gym Within Beach Club
Number of double cabins 4	

Machinery

Engine Type
2 x MTU 8V 4000M63

Engine Hours
Port M/E – Commissioning Hours Only
STBD M/E – Commissioning Hours Only

Steering
Hydromar – HFT-28-XL

Stabilisers
Naiad Dynamics 720S

Air Conditioning
Fitted Throughout

Watermaker
Idromar MC9 Duplex

Water Heaters
Fitted

Bow Thruster
ZFMT 2001 FP – 125 kW

Fuel Separators
Fitted

Generators
2 x Zenoro – 175 kW - Three Phase

Generator Hours
Port Generator – Commissioning Hours Only
STBD Generator – Commissioning Hours Only

Shore Power Converters
Eekels Marpower
– Input – 3 Phase 170-520 Volt at 40-70Hz
– Output – 3 Phase 230 Volt at 50 Hz

Hull & Deck

Hull ID
19755

Hull Material
Steel

Deck Material
Teak

Hull Configuration
FDHF

AV, IT & GMDSS Equipment

INM-C GMDSS/SSAS/LRIT – Cobham Sailor – 6110
2 x GMDSS portable radio's – Cobham SP3520 – fitted with internal battery
EPIRB – Cobham SGE-II
1 x AIS-SART – Cobham 5052
TVRO dome – Seatel 100

Emergency Generator
1 x Zenoro 80kW Three phase

Windlass
2 x anchor windlasses fwd and 2 x mooring windlasses aft

Anchors & Chains
2x Steen HHP PTW/FB 430kg - 20.5mm studlink, 165m chain

Cranes & Davits
Telescopic Hydromar Crane
– Safe Working Load 1900 Kg
– lifting height approx 5m
– Max Reach 6m

Passerelle
Hydromar SW4 - Fitted

Water Treatment
Sewage Treatment plant

LSA Details
– 4 x 20 Persons life rafts.
– 2 x 6 Person life rafts
– 8 x Life Rings (2 x M.O.B Light and orange smoke signal and 4x 30 metre line attached).
– 26 x inflatable adult life jackets
– 4 x inflatable children life jackets
– 6 x inflatable adult life jacket with harness

Hull Designer
Omega Architects

Hull Colour
Shark Grey

Interior Designers
Luca Dini Design & Architecture

V SAT Antenna
1 x Sailor 900 KU

4G Internet Antenna
2 x Laird Multiband 4G Antenna

Exterior Loose Furniture

Main Deck
– 2 x Small Coffee Tables – Aft Deck
– 3 x Lounge Chairs – Aft Deck

Wheel House Deck
– 3 x 2 Seater Sofas – Aft Deck
– 2 x Small Coffee Tables – Aft Deck
– 1 x Large Dining Table
– 12 x Dining Chairs
– 2 x Small Coffee Tables – In front of Wheelhouse

Sun Deck
– 3 x Sun Loungers
– 1 x Large dining table – Port Side
– 12 x Dining chairs – Port Side
– 1 x Three Seat Sofa – Starboard Side
– 5 x Bar Stools

Bridge & Wheelhouse Equipment

Chartradar – Radart1 – Furuno FAR3210-BB
Chartradar – Radar2 – Furuno FAR3210-BB
VHF1 – Cobham Sailor RT6222
VHF2 – Cobham Sailor RT6222
MF/HF transceiver – Cobham Sailor 6310
INM Fleet Broadband – Cobham FBB 250
DGPS1 – Cobham 6570
DGPS2 – Cobham 6570
Gyrocompass – Simrad GC-85
Autopilot – Simrad AP-70
Navtex – Cobham 6391

Weatherstation – Gill GMX500
Wind/speed/depth display (5pcs) – Furuno RD33/
RD50
Echosounder – Furuno FE800
2 x FiFi Portable Radio – Cobham SP3965
ECDIS – Furuno FMD3200-BB
Magnetic compass – Sperry Marine Jupiter
AIS – Cobham 6281
Speedlog – Furuno DS80
GSM11 – Simado GFx11
BNWAS – Furuno BR500

Accommodation Equipment

Galley Equipment

Galley
– 2 x Miele H 6660 BP Ovens
– 1 x Miele H 6600 BM Microwave Oven
– 3 x Miele CS 1212 Two Zone Cooking Plate
– 1 x Miele DG 6600 Steam Oven
– 1 x Miele CS 1312 BG Grill
– 1 x Miele CS 1411 F Deep Fryer
– 1 x Miele PG 8056 U Dishwasher
– 1 x Custom Galley Hood

Sundeck
– 1 x Tepan Yaki, Atag TV 3011 M

Cold Rooms & Freezers

Galley
– 1 x Semi Custom 600 L Fridge
– 2 x Semi Custom 600L Freezer

Pantry – Main Deck
– 1 x Miele K 33422I Fridge
– 2 x Lounge Chairs

Crew Mess
– 1 x Custom 600L Fridge

Wine Fridges

Pantry – Main Deck
– 1 x Eurocave Half Height Wine Cooler
Skylounge Bar
– 1 x Eurocave Wine Cooler – Under Desk

Pantry Equipment

Pantry – Main Deck
– 1 x Miele PG 8056 U Dishwasher
– 1 x Hoshisaki Ice Maker

Pantry – Wheel House Deck
– 1 x Miele PG 8056 U Dishwasher
– 1 x Hoshisaki Ice Maker

Crew Mess
– 1 x Miele M6260 TC Microwave
– 1 x Miele PG 8056 U Dishwasher

Pantry – Wheelhouse Deck
– 1 x Miele PG 8056 U Dishwasher
– 1 x Hoshisaki Ice Maker

Skylounge Bar
– 1 x Dometic CRX 80 S Fridge

Sun Deck
– 1 x Dometic CRX 80 S Fridge
– 1 x Hoshisaki Ice Maker

Laundry Equipment

– 2 x Miele PW 6065 Plus Washer
– 2 x Miele PT 7136 Plus Dryer
– 1 x Miele B 995 D Ironing Machine

Interior Loose Furniture

Wellness Centre

- 2 x Sun Loungers
- 2 x Lounge Chairs

Officer Cabins

- 2 x Desk Chairs

Crew Cabins

- 3 x Desk Chairs

Guest Cabins

- 4 x Vanity Chairs (one in each room)

Main Salon

- 3 x 2 Seat Sofa
- 2 x Lounge Chairs
- 1 x Salon Table

Dining

- 1 x Dining Table
- 12 x Dining Chairs

Owners Suite

- 1 x Desk Chair
- 1 x Desk
- 2 x Lounge Chairs
- 3 x Poufs
- 1 x Ottoman
- 1 x Side Table
- 1 x Vanity
- 1 x Vanity Chair

Sky Lounge

- 1 x 4 Seat Sofa
- 4 x Lounge Chairs
- 1 x Salon Table
- 3 x Side Tables
- 4 x Bar Stools

Captain's Cabin Wheelhouse

- 1 x Desk Chair
- 2 x Pilot Chairs
- 2 x Desk Chairs

Gym Equipment

- Technogym Treadmill
- Technogym Elliptical Crosstrainer

- Technogym Bench
- Cycling Turbo Trainer

Tender & Toys

- 72m Castoldi jet tender Z3
- SOLAS rescue tender
- 1x SeaDoo RXPX

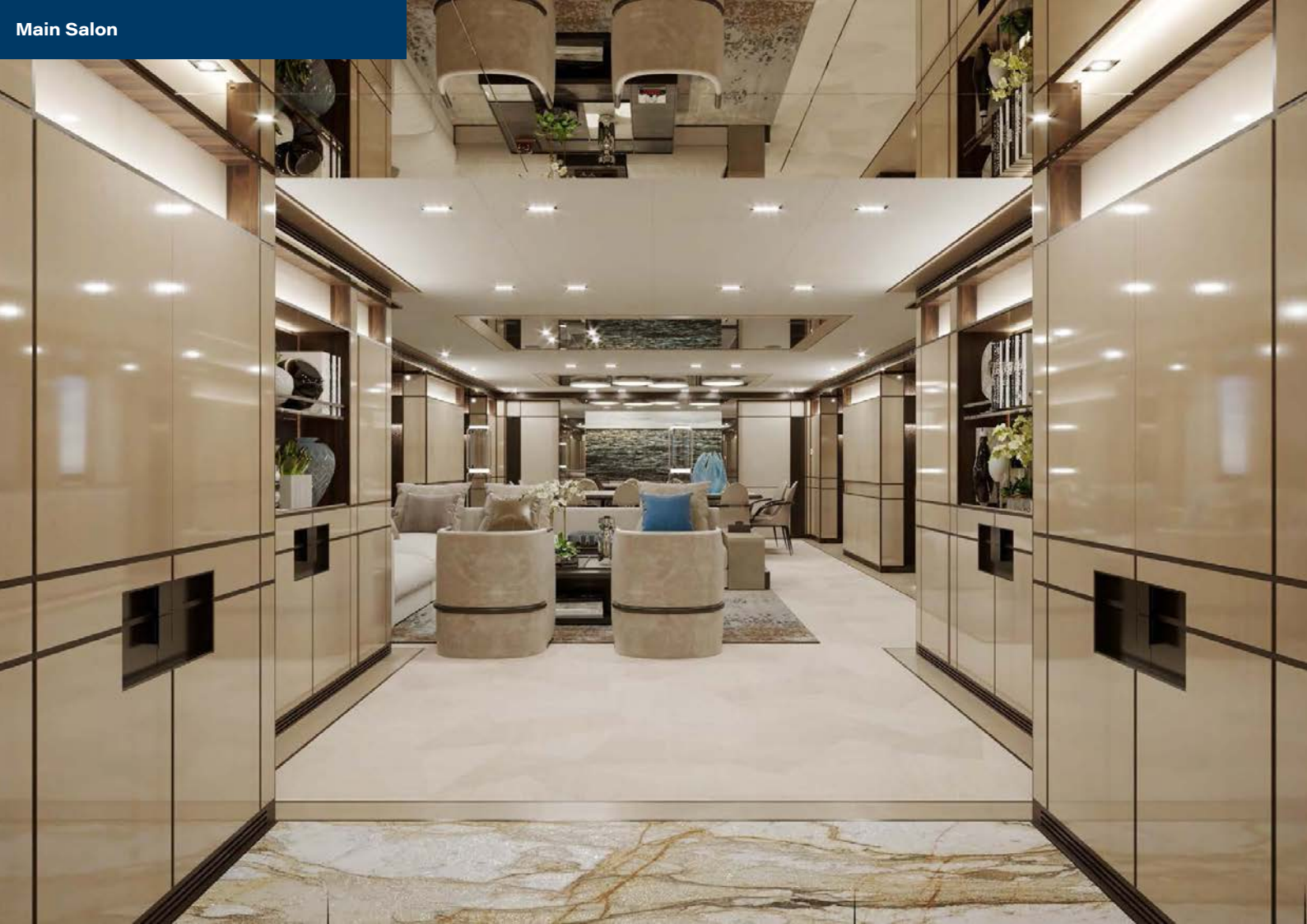
- 1x SeaDoo Trixx
- 1x Awake RÅVIK 3
- 1x Flite Standard





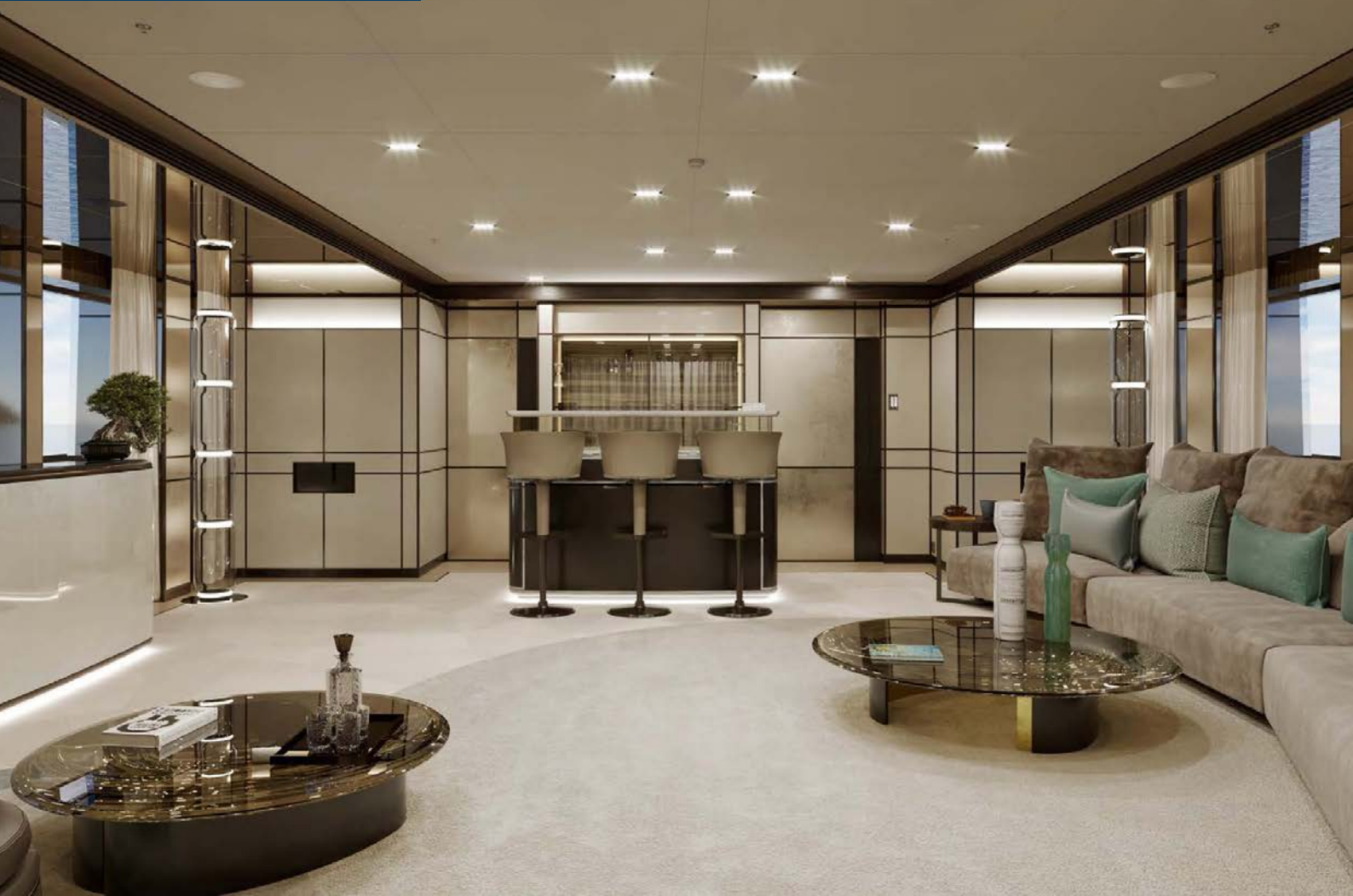
















Master Cabin

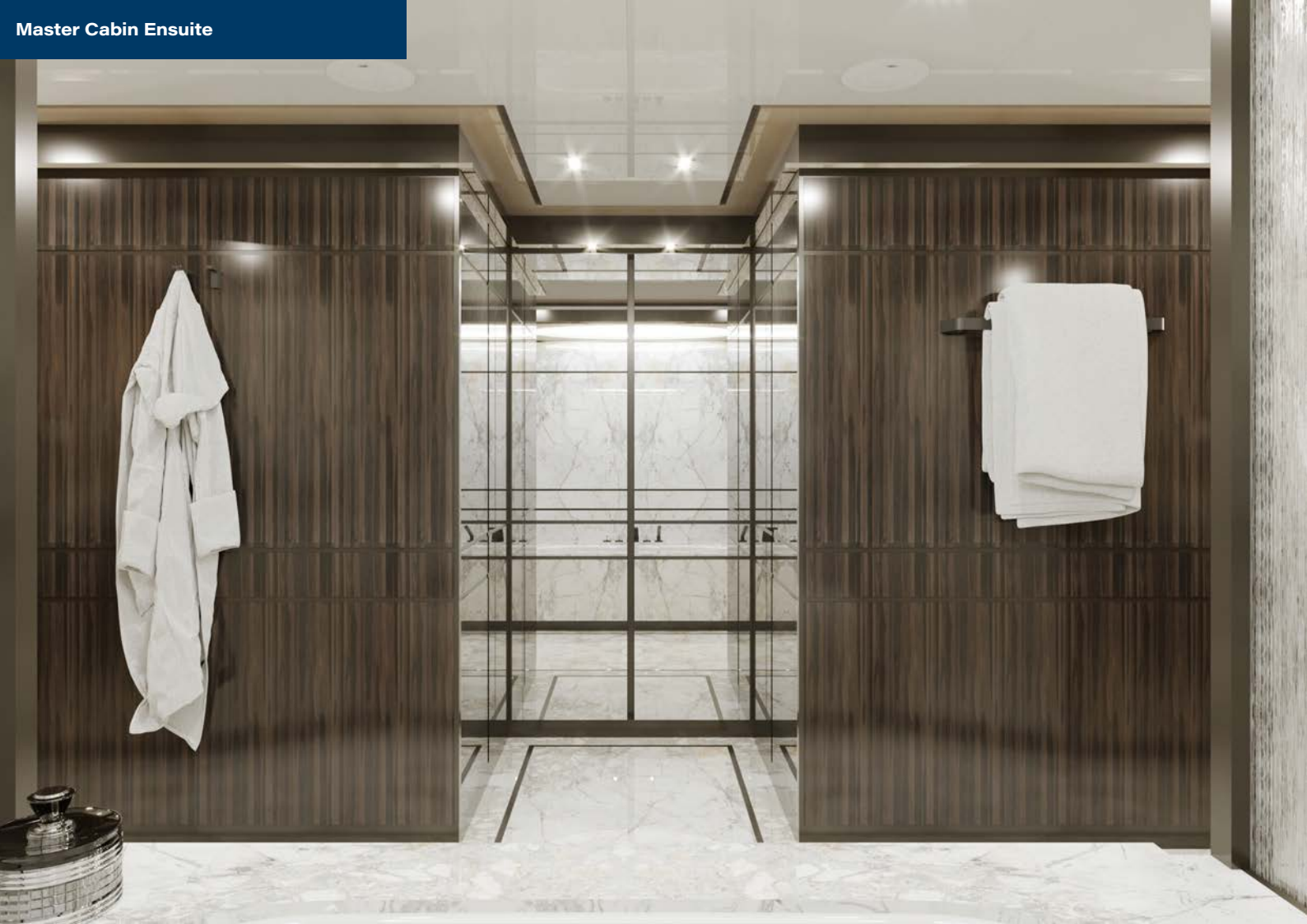




Master Cabin Seating

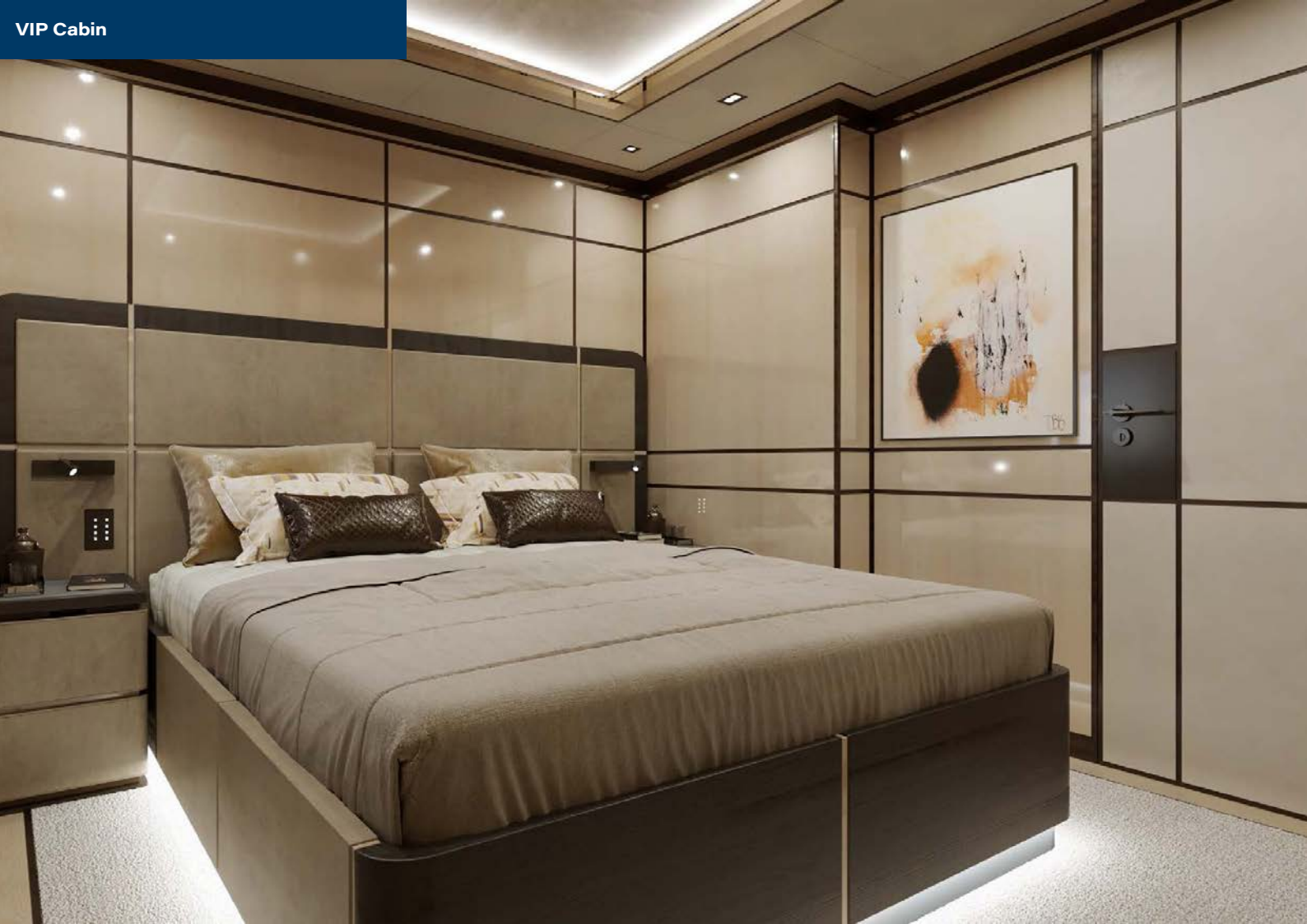














Double Cabin





Double Cabin Ensuite



Double Cabin Ensuite



Twin Cabin



Twin Cabin



Twin Cabin Ensuite







