

PLVS VLTRA



LOA:	242' 10" (74m)	Delivery/Model	2016
Beam:	40' 3" (12.25m)	Year:	
Max Draft:	12' 6" (3.8m)	Model:	Limited Edition 242
Tonnage:	1,725	Builder:	AMELS
Speed:	13 Knots 16 Knots	Type:	Motor Yacht Mega Yacht
Flag:	Cayman Islands	Staterooms:	6
Location:	N/A, Antigua And Barbuda	Fuel Cap:	155000 L (40946.67 Gal)
VAT Paid:	VAT Unpaid	Water Cap:	38000 L (10038.54 Gal)
		Engines:	2x, Caterpillar, 3516C, 2575 HP
		Price:	€94,900,000 EUR

Additional Specifications For PLVS VLTRA:

LOA:	242' 10" (74m)	Delivery/Model	2016
Beam:	40' 3" (12.25m)	Year:	
Min Draft:	11' (3.35m)	Year Built:	2016
Max Draft:	12' 6" (3.8m)	Builder:	AMELS
Hull Material:	Steel	Model:	Limited Edition 242
Hull Config:	Displacement w/ Bulbous Bow	Type:	Motor Yacht Mega Yacht
Hull Designer:	Amels	Engines:	2575 HP, Twin, 2016, Inboard, Diesel, Caterpillar, 3516C, 9601hrs / 9592hrs
Deck Material:	Teak	Staterooms:	6
Tonnage:	1,725	Sleeps:	12
Range At Cruise	5000	Heads:	11
Speed:		Crew Quarters:	11
Speed:	Cruising 13 Knots	Crew Berths:	18
	Max 16 Knots	Captain Cabin:	Yes
Int Designer:	Winch Design	Classifications:	+100A1 SSC Yacht Mono G6
Ext Designer:	Tim Heywood	MCA:	Yes
Fuel Capacity:	155000 L (40946.67 Gal)	ISM:	
Water Capacity:	38000 L (10038.54 Gal)		
Flag:	Cayman Islands		
Location:	N/A, Antigua And Barbuda		
Price:	€94,900,000 EUR		
Tax Status:	VAT Unpaid		

ACCOMMODATION

Staterooms	6
Sleeps	12
Configuration	1x Master, 2x VIP, 2x Double, 1x Twin
Crew Cabins	11
Crew	19

MACHINERY

Main Engines	2x Caterpillar (3516C) 2,575 hp Port 9,601/ Stb 9,592 hours
Gear Boxes	Reintjes WAF 863 (reduction of 4,955 :1)
Shafts & Propellers	Rubber Design shaft line arrangement
Propellers	2x Fixed-pitch five-blade CuNiAl
Steering gear installation	Promac

TANK CAPACITIES

Fuel oil, including day tanks	175 000 L
Fresh water	39 000 L
Pool water	30 500 L
Grey water	26 900 L
Black water	11 500 L
Black water tank	2 400 L
Oily Bilge water	6 400 L
Dirty oil	6 000 L
Clean oil	8 000 L
Watermist	9 000 L

ELECTRICAL SYSTEM

	2x Caterpillar 3516C hd C-rating 280 ekW @ 0.8 pf - Port Gen 18,370 hrs - Mid Gen 18,343 hrs
Generators:	- Starboard 1x Caterpillar C9 200 ekW @ 0.8 pf - 8,135 hrs
	1x Caterpillar C 6.6
Emergency genset	- 5,441 hrs
Voltage:	230/400 VAC
Phase(s):	3x
Frequency:	50 Hz
Shore connection - transformer	Imtech
Batteries main engines	Imtech
Batteries generators	Imtech
Batteries emergency set	Imtech
Lightning normal control	Imtech
Emergency lighting	Imtech
Search lights	Imtech
Portable searchlight	Imtech
Day signalling lamp	Imtech
Underwater lights	Imtech

COMMUNICATION EQUIPMENT

Fleed Broad band satellite communication	FBB Alpatron / Sailor
Navtex receiver	NCR 333 Alpatron / JRC
VHF radio telephones	TT6222 Alpatron / Sailor
Telephone installation	Van Bergen Henegouwen
SSB radio MF/HF transceiver	TT compact 6000 Alpatron / Sailor
Portable GMDSS VHF	SP 3520 Alpatron / Sailor
Inmarsat-C satellite communication	TT 6010 Alpatron / Sailor
Entertainment system	Van Bergen Henegouwen
Crew intercom system	Imtech

NAVIGATION EQUIPMENT

ARPA S-Band radar	JMA 5330/12 Alpatron / JRC
ARPA X-Band radar	JMA 5310/6 Alpatron / JRC
Automatic identification system	R4 Alpatron / SAAB
Autopilot	Alphaseapilot MFC Alpatron
Echo Sounder	JFE-380 Alpatron / JRC
Radar Transponder (SART)	S 4 Alpatron / Mc Murdo
Gyro Compass	Alphaminicourse Alpatron
Magnetic Compass	MK4 Alpatron / Klevin Hughes
Speed log	Anthea Alpatron / Ben
ECDIS	JFE-380 Alpatron / JRC
DGPS	sliding shoe pump L125 TBU / Megator
Wind Unit	PB-200 Alpatron/Airmax
Remote control FPP	Marex OS Imtech/ Rexroth

ANCILLARY EQUIPMENT

Bow anchor	2 x 855 kg Wortelboer, chain 192,5 m
Stern anchor	1x 428 kg, chain 165 m
Anchor chain	Wortelboer
Anchor winch aft	Steen
Anchor winch fore	Steen, type 23-9 size 13-30
Bilge / fire fighting pumps	VM-EF-50/20, Reikon / Azcue
Dirty oil pump	sliding shoe pump L125 TBU / Megator
Blackwater pump	B45G, Reikon / Azcue
Blackwater treatment system	HL Cont Plus 05, Nicoverken / Hamann
Hot water pump	UP 25-80-N 180 Reikon/ Azcue
Fresh water pumps	2x circulation pumps, 70 m ³ /hr @ 2,9 bar VM-80/16 Reikon / Azcue
Freshwater filtration/treatment	Idromar
Fuel filter	Separ 2000 Snijder
Fuel oil separator	P605 Alfa Laval
Fuel oil tender fill pump	BT-HM-32D3 Reikon / Azcue
Fuel oil transfer pump	BT-IL-52D3 Reikon / Azcue
Grease separator	G.T.- 0,5 Facet
Greywater pumps	B45G Reikon / Azcue
Tender cranes	4x telescopic overhead sliding cargo cranes in the water sport store, 2x at each side, for handling the tenders.
1x Jet ski crane	2x 400 VAC winch motors 500 kg Van Driel
Stabilizer system	4x Quantum Model QC 1800 and 1500 Zero Speed non-retractable fins for active roll damping from 0 to maximum speed

Bow thruster	Electric 200 ekW, E-prop VEP 800, Veth
Sea water pump	2x frequency controlled sea water cooling pumps 45 m3/hr @ 1,2 bar
Fresh water pumps	
Cathodic protection	Chemetall, Zinc
Hatches in hull and superstructure	de Vor, Minderhoud & Schipper
Capstans	59-9 size 08-40, Steen
Exhaust gas system emergency generator engine	Marquip
Exhaust gas system main auxiliary engines	Hug Engineering, Marquip
Exhaust gas system main engines	Marquip
Hull side doors	Winel
Hydraulic power pack I	QIS 160 Quantum Hydraulic
Hydraulic power pack II	QP20/20 Quantum Hydraulic
Hydraulic power pack III	van Driel
Hydraulic power pack IV	Promac
Hydraulic power pack V	Holland Marine lift
Hydrophoor pumps	BR-4/30RR Reikon
Hydrophoor set (pumps + tank)	BR-41/30RR + 50 ltr tank Reikon / Azcue
Anti fouling system	Corrosion & Water Control
Electric Heater	ETECH W28 ACV
Accommodation ladder	Winel
Back-flow preventers	909Watts
Exposed sliding doors	Alukwa
Fairleads	Damen Trading Suzhoy
Hatch over MOB tender	Winel
Mooring bollards	Damen Trading Suzhoy
Sanitary fixtures	Grohe, Dornbracht
Sanitary vacuum system	Jets 15 MB-DNcoverken / Jets
Tender filling equipment	Braunwarth BT 5.15.19 ExAccess Benelux
Toilets, bidets	Evac
Transom door	Winel
Watertight door inside hull (hinged), Watertight sliding door inside hull, Weathertight hinged doors superstructure	de Vor
Wind Unit	PB-200Alphatron/Airmax
Window wipers	Bellship / Speich
Windows	Wigo JB Nautic Marioff Hi-Fog

AUXILIARY EQUIPMENT

Air conditioning	500 l/min at 7,5 bar
Watermakers	2x IDM 16 Duplex Idromar reverse osmosis water makers 16.000 l per 24 hours
Calorifiers	3x 606 l Electric heating 24 kW
Air compressor	Kaeser SX 6 Luitec / Kaeser
Air dryer	AS-K 182 Luitec / Zander
Galley equipment and furniture	Roland Kuchentechnik
Laundry equipment	Miele
Heat exchanger	APV Q030 MG-06/2 AMW Marine
Hot water boilers	HR 601 ACV
Elevator	Holland Marine Lift
Cold rooms	Fridina
Conning	Alpha conningAlphatron
Dumbwaiter	KE-170Holland Marine Lift

SAFETY & SECURITY EQUIPMENT

Fire fighting equipment	Tyco T2000
Fixed fire fighting system	Surviva 25 Survitec / RFD
Smoke and fire detection	JB Nautic
Life raft	Ricom 3500 Imtech
Life saving appliance	E 5 Alphatron / Mc Murdo
Engine room alarm system	E 5 Alphatron / Mc Murdo
EPIRB	E 5 Alphatron / Mc Murdo

OTHER EQUIPMENT

- Swimming Pool
- Jacuzzi Pool in the Middle
- Jacuzzi Pool on sundeck
- Beach Club
- Swimming Platform
- Gym
- Spa
- Hammam
- Steam room
- Tender Garage

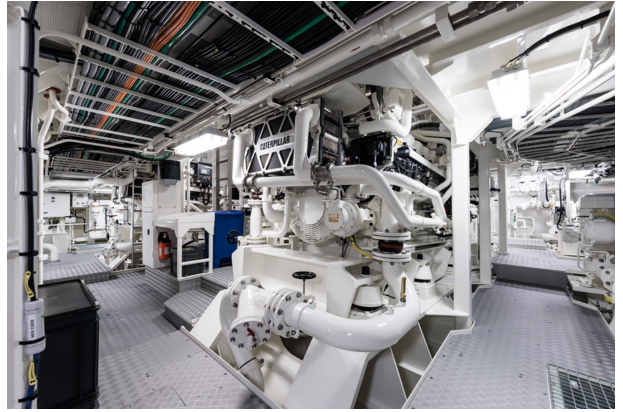












PLVS VLTRA General Arrangement

