

PIVUS VILTRA



BASIC INFORMATION

Builder Amels
Year 2016
Classification Lloyd's Register, 100A1,
SSC, Yacht Mono, G6 LMC

DIMENSIONS

Length overall: 74 m 242' 9"
Beam 12.25 m 40'2"
Draught max. 3.8 m 12' 5"
Draught min. 3.35 m 11'

HULL

Displacement 1,600 T
Gross tonnage 1,725 T
Hull Steel
Superstructure Aluminium

DESIGN

Exterior designer Tim Heywood
Interior designer Winch Design
Naval Architect Amels

PERFORMANCE

Engines 2x Caterpillar (3516C) 2,575 HP
Max Speed 16.5 Knots
Min Speed 15 Knots
Fuel Tanks 155,000 L 41,000 Gallons
Water tanks 38,000 L 10,000 Gallons
Range 5,000 Nautical Miles

ACCOMMODATION

Cabins 6
Guests 12
Crew cabins 11
Crew 19

AMENITIES

- Gym
- Spa
- Sauna
- Steam room
- Swimming Pool
- Beach Club
- Swimming Platform
- Tender Garage





MAIN SALON



DINING



OWNER'S LOUNGE



MASTER STATEROOM









VIP STATEROOM



GUEST STATEROOM



GUEST STATEROOM



GUEST STATEROOM



BEACH CLUB



HAMMAM



SPA



POOL







BRIDGE DECK AFT

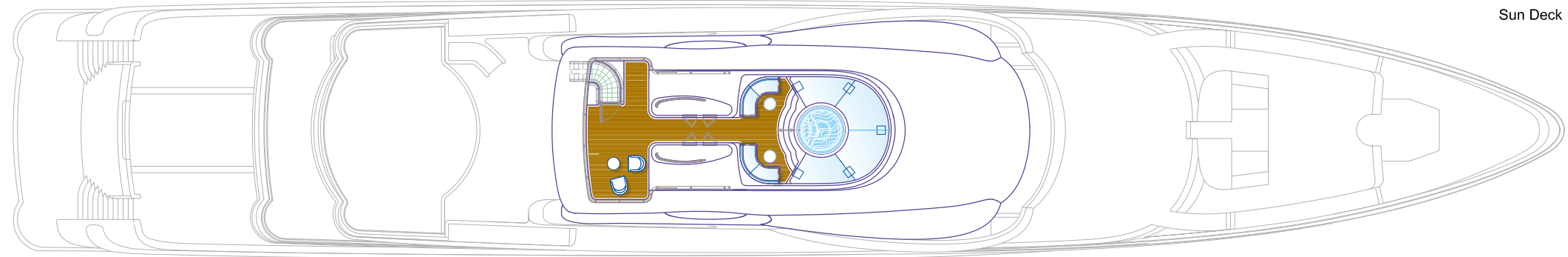
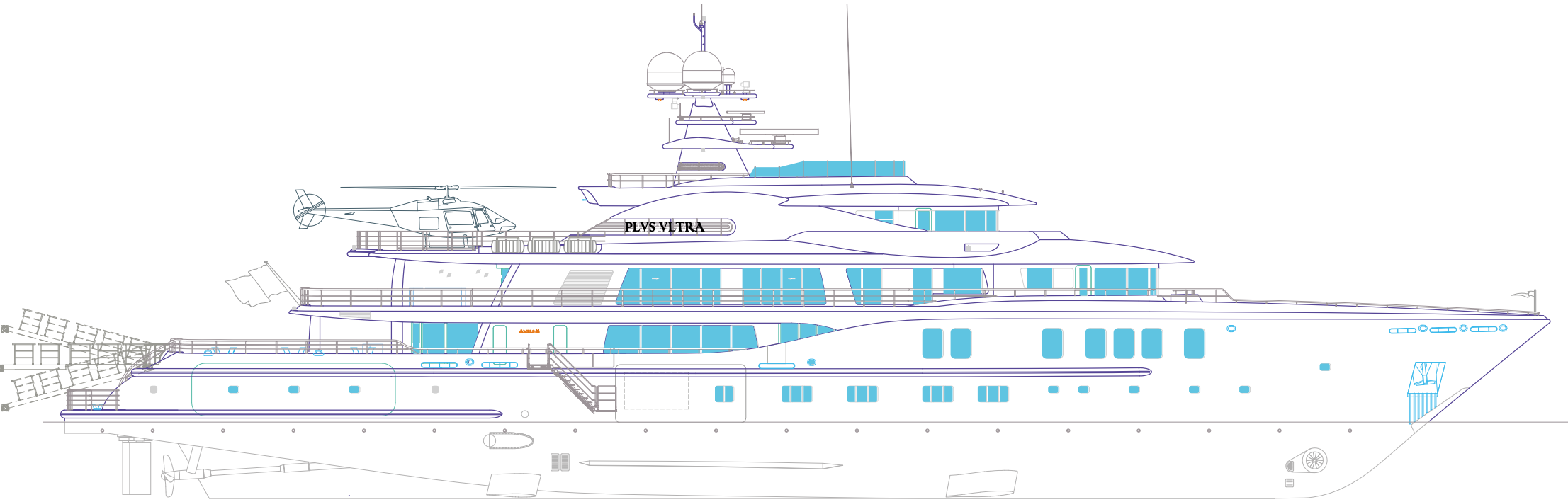


WHEELHOUSE

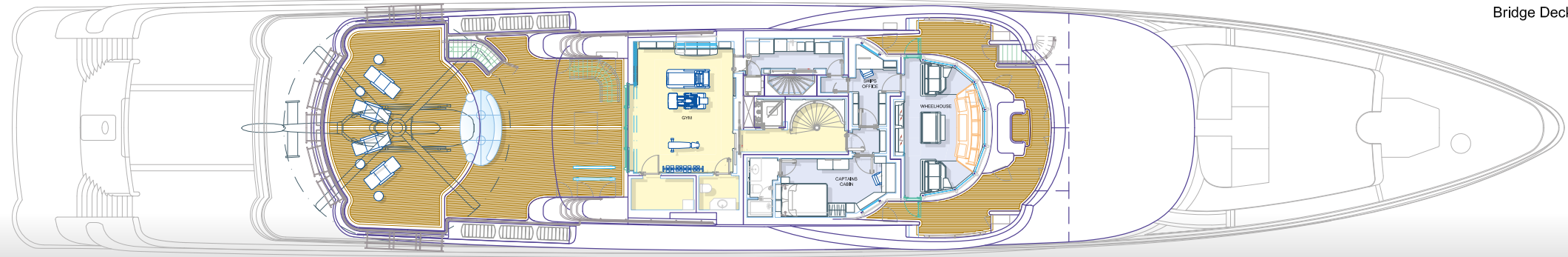


SUN DECK JACUZZI



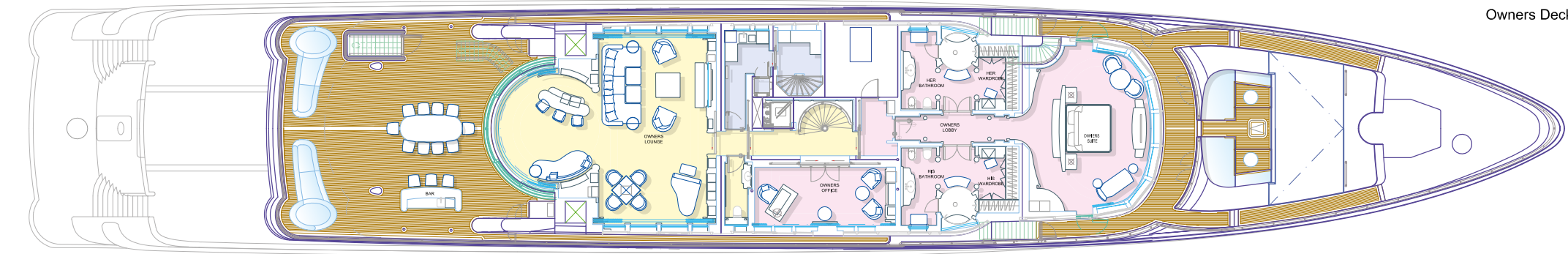


Sun Deck

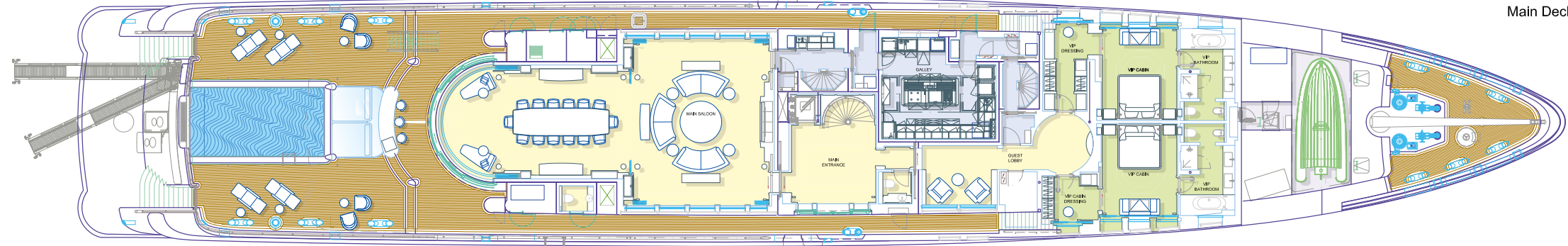


Bridge Deck

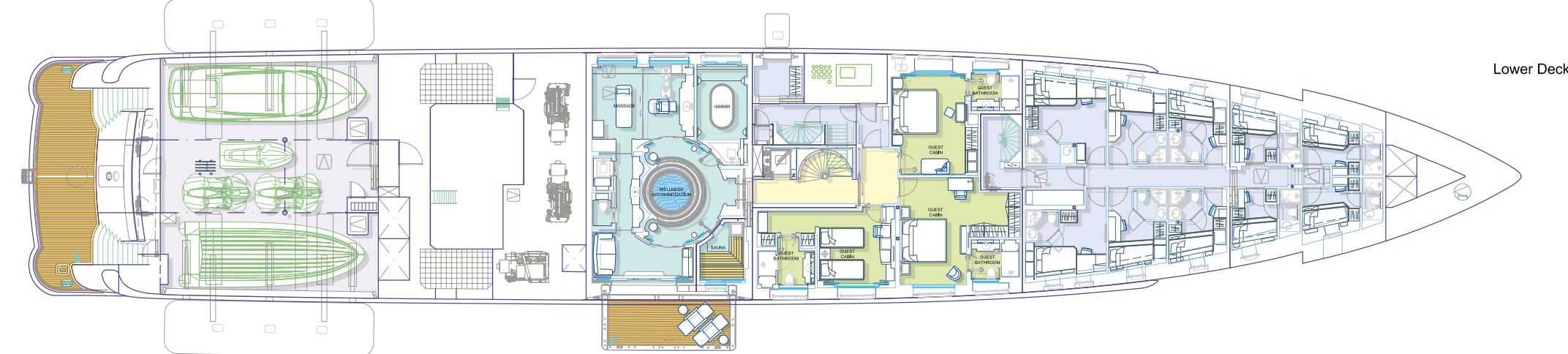
GENERAL ARRANGEMENT



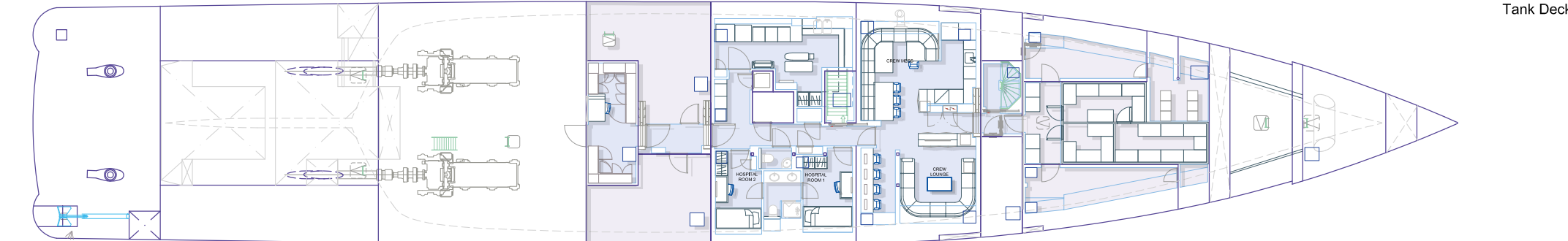
Owners Deck



Main Deck



Lower Deck



Tank Deck

