

FB264
Beretti
ITALIAN EXCELLENCE SINCE 1873

Beretti
ITALIAN EXCELLENCE SINCE 1873

EACH
OF OUR
YACHTS
IS UNIQUE.



BECAUSE
EACH OF
OUR OWNERS
IS UNIQUE.

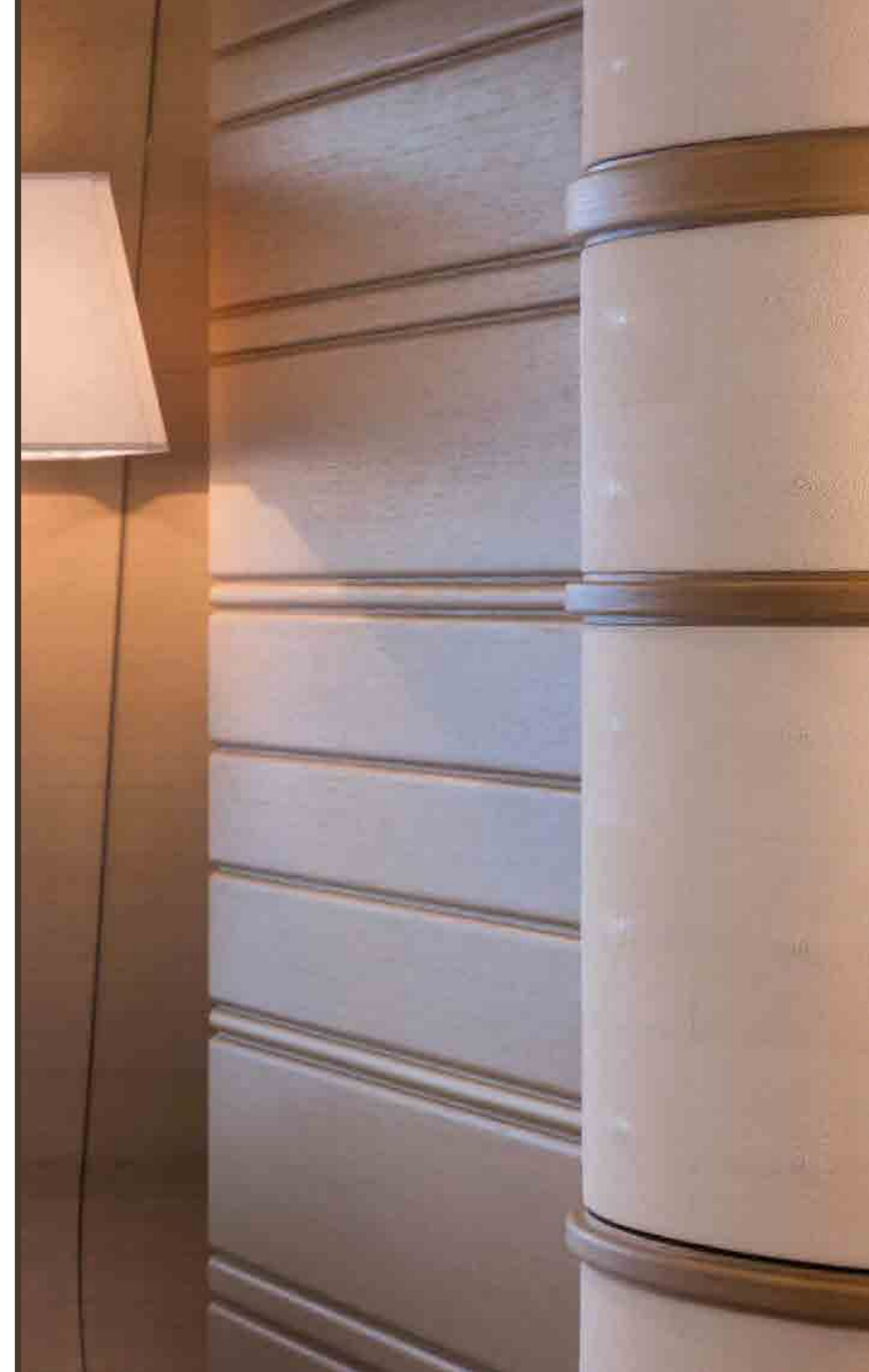




FB264



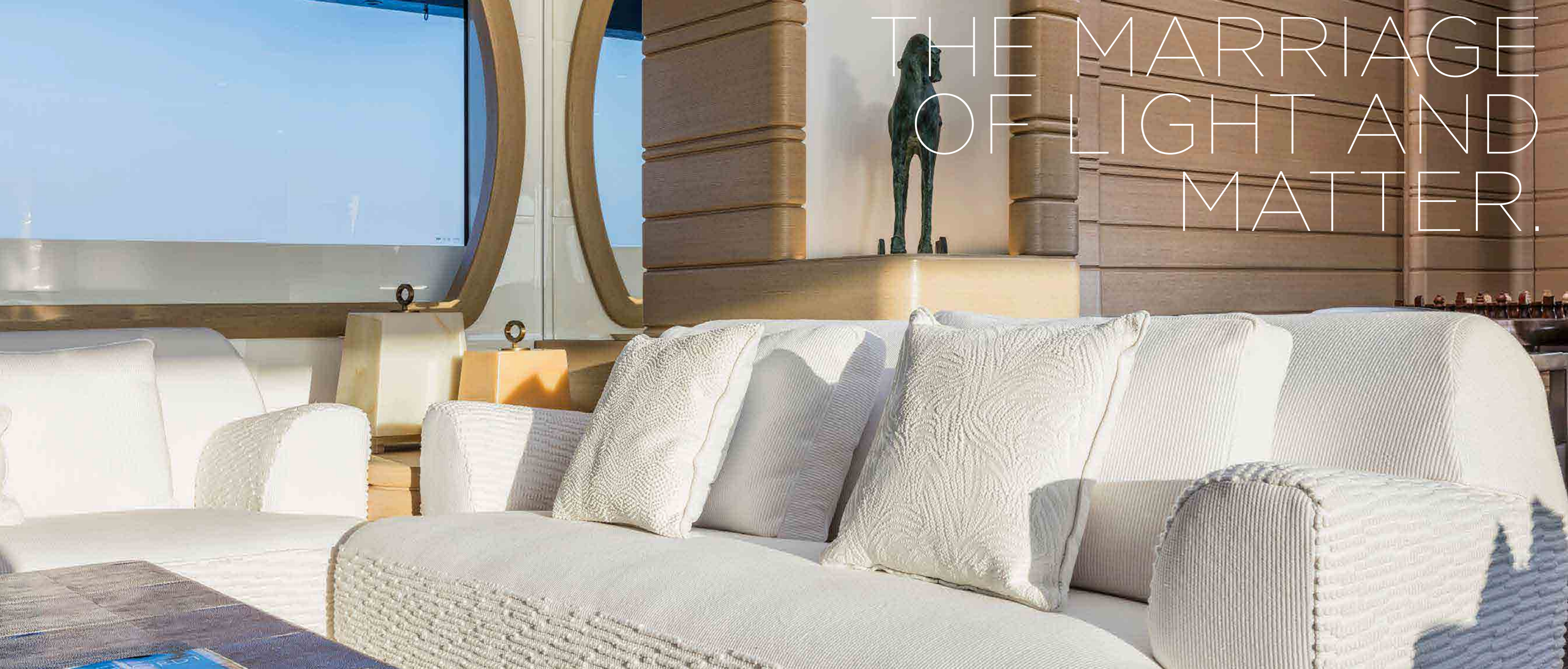
AND TODAY
WE CELEBRATE
A UNIQUE
MARRIAGE.



FROM THE UNION OF AN
ARCHITECTURE STUDIO
THAT PRODUCES LUXURY,
MADE-TO-MEASURE
DESIGNS, A SHIPYARD
THAT THRIVES
ON CHALLENGES
AND INNOVATION,
AND THE FINEST
ITALIAN CRAFTSMEN,
THE RESULT WAS DESTINED
TO BE SOMETHING
EXTRAORDINARY.



THE MARRIAGE
OF LIGHT AND
MATTER.



63.5 M (208' 4")
OF SLEEK BEAUTY,
WHERE LIGHT
AND MATTER MERGE
TO CREATE
DISTINCTIVE SPACES
OFFERING PURE JOY
AND PLEASURE EVERY
MOMENT OF THE DAY.




THE LIGHT
OF THE
SUN, THE
MATTER
OF
DREAMS.





MANY MATERIALS COMBINE IN THE SERVICE OF A SINGLE GOAL: ABSOLUTE HARMONY AND ELEGANCE. SHAGREEN, BRONZE, FOSSILS AND CURVED SLATS THAT FORM PLAYFUL EFFECTS ON THE WALLS AND FURNITURE. SARDINIAN TEXTILES WOVEN BY EXPERT HANDS.



THESE ARE JUST
— A FEW OF THE FEATURES
THAT PLAY POETICALLY
WITH LIGHT TO FORGE
AN ATMOSPHERE WORTHY
OF YOUR DREAMS.

THE
PERFECT
UNION
BETWEEN
INTERNAL
FORMS





AND THE
BREATH
OF THE SEA.

THE MAIN DECK
WELCOMES YOU WITH
ITS IMPRESSIVE SOFAS,
SIGNALLING STRAIGHT
AWAY THE ABSOLUTE
DEDICATION TO HOSPITALITY
AT THE HEART
OF THIS YACHT'S DESIGN.





MAIN DECK SALOON

SEE



MAIN DECK LIVING AREA



THE CONVERSATION AREA IS LARGE AND RELAXED, AS ARE THE LIVING AREAS, WHICH INVITE YOU TO FEEL AT EASE, LOOK AROUND,

AND ADMIRE
THE REFINED
MIRROR EFFECT,



MAIN DECK FOYER





MAIN DECK DINING



THE CURVED SLATS ON THE WALLS CREATING SMOOTH, SINUOUS CURVES, AND BEYOND, THE IRRESISTIBLE ALLURE OF THE SEA.

THE COFFEE TABLES
ARE UPHOLSTERED
IN ELEGANT NATURAL
SHAGREEN WITH BRONZE
DETAILS. THE CARPET
IS SET INTO THE METEORITE
MARBLE FLOOR,
LAID IN LEATHER-EFFECT
SLATS FOR A HARMONIOUS
CONTRAST WITH
THE SURFACES
OF THE FURNITURE.



FEEL



THE VIP ZONE IN THE BOW
COMPRISES TWO TWIN CABINS
EACH WITH HALLWAY,
EN-SUITE BATHROOM,
BOOKSHELF, DESK AND BAR.

MADE FROM CURVED
WOODEN SLATS
WITH INTEGRATED
HANDLES, THE CHEST
OF DRAWERS IS A
SINGULAR EXAMPLE
OF HIGH-QUALITY
CABINETWORK,
EMBODYING THE
EXPERIENCE AND
CREATIVITY OF ITALIAN
CRAFTSMANSHIP.





MAIN DECK VIP'S BATHROOM



CRAFTSMANSHIP





UPPER DECK



ON THE UPPER DECK,
THE DYNAMIC SOUL
OF THIS MEGA-YACHT
COMES INTO ITS OWN.
THE OUTDOOR SALON
CAN EITHER BE PREDISPOSED
FOR ENTERTAINING
OR RESERVED FOR THE
OWNER'S EXCLUSIVE USE.

THE SALON OFFERS ACCESS TO THE
LAVISHLY APPOINTED PRIVATE ZONE
OF THE OWNER'S AREA:



80 SQM (262' 6" SQFT) OF PURE
PLEASURE, DEDICATED TO SATISFYING
THE OWNER'S EVERY NEED AT ANY
MOMENT OF THE DAY.

HERE ONCE AGAIN
LIGHT AND MATTER
PLAYFULLY INTERACT,
AND THE LARGE
FULL-HEIGHT WINDOWS
GENERATE A SOOTHING
SENSE OF ONENESS
WITH THE SEA.



UPPER DECK VIP'S CABIN



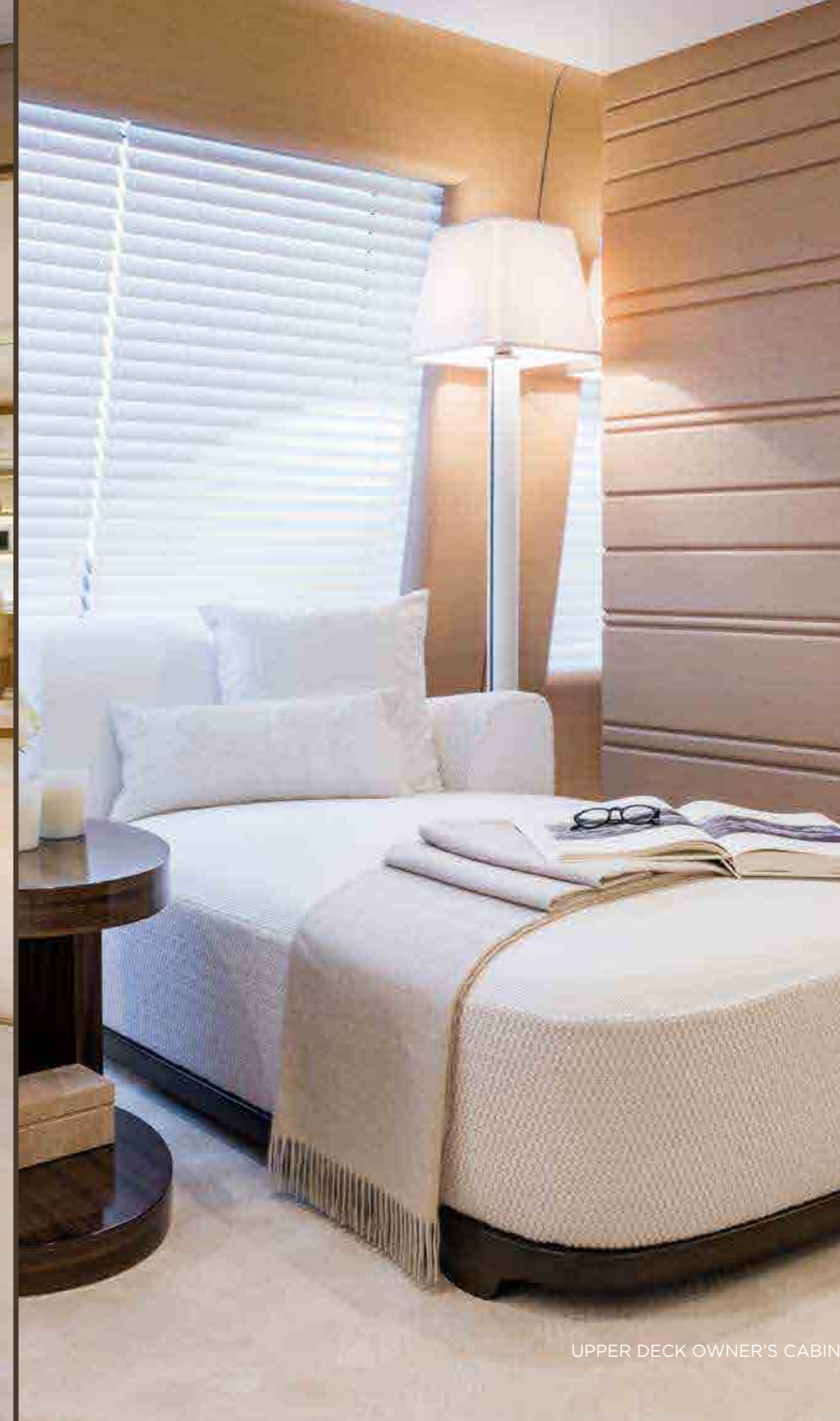
MAIN DECK OWNER'S STUDIO

LIGHTNESS





SMOOTHNESS

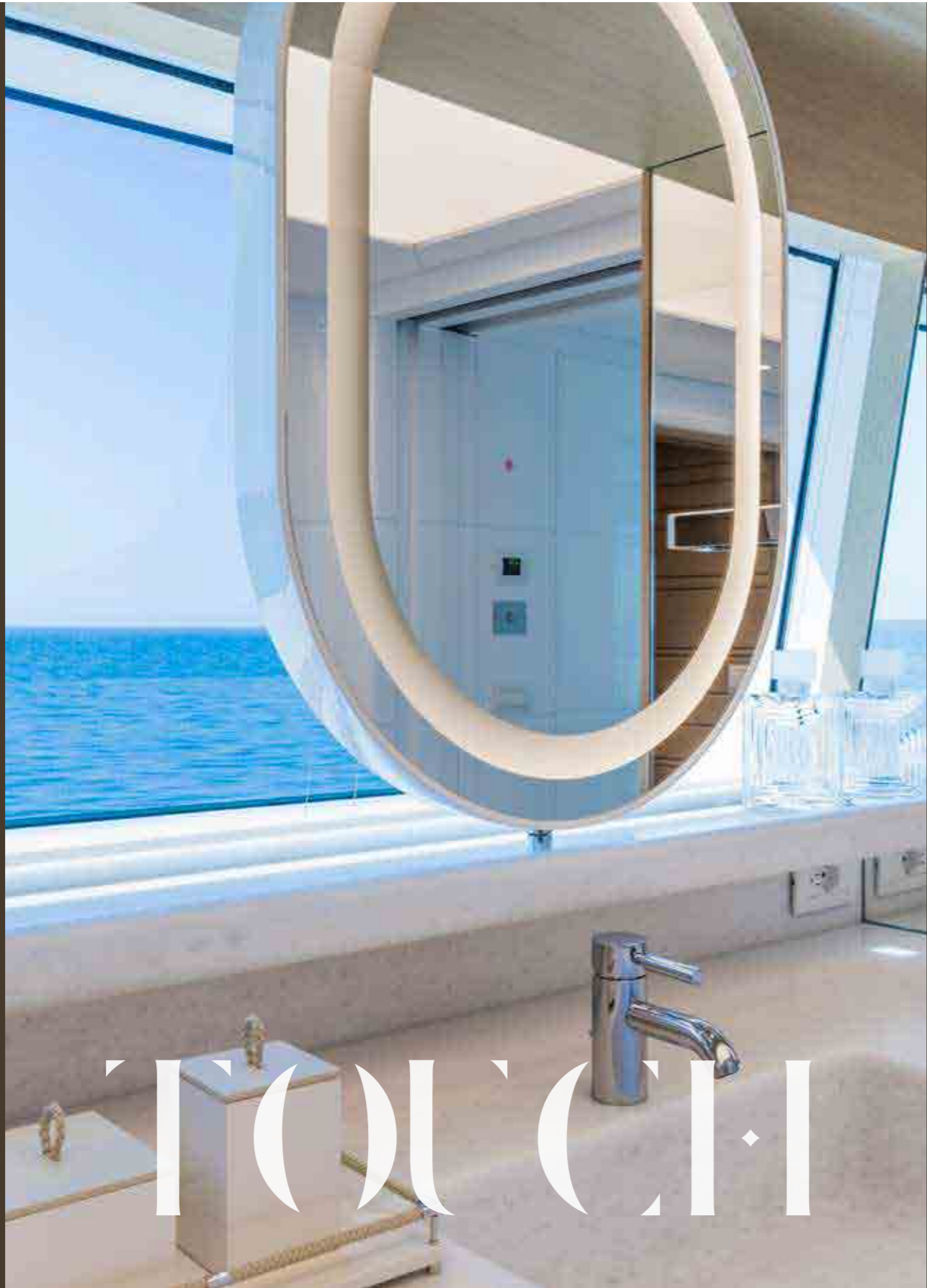


UPPER DECK OWNER'S CABIN





UPPER DECK OWNER'S CABIN



TOUCH



UPPER DECK OWNER'S DRESSING



WHEELHOUSE



SUN DECK

ON THE SUN DECK, FORM AND SUBSTANCE EXIST IN PERFECT HARMONY.

PURITY



SUN DECK CHILDREN PLAYROOM





SUN DECK GYM AREA

WELL-BEING



AND A FULLY EQUIPPED GYM AREA IS PERFECT FOR WELLBEING ENTHUSIASTS. LAST BUT NOT LEAST, THE OBSERVATION DECK IN THE BOW PROVIDES YET ANOTHER CHANCE TO SAVOUR THE TASTE OF BOUNDLESS FREEDOM THAT ONLY THE SEA CAN OFFER.



IN THE LOWER DECK
ARE FOUR DOUBLE CABINS
EQUIPPED WITH A PRIVATE
PANTRY AND FITTED
WITH EVERY COMFORT
FOR THE MOST
DEMANDING GUESTS.



LOWER DECK GUEST BEDROOM



LOWER DECK CHILDREN BEDROOM

DREAM





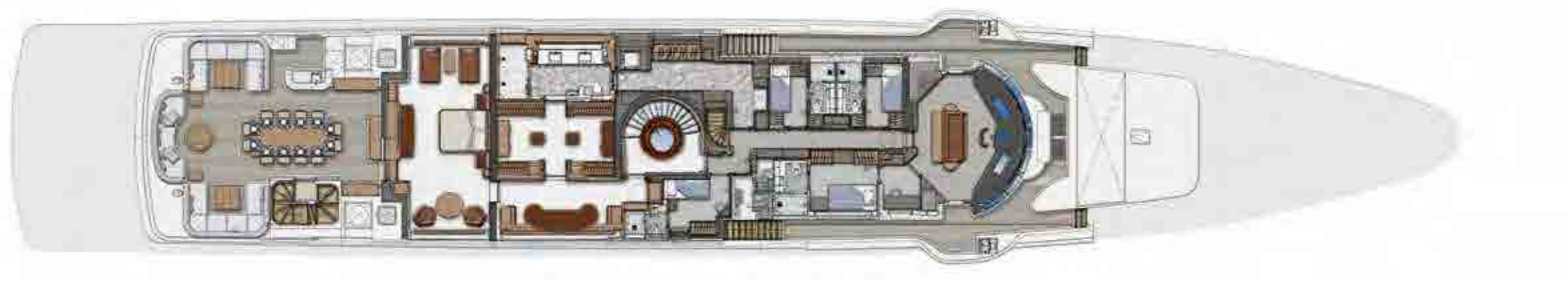
FB264 GENERAL ARRANGEMENTS



TOP DECK



SUN DECK



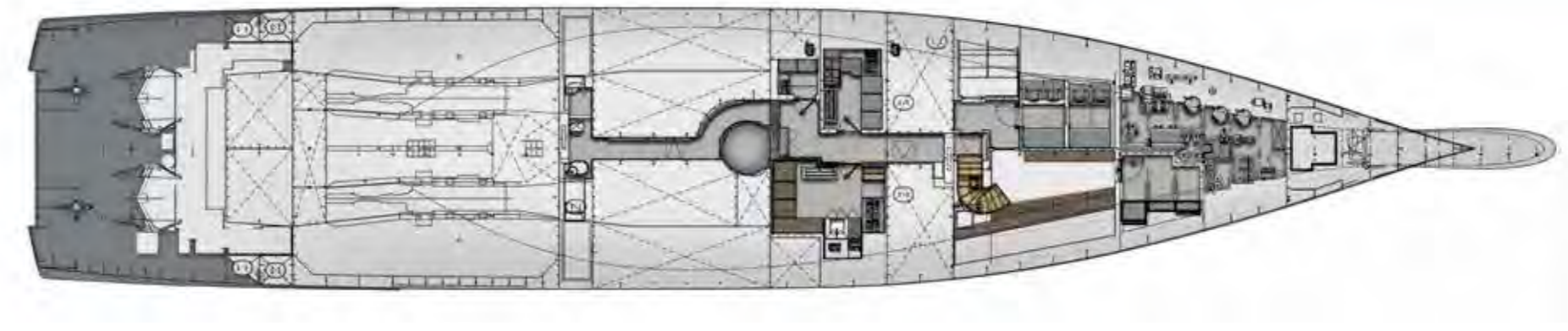
UPPER DECK



MAIN DECK



LOWER DECK



UNDER LOWER DECK

FB264 TECHNICAL SPECIFICATION



00. GENERAL

The vessel described in this specification is a motor yacht with a displacement hull, equipped with twin diesel engines, two screw propellers, two spade type rudders and one bow thruster. The hull is in steel while superstructure is in aluminium alloy.

Model FB264

Builder Azimut Benetti Spa, Benetti Shipyard

Via M. Coppino, 104 Viareggio (Lucca) - Italy Phone +39 05843821 - sales@benettiyachts.it - benettiyachts.it

Exterior designer Azimut Benetti S.p.A

Interior designer for Owner's and guests areas Francesca Muzio, FM Architettura d'Interni

Designer for all external decor Francesca Muzio, FM Architettura d'Interni

Interior designer for crew spaces, pantries, galley and wheelhouse Azimut-Benetti, Benetti Shipyard

DIMENSIONS AND CHARACTERISTICS

Length overall 63,5 mt - 208'

Beam max 10,80 mt - 35' 4"

Draft at full load from underside of keel 4,1 mt - 13' 5"

Gross Tonnage 1081 tons

Fuel tank capacity 115,000 l - 30,380 US gals

Fresh water capacity 28,000 l - 5,283 US gals

Accommodation for Owner & Guests

1 Owner's cabin apartment on Upper Deck

2 VIP cabins on Main Deck

1 Double cabin and 3 Twin cabins on Lower Deck

1 Children playroom on Sun Deck

Accommodation for Crew

1 Captain's cabin on Upper Deck

1 1st Officer's cabin on Upper Deck

1 Chief Engineer Cabin on Upper Deck

1 Owner's staff cabin (2 beds) on Upper Deck

5 Double cabins on Lower Deck

Max speed at half load displacement 15,5 knots

Cruising speed at 85% of maximum power at half load 15 knots

Range at 12 knots 4,750 Nautical Miles

CLASSIFICATION AND CERTIFICATES

Classification Society: American Bureau of Shipping

Class Notation: + A1€ COMMERCIAL YACHTING SERVICE, + AMS, ABCU, DPS-1

MCA LY2 Commercial Compliant

01. HULL AND SUPERSTRUCTURE CONSTRUCTION

Hull has been built using AH 36 High Strength Steel. Superstructure has been built using aluminum alloy AA5083 H321 plates and 6082 T6 alloy for extruded stiffeners and large extrusion on decks and sides.

02. OUTFITTING

Anchor windlasses 2 x Opem Sistemi vertical windlasses, each having a wildcat gypsy and capstan driven by an electric motor.

Anchors 2 x Wortelboer HHP (High Holding Power) anchors, made of galvanised steel, fully balanced, with swivel; weight in accordance with Classification Society requirements.

Chains

2 x Wortelboer U3 high tensile steel hot deep galvanised chains with stud link. Size and length will be according to Classification Society requirements.

Capstans

2 x Opem Sistemi electric capstans on the aft deck, capable to rotate in both directions, due to be operated with deck-mounted push buttons.

Cranes

2 x Tecnimpianti hydraulically operated travel cranes fitted in the aft garage for launching and recovery of main tender and wave runners. Maximum lifting capacity 2800 kg.

1 x Pincraft hydraulically operated crane integrated with the fore mast fitted in the bow area for launching and recovery of service tender. Maximum lifting capacity 2000 kg.

1 x Pincraft hydraulically operated crane fitted in the bow area for the launching and recovery of SOLAS rescue boat. Maximum lifting capacity 1000 kg.

Tenders

Tender Castoldi JT23 710 (length) x 2.68 (beam) x 1.24 mt (height max for storage)

Tender Castoldi JT27 8.34 (length) x 3.00 (beam) x 1.45 mt (height max for storage)

Rescue tender Castoldi JT14RB 4.25 (length) x 2.08 (beam) x 1.04 mt; passengers capability (SOLAS): No. 5+1

Shell doors

1 x Tecnimpianti hydraulically operated shell door fitted on the stern for launching and recovery of tenders and wave runners.

1 x Tecnimpianti hydraulically operated shell door fitted at lower deck level in the crew quarter (middle yacht) for goods embarkation.

1 x Tecnimpianti hydraulically operated hatch closing the SOLAS rescue boat bay.

Swimming platform

2 x Opacmare transformer swimming platforms integrated in the stern fixed rubbing strakes.

Gangway

1 x Tecnimpianti telescopic retractable, hydraulically operated stern gangway (made with painted aluminium structure), arranged to be part of the transom when closed:

- Max 6,5 length fully extended (3,7 from the aft end of fixed platforms)

- Net Walkway width equal to 600 mm

Guest Elevator

1 x Bertazzoni hydraulically operated lift serving lower, main, upper and sun decks. Safety working load 350 kg.

Food lift

2 x Bertazzoni food lift serving respectively lower deck and main deck, and main deck, upper deck, sun deck, max working load 60 kg/each.

03. AIR CONDITIONING SYSTEM

A Condaria air conditioning system has been installed, based on water chilling units, air handling units, exhaust fans and fancoils and serving all living quarters and interior spaces. There are two chilled water units: main and auxiliary.

The air conditioning system will be designed on the following parameters:

Summer conditions

External air 38°C, HR 90%

Internal air 22°C, HR 55%

Winter conditions

External air 0°C, HR 90%

Internal air 25°C, HR 50%

In the accommodation areas the air conditioning system will be based on treated air provided from the air handling units (UTA) in conjunction with local fan coils for reheating or overcooling.

04. ELECTRICAL SYSTEM

Main power system will be 380V AC 50Hz, 3ph for main equipment, and 220V AC 50Hz, 1 ph for small users. A 110V 60 Hz AC ring is provided for guest areas fedded by an ASEA 25kVA converter.

Shore power connection is assured by an ASEA AC 200 kVA converter fitted with seamless transfer device.

05. NAVIGATION, COMMUNICATION & ELECTRONICS

NAVIGATION SENSORS LIST

1.0 INTEGRATED NAVIGATION SYSTEM

1.1 RADAR SYSTEM

N 1 RADAR Consilium Selesmar SELUX Mod. T-250 ARPA 12U/6X

220/115 VAC, 12 KW, Composto da:

ARPA function

Interfaccia AIS, D/GPS, Gyro and speed Log

Keyboard, and trackball

6 ft. antenna with 30 mt. Antenna cable

N 1 UPS system

N 1 RADAR Consilium Selesmar SELUX Mod. T-250 ARPA 30U/12S

220/115 VAC, 30 KW, consisting of:

ARPA function

AIS interface, D/GPS, Gyro and speed Log

Keyboard, and trackball

12 ft antenna with 30 mt Antenna cable

1.2 ECOSOUNDER-LOG SYSTEM

N 1 Skipper Echosounder GDS 101, IMO approved with transducer

N 1 Echosounder sensor as back - up with switch and SOV

N 1 BEN Black Box LOG, IMO approved with transducer and sea valve

1.3 RX GPS SYSTEM

N 2 LEICA MX MARINE MX 512 DGPS (system for DPS1 dynamic position)

N 1 GPS switching

N 1 GT NMEA interface

N 1 GT NMEA back up

1.4 CARTOGRAPHY & CONNING SYSTEM

N 1 TRANSAS Cartography system:

Marine processor PC RS 6 TR

Keyboard/mouse

NS 4000 i Software package with (cartography excluded)

N 1 MFD - RIB 6 radar interface

N 1 Conning and Multi - View display, DUAL config. comprising of:

N 2 Processor unit

N 1 Mouse/keyboard

N 1 T MFD Software for the contemporary visualizing data of:

Slaving cartography licence (Chart excluded)

Heading	Water temperature	Air temperature
---------	-------------------	-----------------

Rate of turn	Wind speed	Air pressure
--------------	------------	--------------

Boat speed	Wind direction	RAI
------------	----------------	-----

Speed over ground	GPS	Multi view Processor Unit
-------------------	-----	---------------------------

Depth

1.5 WIND SYSTEM

N 1 WIND Multi NMEA SYSTEM

Comprising of:

Processor unit

N 2 ultrasonic YOUNG Wind sensor (no moving part) (system for DPS1 Dynamic position)

N 1 TPR 6.5" wind data display (Captain cabin)

N 2 NMEA multiplexer and distribution system

1.6 DYNAMIC POSITION SYSTEM

N 1 DP S 1 NAVIS DP 4000 system

Comprising of:

N 2 LEICA MX MARINE MX 512 DGPS (system included on point 1.3)

N. 2 YOUNG Wind sensor (no moving part) ultrasonic (system included on point 1.5)

N 2 C Plath GYROCOMPASS Navigat X MK 1 (system included on point 2.3)

N 2 Navis VRS/MRU

N 1 DP Operator Station comprising of:

19" touch screen LCD

Control panel 2000 Type

Control computer

OS junction box

Alarm speaker

DP Control Unit

UPS

DP Mode Selector Switch

N 1 IJS Operator Station comprising of:

19" touch screen LCD

Control panel 2000 Type

Control computer

OS junction box

Alarm speaker

IJS Control Unit

UPS

N 1 Thrusters interface

N 2 Rudders with feedback interface

N 2 Propulsion interface

2.0 INTEGRATED STEERING SYSTEM

2.1 AUTOPILOT SYSTEM

N 1 Autopilot NAVIS AP3000 (Wheelmark type) for connection to 24 V DC (18-36 V DC), comprising:

1 CanBus Display unit with transfective LCD display

1 Steering Control Unit (SCU)

1 Control Unit Box (CU)

2 Manuals in English

1 Touchscreen interface unit

2 FU-Mini Wheel (wings)

Feedback Unit

Feedback unit fitted with two potentiometers 1 set of adjustable

limit switches, for up +/- 45 °

Lever Linkage for rudder

angle indicator of up to +/- 70°

N 1 INTEGRATED TAKE OVER SYSTEM INTERFACE for 3 control stations

2.2 MAGNETIC COMPASS SYSTEM

N 1 Plath Jupiter O.H.

2.3 GYROCOMPASS SYSTEM

N. 2 C Plath GYROCOMPASS Navigat X MK 1 24 Vdc e 220 Vca,

(system for DPS1 dynamic position)

N 1 UDR for steering room

2.4 INTEGRATED STEERING CONNING

N 1 Touch control panel - LCD 15 " to manage the following:

Steering control panel	Speed
------------------------	-------

Rudder pump	Max speed
-------------	-----------

Steering mode selector	Average speed
------------------------	---------------

Take over	Daily Miles
-----------	-------------

Heading	Total miles
---------	-------------

Gyrocompass	Fuel Tank level
-------------	-----------------

Rudder position (RAI)	Current consumption
-----------------------	---------------------

Roll & Pitch	Hours left
--------------	------------

LOG	ME Rpm
-----	--------

TRIP Control

2.5 INTEGRATED WINGS SYSTEM

N 2 Control panel consisting of LCD 10" touch screen and push buttons to manage the following:

Steering takeover

Rudder position

Rudder command

CCTV

Engine Rpm display

Horn command

Search Ligth control

Wind - Speed - Depth

Compass repeater

3.0 COMUNICATION SYSTEM

3.1 VHF SYSTEM

N 1 RADIOTELEPHONE VHF SAILOR RT 6222 Simplex, DSC - classe A (radio room)

N 1 Remote control unit (Console)

N 1 RADIOTELEPHONE VHF SAILOR RT 6248 series (Crew mess)

N 1 Remote control unit - Mod. 6204 (garage)

3.2 SSB SYSTEM

N 1 RADIOTELEPHONE SSB SAILOR 6000 – 150 WATT con DSC MF

N 2 SSB Antenna TX 700 CAN complete

3.3 SAT. COM. SYSTEM

N 1 SAILOR SAT COM STD C GMDSS compliance

N 2 SEATEL V-SAT 5012.33 provider free BUC 16w (76 inch tuned radome)

N 1 Seatel Dual Arbitrator switch

N 2 SAILOR Fleet BB FB-500

3.4 CELL PHONE SYSTEM

N 2 Cellphone GSM Telular SX 6

3.5 INTERCOM SYSTEM

N Integrated Intercom Consisting of:

N 1 BB processor unit & Software

N 10 station for the following:

Wheelhouse	Wings (x2)
Engine Control room with headphones (engine command post)	Bow mooring post
Engine room (slave of ECR)	Stern mooring post (x2)
Lazaret emergency steering station	Emergency helm/rudder station

4.0 SAFETY SYSTEM

4.1 EPIRB

N 1 EPIRB SAILOR 406

4.2 RADAR REFLECTOR

N 2 RADAR REFLECTOR SAILOR

4.3 RTX PORTABLE VHF

N 3 SAILOR SP 3520 GMDSS compliance

N 4 Commercial Portable VHF

4.4 METEO RECEIVER

N 1 RICEVITORE NAVTEX FURUNO NX 700 - B

4.5 SISTEMA AIS

N 1AIS system for integration with Cartography system

4.6 SSAS SYSTEM

N 1 SSAS SAILOR System L RIT compliance

4.7 THERMAL CAMERA SYSTEM

N 1 Thermal camera Flir Model M625L

4.8 BNWAS SYSTEM

N 1 BNWAS system Furuno integrated on WHC system

For N. 4 reset station (Wheelhouse, Captain cabin, Crew-Mess, 1st. Officer)

4.9 TENDER TRACKING SYSTEM

N 1 Tender tracking System Seetrac comprising of:

N 1 Transas NS4000 License

N 1 NBT license

N 1 Main Vessel Transponder KIT (Base Station Transponder)

N 3 Tender Transponder KIT (Tender Transponder station)

N 3 Transducer for Tender

N 2 Jet-Ski transponder KIT (Jet-Ski Transponder station)

AUDIO VIDEO

LOWER DECK

N 02 LAUNDRY

N 2 FUSION car stereo MS-IP700 marine ipod dock

N 4 B&W speakers CCM665

N 04 DOUBLE/TWIN GUEST CABINS

N 2 SONY led tv 46” KDL-46W905

N 2 SAMSUNG led tv 40” F8000

N 8 B&W speakers CCM665

CREW MESS + DINETTE

N 1 SAMSUNG led tv 40” F8000

N 1 SAMSUNG led tv 22” UE-22F5000

N 2 B&W speakers CCM665

CREW + ENGINEER CABINS

N 5 FUSION car stereo MS-IP700 marine ipod dock

N 10 B&W speakers CCM665

GARAGE/BEACH AREA

N 1 SONY car stereo CDXHR910

N 4 APART waterproof speakers 8”

MAIN DECK

MAIN SALOON

N 2 SONY led tv 46” KDL-46W905

N 1 B&W subwoofer ASW608

N 4 B&W speakers CCM665

N 1 B&W speakers CCM362

DINING ROOM

N.2 B&W speakers CCM665

BAR LOBBY

N.2 B&W speakers CCM665

AFT COCKPIT

N 5 APART waterproof speakers 8”

N 1 B&W subwoofer ASW608

GALLEY

N 2 B&W speakers CCM665

VIP OFFICE

N 2 B&W speakers CCM665

N 2 VIP CABINS

N 2 SAMSUNG led tv 55” F8500

N 4 B&W speakers CCM665

UPPER DECK

AFT COCKPIT & DINING TABLE

N 1 PANASONIC outdoor video 47”

N 1 SAMSUNG led tv 60” UE-60F7000

N 4 APART waterproof speakers 8”

OWNER'S OFFICE

N 2 B&W speakers CCM665

OWNER'S CABIN

N 1 SAMSUNG led tv 60” UE-60F7000

N 1 B&W subwoofer ASW608

N 5 B&W speakers CCM665

OWNER'S BATHROOM

N 2 APART waterproof speakers 5”

DRESSING

N 2 B&W speakers CCM665

CAPTAIN'S CABIN

N 1 SAMSUNG led tv 40” F8000

N 1 DENON A/V sintho ampli AVR 2313 black

N 2 B&W speakers CCM665

CAPTAIN'S OFFICE

N 2 B&W speakers CCM665

WHEELHOUSE SHIP OFFICE

N 2 B&W speakers CCM665

FORE DECK SOFA

N 2 APART waterproof speakers 8”

OWNER STAFF CABIN

N 1 SAMSUNG led tv 22” UE-22F5000

N 1 DENON A/V sintho ampli AVR 2313 black

N 2 B&W speakers CCM665

N 2 OFFICIAL CABIN

N 2 SAMSUNG led tv 22” UE-22F5000

N 4 B&W speakers CCM665

N 2 DENON A/V sintho ampli AVR 2313 black

SUN DECK

AFT SUN BED-POOL & COCKPIT

N 6 APART waterproof speakers 8”

CHILDREN PLAY ROOM

N 1 SAMSUNG led tv 60” UE-60F7000

N 1 B&W subwoofer ASW608

N 5 B&W speakers CCM665

GYM AREA

N 4 B&W speakers CCM665

OBSERVATION DECK

N 1 VIVITECK D5380U DLP 1080p + Optical zoom wide angle

N 1 STEWART screen

N 1 B&W subwoofer ASW608

N 5 B&W speakers CCM665

UNDER LOWER DECK A/V RACKS

N 4 DENON A/V sintho amplifier AVR-2313 (Guest Cabins)

N 4 CROWN 4 CH amplifier CTS4200 (Guest Cabins)

N 1 CROWN 4 CH amplifier CTS4200 (Crew Mess)

N 1 DENON dvd blu-ray disc player DBT-3313UD (Crew Mess)

N 1 DENON A/V SINTHO AMPLIFIER AVR-2313 (Crew Mess)

N 1 DENON dvd blu-ray disc player DBT-3313UD (AVR)

N 1 DENON A/V sintho amplifier AVR-4520 (Main Saloon)

N 1 DENON dvd blu-ray disc player DBT-3313UD (Main Saloon)

N 1 CROWN 8 CH amplifier CTS8200 (Main Saloon, Dining Room)

N 1 CROWN 4 CH amplifier CTS4200 (Bar Lobby Main)

N 1 DENON A/V sintho amplifier AVR-2313 (Main Aft Cockpit)

06. MAIN MACHINERY

Main engines 2 x MTU 12V 4000 M53 1380 kW @ 1800 rpm

Gear boxes 2 x ZF 4661

Gear boxes 2 x Rubber desing shaft line, oil lubricated and fitted with thrust bearing and flexible coupling

Generators 3 x Caterpillar C6.6 143 ekW + emergency generator C4.4 86 ekW

Propellers 2 x Detra fixed pitch propellers, five bladed

Watermakers 2 x Idromar reverse osmosis watermakers 13,000 l/day each (26,000 l/day in total)

Bow thruster 1 x NAIAD Electric motor driven, 160 ekW

Stabilisers system 2 x Quantum XT fin stabilizers

07. INTERIORS

Decor

VENEERS for wall panellings and fixed furnitures Matt bleached oak

LAQUERS for wall panellings and ceiling panels

Glossy white laquer

Matt white laquer

STONES

Sky White “leather” finished

Sky White “raw” finished

Silk Georgette “leather” finished

Silk Georgette “bamboo” finished

Black Meteorite “leather” finished

Jungle Black “glossy” finished

White Sivec “leather” finished

MIRRORS and GLASSES

White back painted glass

Clear mirrors

METALS

Polished chrome finishes for faucets and bathroom accessories

Equipment

GYM EQUIPMENT

2 TECHNOGYM Personal Run 700

1 TECHNOGYM Personal Recline 700

1 wellness rack + 1 wellnesspad + 2 wellness balls

DOMESTIC APPLIANCES

ULD Family laundry

3 x washer MIELE PW6065 PLUS

3 x drier MIELE PT7136 PLUS

1 x rolling iron MIELE HM21-100

ULD Crew corridor

1 x iron board

1 x steam iron

ULD Crew and guest laundry

1 x rolling iron MIELE HM21-100

3 x washer MIELE PW6065 PLUS

3 x drier MIELE PT7136 PLUS

LD Guest Lobby

1 x minifridge VITRIFRIGO LT 75 BAR

LD Crew Mess pantry

1 x coffee machine PHILIPS SAECO XELSIS HD 8944/18

1 x microwave MIELE M8201-1

1 x dishwasher MIELE PG8052 SCI1

1 x fridge MIELE KF 12823 SD-I

MD Main Saloon

1 x fridge MIELE K621 UI-1

MD Pantry

1 x coffee machine PHILIPS SAECO XELSIS HD 8944/18

1 x ice maker HOSHIZAKI IM-65 WLE

1 x glass-washer MIELE G7856

1 x fridge MIELE K621 UI-1

MD Galley

1 x dishwasher MIELE PG 8052 SCI

1 x dishwasher MIELE G7856

1 x garbage macerator INSINK ERATOR EVOLUTION 100

1 x convection oven MIELE H5981 BP Code 22.5981.31MAR

1 x fridge SUBZERO ICBBI-36-R

1 x fridge SUBZERO ICBBI-36-R-G

1 x freezer SUBZERO ICBBI-36-F

3 x induction plate MIELE KM 418

1 x fridge VITRIFRIGO It 75

2 x convection oven MKN – CPE 61E

1 x hood, model: custom

1 x microwave MIELE M8201-1

UD aft Cockpit

1 x fridge MIELE K621 UI-1

1 x ice maker HOSHIZAKI IM-65 WLE

1 x coffee machine PHILIPS SAECO XELSIS HD 8944/18

1 x warm cellar, model: custom

UD Owner's Laundry

1 x washer MIELE PW6065 PLUS LP

1 x drier MIELE PT7136 PLUS

UD Lobby

1 x fridge MIELE KF 12823 SD-I

1 x coffee machine PHILIPS SAECO XELSIS HD 8944/18

SD aft external area

1 x coffee machine PHILIPS SAECO XELSIS HD 8944/18

1 x fridge MIELE K621 UI-1

1 x ice maker HOSHIZAKI IM-65 WLE

SD Children pantry

1 x fridge MIELE K621 UI-1

SD Lobby

1 x fridge MIELE K621 UI-1

Top Deck

1 x fridge MIELE K621 UI-1



HISTORY

BENETTI IS ONE OF THE OLDEST BUILDERS OF LUXURY MOTOR YACHTS IN THE WORLD. ESTABLISHED BY LORENZO BENETTI IN 1873, THE COMPANY BEGAN LIFE BUILDING WOODEN BOATS USED FOR LOCAL AND INTERNATIONAL TRADE. AFTER THE DEATH OF LORENZO, HIS TWO SONS GINO AND EMILIO TOOK OVER THE MANAGEMENT OF THE SHIPYARD. THEY CHANGED ITS NAME TO FRATELLI BENETTI AND QUICKLY BUILT UP A REPUTATION THAT EXTENDED BEYOND THE MEDITERRANEAN.

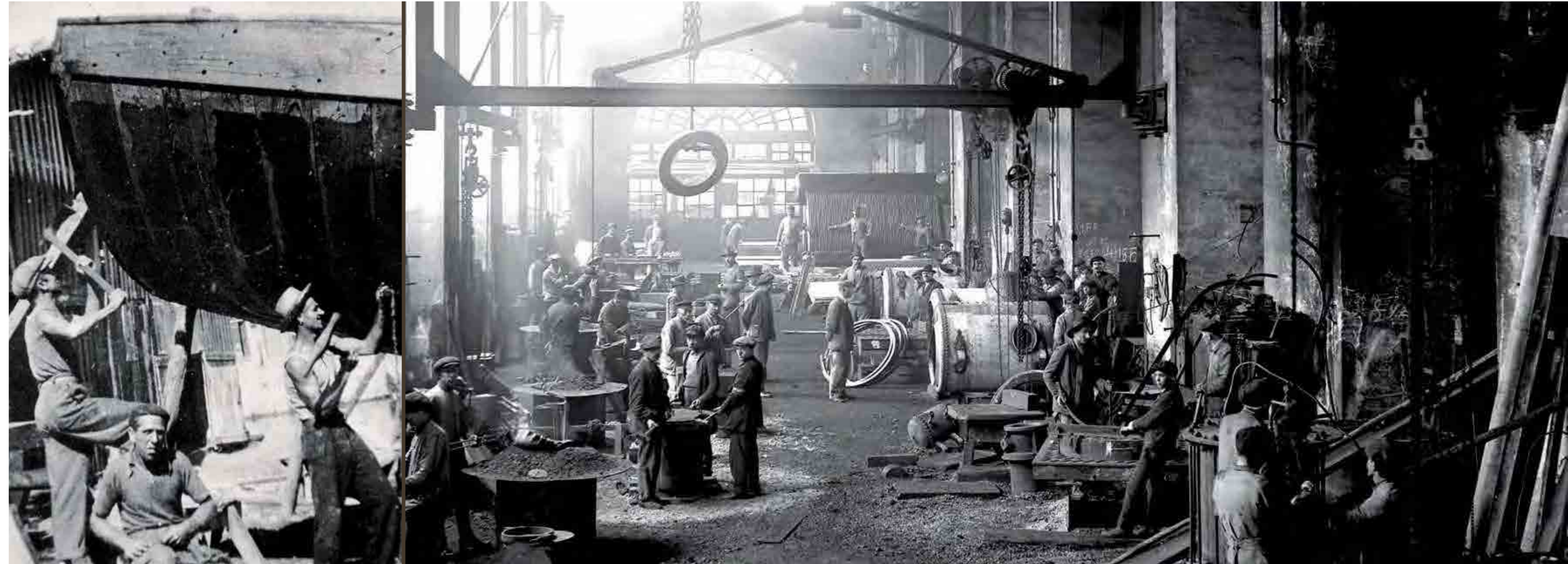
AFTER THE SECOND WORLD WAR, WITH THE DISAPPEARANCE OF COMMERCIAL SAILING VESSELS BUILT FROM WOOD, BENETTI CHANGED DIRECTION AND BEGAN PRODUCING PLEASURE CRAFT MADE FROM STEEL. THEN IN THE EARLY 1960S THE SHIPYARD PRODUCED ITS FIRST LUXURY MEGA YACHTS. SINCE 1980 THE FLEET HAS INCLUDED BIG MOTOR YACHTS IN THE 30 TO 60 METER RANGE AND BEYOND, NOT LEAST THE FAMOUS 86-METER 'NABILA'.

IN 1985 THE SHIPYARD WAS ACQUIRED BY THE CELEBRATED TURIN-BASED BOAT BUILDER AZIMUT SPA, WHICH BROUGHT IN NEW MANAGEMENT AND TRANSFORMED BENETTI INTO THE MODERN, TECHNOLOGICALLY ADVANCED REALITY WE KNOW TODAY: A FORWARD-LOOKING AND INNOVATIVE SHIPYARD, BUT ALSO ONE THAT PROUDLY RETAINS ITS TRADITIONAL VALUES OF EXPERIENCE, SKILL AND A PASSION FOR FINE CRAFTSMANSHIP.

AZIMUT BENETTI GROUP IS WHOLLY PRIVATELY OWNED, AS IT HAS BEEN FROM THE OUTSET.

THE GROUP'S FINANCIAL SOLIDITY AND INDEPENDENCE, BUILT OVER MORE THAN 40 YEARS IN BUSINESS, ARE KEY FACTORS IN ESTABLISHING CLOSE RELATIONSHIPS OF TRUST WITH CLIENTS.

TODAY AZIMUT BENETTI GROUP PROVIDES GUARANTEES OF STRENGTH AND STABILITY, BOTH PARTICULARLY IMPORTANT FACTORS FOR MEGA YACHT CLIENTS INVOLVED IN LONG TERM CONSTRUCTION PROJECTS.



SHIPYARDS

VIAREGGIO

BENETTI HAS HAD ITS HEADQUARTERS IN VIAREGGIO, IN VIA COPPINO, SINCE 1873. THE TWO PRODUCTION FACILITIES HERE, DARSENA LUCCA AND DARSENA ITALIA, ARE EQUIPPED TODAY WITH THE LATEST TECHNOLOGY FOR BUILDING CLASS RANGE YACHTS FROM 93 UP TO 145 FOOT. DARSENA ITALIA CAN PRODUCE FOUR 35-70 METER YACHTS CONCURRENTLY AND CAN ALSO BOAST A DRY DOCK AND A HELIPAD. DARSENA LUCCA CAN BUILD THREE YACHTS AT THE SAME TIME UP TO 42 METERS IN LENGTH. A THIRD, MORE RECENT, FACILITY INCREASES PRODUCTION CAPACITY BY SIX MORE YACHTS.

LIVORNO

PURCHASED IN 2004, THE LIVORNO SHIPYARD COVERS A SURFACE AREA OF ABOUT 200,000 SQM. INHERITED FROM THE ILLUSTRIOUS CANTIERE ORLANDO, IT HAS BEEN CONVERTED BY BENETTI INTO A MODERN PRODUCTION FACILITY WHERE 12 CUSTOM STEEL AND ALUMINIUM MEGA YACHTS CAN BE BUILT AT THE SAME TIME. THE LIVORNO SHIPYARD ALSO OFFERS SUPER-YACHT REPAIR SERVICES, WITH A PRIVATE DOCK WHERE BOATS UP TO 80 METERS IN LENGTH CAN MOOR. AS THE MEDITERRANEAN'S LARGEST AND MOST UP-TO-DATE REFIT CENTRE, IT IS SET TO PLAY A KEY ROLE IN PLEASURE CRAFT DEVELOPMENT IN ITALY AND EUROPE AS A WHOLE.

FANO

THE FANO SHIPYARD JOINED AZIMUT BENETTI GROUP IN JULY 2002 FOLLOWING THE MERGER WITH CANTIERI MOSCHINI, OF WHICH IT HAD BEEN THE MAJORITY SHAREHOLDER SINCE 1998. THE SITE IN ITALY'S LE MARCHE REGION IS TODAY REGARDED AS AN INTERNATIONAL CENTRE OF EXCELLENCE IN THE MOULDING AND LAMINATION OF YACHTS BUILT FROM COMPOSITE MATERIALS. THE 34,000 SQM PRODUCTION FACILITY, OF WHICH 12,000 SQM UNDER COVER, EMPLOYS A HIGHLY QUALIFIED WORKFORCE OF SPECIALISTS.





VIAREGGIO

Italy

Via Michele Coppino, 104
55049 - Viareggio (Lucca)

P: +39 0584 3821
F: +39 0584 39623
info@benettiyachts.it

LIVORNO

Italy

Via Edda Fagni, 1
57100 - Livorno

P: +39 0586 415600
F: +39 0586 834053
info@benettiyachts.it

FT LAUDERDALE

USA

Benetti Americas
1535 SE 17th Street - Suite B 101
Ft Lauderdale, FL 33316, USA

P: +1 (954) 687 9436
info@benettiamericas.com

DUBAI

UAE

Jumeirah Business Center 2
JLT, Dubai

M: +971 5555 24 852
F: +971 4 439 0185
nabil.eljammal@benettiyachts.it

HONG KONG

Asia

Benetti Asia Ltd
14/F China Underwrite's Centre,
88 Gloucester Road,
Wan Chai - Hong Kong

M: +852 51900112
F: +852 3973 8500
natalie.ye@benettihk.com

THIS BROCHURE SHALL NOT CONSTITUTE IN ANY CIRCUMSTANCE WHATSOEVER ANY OFFER BY THE SHIPYARD TO ANY PERSON OR BE INCORPORATED INTO ANY CONTRACT. ANY AND ALL INFORMATION CONTAINED IN THIS BROCHURE, INCLUDING WITHOUT LIMITATION ALL TECHNICAL DATA, PERFORMANCE, ILLUSTRATIONS AND DRAWINGS, ARE JUST A ROUGH GUIDE AND THEY ARE NOT CONTRACTUAL AND REFER TO STANDARD MODELS OF MOTOR YACHTS BUILT BY THE SHIPYARD AND HAVE BEEN UPDATED BY THE SHIPYARDS AS OF THE DATE OF ISSUE OF THE BROCHURE. THEREFORE THE ONLY INDICATIONS BINDING ON THE SELLER ARE CONTAINED SOLELY IN THE SALE AGREEMENT AND IN THE RELEVANT SPECIFIC MANUAL. THIS BROCHURE IS BASED ON INFORMATION AVAILABLE AT THE DATE OF ISSUE. NOTWITHSTANDING ALL EFFORTS TO ENSURE ACCURACY, THE INFORMATION CONTAINED IN THE BROCHURE MAY NOT COVER ALL DETAILS, TECHNICAL-COMMERCIAL CHANGES SUBSEQUENT TO THE DATE OF ISSUE, NOR ACCURATELY FORESEE OR REPORT ALL POSSIBLE SCENARIOS.

DISPLAYS, PHOTOS, SCHEMES, DESIGNS OR EXAMPLES CONTAINED IN THIS BROCHURE ARE SOLELY AND EXCLUSIVELY REPRODUCED TO HIGHLIGHT THE INFORMATION CONTAINED. DUE TO THE DIFFERENT CHARACTERISTICS OF EACH YACHT, THE SHIPYARD DECLINES ANY AND ALL LIABILITY FOR ANY USE THEREOF ON THE BASIS OF THE INFORMATION CONTAINED IN THIS BROCHURE.

CREDITS | PHOTOGRAPHY: BENETTI SHIPYARD ARCHIVE AND PHOTOGRAPHERS GIULIANO SARGENTINI & ALBERTO COCCHI

CONCEPT & DESIGN: DOLCI ADVERTISING

AZIMUT-BENETTI SPA VIA M. COPPINO, 104 - VIAREGGIO (LUCCA) ITALY - PHONE +39 05843821 SALES@BENETTIYACHTS.IT BENETTIYACHTS.IT

BENETTIYACHTS.IT

a brand of
AZIMUT | BENETTI
GROUP