



BUILDER	Feadship
LOA	46.60m / 152' 11"
BEAM	9.00m / 29' 6"
DRAFT	2.37m / 7' 9"
GT	423
YEAR	2015
REFIT	2022
ACCOM	12 Guests in 6 Cabins
CREW	11
SPEED	12.00 knots cruising
PRICE	€31,500,000 EUR EU VAT paid

KISS

















































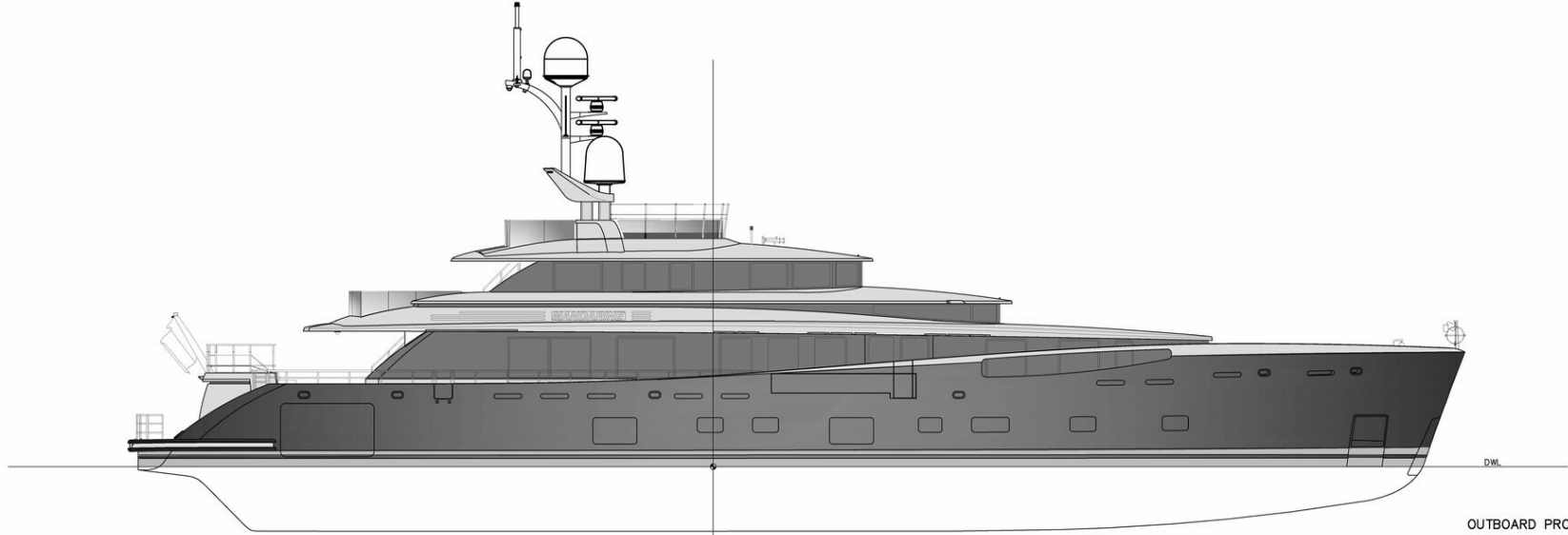




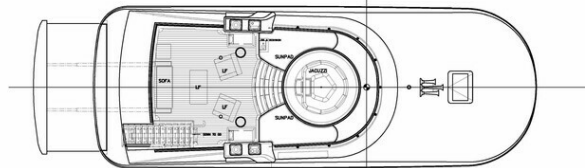






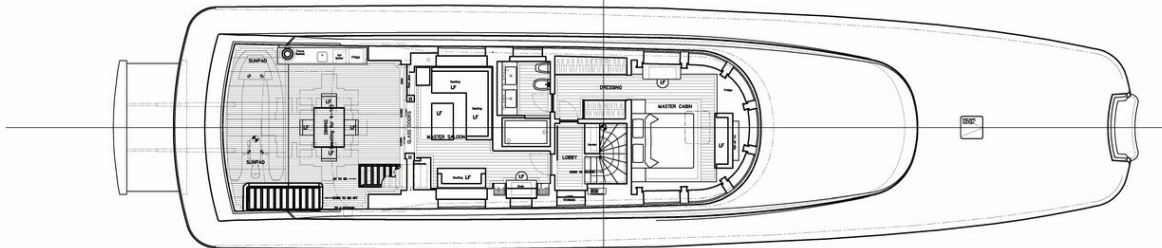


OUTBOARD PROFILE

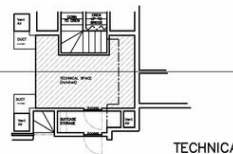


SUNDECK PLAN

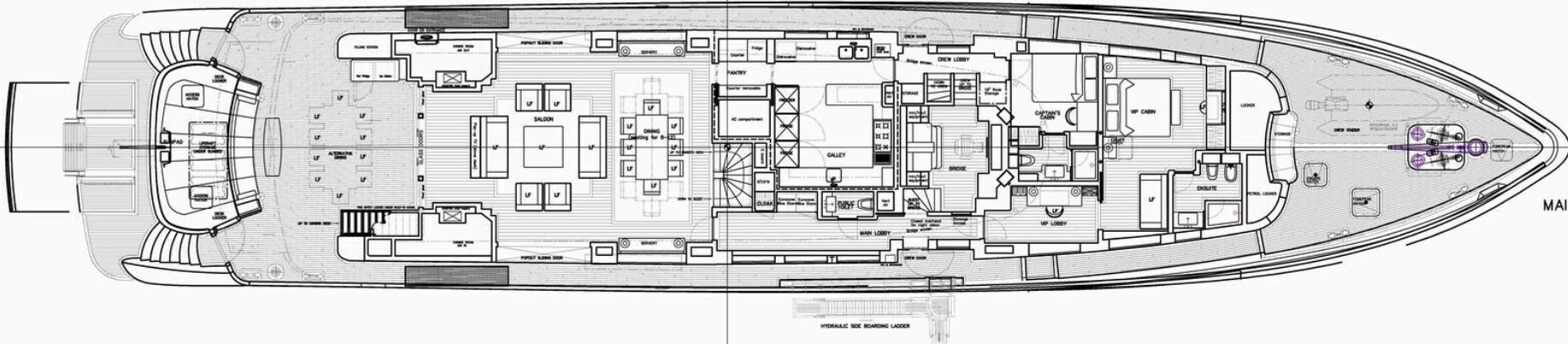
55 54 53 52 51 50 49 48 47 46 45 44 43 42 41 40 39 38 37 36 35 34 33 32 31 30 29 28 27 26 25 24 23 22 21 20 19 18 17 16 15 14 13 12 11 10 9 8 7 6 5 4 3 2 1



OWNER'S DECK PLAN



TECHNICAL SPACE PLAN



MAIN DECK PLAN



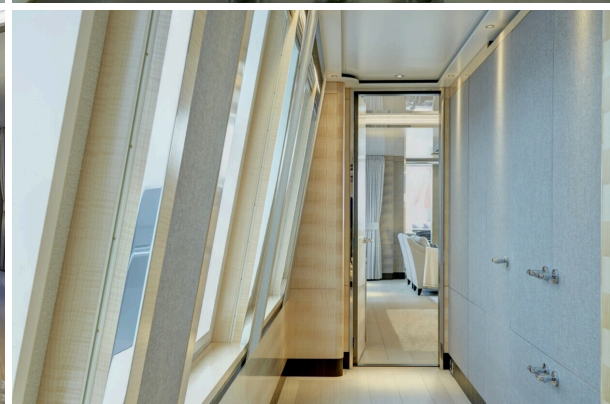
LOWER DECK PLAN



Kiss

CONTENTS

- 1 MAIN CHARACTERISTICS
- 2 DIMENSIONS
- 3 SPEED & RANGE UNDER POWER
- 4 CAPACITIES
- 5 ACCOMMODATION
- 6 MECHANICAL EQUIPMENT
- 7 NAVIGATION EQUIPMENT
- 8 COMMUNICATION EQUIPMENT
- 9 DECK EQUIPMENT
- 10 ENTERTAINMENT EQUIPMENT
- 11 GALLEY & LAUNDRY EQUIPMENT
- 12 SECURITY & SAFETY EQUIPMENT
- 13 TENDERS & WATERSPORTS EQUIPMENT
- 14 MAINTENANCE & REFIT



1. MAIN CHARACTERISTICS

TYPE	Displacement Motor Yacht
BUILDER	Feadship de Vries
HULL NO.	689
IMO NUMBER	1012672
NAVAL ARCHITECT	Dubois Naval Architects
EXTERIOR DESIGN	Dubois Naval Architects
INTERIOR DESIGN	Redman Whiteley Dixon
YEAR	2015
REFIT	2022
CLASSIFICATION	Built to Lloyd's 100A1 SSC Yacht Mono, G6 LMC UMS
CONSTRUCTION	Aluminium Hull & Superstructure Teak Decks
CREW	Up to 11
FLAG	Malta
ENGINES	1 x 895 kW (1,200 Hp) Caterpillar C32
GT	423
NT	126
DISPLACEMENT	Approx. 362 tons fully loaded

2. DIMENSIONS

LOA	46.60m / 152' 11"
LWL	44.27m / 145' 3"
BEAM	9.00m / 29' 6"
DRAFT	2.37m / 7' 9" max

3. SPEED & RANGE UNDER POWER

MAXIMUM SPEED	16.00 knots
CRUISING SPEED	12.00 knots
ECONOMICAL SPEED	10.00 knots
RANGE	3,700nm at 12.00 knots 5,200nm at 10.00 knots

4. CAPACITIES

ACCOMMODATION	12 x Guests in 6 cabins
CREW	11 x Crew in 5 cabins
FUEL	51,000 litres / 13,473 US gallons (excl. overflow tank)
FRESH WATER	16,000 litres / 4,227 US gallons
LUBE OIL	1,500 litres / 396 US gallons
DIRTY OIL	1,400 litres / 370 US gallons
GREY WATER	12,000 litres / 3,170 US gallons
BLACK WATER	1,000 litres / 264 US gallons
FUEL DAY TANK	430 litres / 113 US gallons
BILGE WATER	2,540 litres / 671 US gallons

5. ACCOMMODATION

OWNER'S UPPER DECK	1 x Queen size bed Master salon with double sliding door to the aft deck Master cabin with bathroom and dressing area
MAIN DECK	Open aft deck with open staircase leading up to the owner's deck and double sliding door arrangement to the main deck salon

	Main deck salon with open dining area forward and staircase to guest area lower deck and to owner's deck
	Port and starboard sliding doors from main salon to open side decks
	Galley
	Main deck lobby with powder room
	Raised pilothouse
	Captain's cabin with en-suite bathroom
VIP MAIN DECK CABIN	VIP Queen-size bed cabin with separate lobby / office and en-suite bathroom.
LOWER DECK	Swim platform with a platform that can be lowered into the sea, two stairways to main deck and transom door to lazarette
	Crew accommodation with crew mess, three bed staff cabin, laundry
	Engineer's cabin and one twin crew cabin port forward and one three bed cabin starboard forward.
LOWER DECK CABINS	1 x Twin cabin (converts to a Queen size) port forward
	1 x Double cabin – Queen size starboard forward
	1 x Twin cabin (with an additional Pullman berth) port aft
	1 x Twin cabin in bunk configuration (children's cabin) to starboard aft

6. MECHANICAL EQUIPMENT

ENGINES	2 x Caterpillar C32 895kW (1200 HP)
----------------	-------------------------------------

ENGINE HOURS	As of June 2022: Port: 7,486 Stbd: 7,482
GEARBOX	2 x ZF 3000 (Marine type reserve reduction)
SHAFT & PROPELLER	2 x Open, fixed pitch stainless with 150dm
RUDDERS	2 x Detachable balance rudders
STEERING SYSTEM	Promac Stuwa NCAC 17.5
STABILISERS	Quantum Zero Speed 1800 XT Fins
BOW THRUSTER	ZF 80kW Electrical Bow thruster
GENERATORS	2 x 125kW CAT C6.6 Marine
GENERATOR HOURS	As of June 2022: Port: 13,779 – rebuilt at 12,960 – 819h since rebuild Stbd: 13,518 – rebuilt at 12,846 – 672h since rebuild
ELECTRICITY	400 V 50Hz 3-Phase and 230 V Single Phase Integrated Power Management System
SHORE POWER	Seamless Transfer 250A Cable Reel 30m
AMS	RH Marine
MAIN ENGINE START	24V Electric
GENERATOR START	24V Electric
CHARGERS	Master Volt
CONVERTERS	2 x 75kVA Asea
EMERGENCY	Batteries & UPS
HYDRAULICS	Hydromar
AIR CONDITIONING	Heinen & Hopman with closed circuit chilled water system with fan coils 2 x H & H Fresh Air units

WATER MAKER	2 x Idromar MC5 Duplex
TOILET SYSTEM	Vacu flush
SEWAGE SYSTEM	HMSA System w/ capacity of 1,000 litres
SEWAGE TREATMENT	HMSA MDS III System w/ capacity of 1,000 litres
GREY WATER FILTER UNIT	HMSA System ACF-M002
FUEL CENTRIFUGE	GEA Westfalia OTC 2-03-137
FUEL SEPARATOR & FILTERS	GEA Westfalia
GREASE SEPARATOR	HMSA System
OIL WATER SEPARATOR	Boss 2.2T 107 YM
AIR COMPRESSER	Kaeser Kompressoren
GALVANIC PROTECTION	Cathelco
FRESH WATER FILL	Spot Zero SZ 3000

7. NAVIGATION EQUIPMENT

MAGNETIC COMPASS	Kelvin Hughes
GYRO COMPASS	Sperry Navigat MK2
AUTOMATIC PILOT	RH Marine
ECHO SOUNDER	Furuno
RADAR	2 x Sperry Marine X-Band
AIS	1 x SAAB R5 AIS Receiver / Transceiver
SARTS	2 x Jotron
DGPS	1 X SAAB R5 DGPS
GPS	Furuno
ECDIS	1 x RH Marine Integrated Bridge System
CHART PLOTTER	RH Marine ECDIS
NAVTEX	Furuno
LOG	Sperry Naviknot
WEATHER INSTRUMENTS	1 x Vaisala WXT520
SEARCHLIGHTS	ACR RCL 600

CAMERA(S)	Xprotect / Husky
------------------	------------------

8. COMMUNICATION EQUIPMENT

SATCOM	1 x Thrane & Thrane mini C
VHF	2 x Furuno FM8900S VHF
VHF PORTABLE	2 x GMDSS + batteries 2 x ICOM
SSB	1 x Sailor MF / HF 6301
VSAT	2 x Orbit AL-7103 Mk2 Antenna
SAT C	Thrane & Thrane 6006
NAVTEX	Furuno NX-700
LOUDHAILER	Phonetec CIS 3100
TELEPHONE SYSTEM	Cisco IP Based throughout including VOIP and GSM outbound calls
EXT COMMS	Pepe Wave 4 Sim card 2 x 4G Integrated Antenna
COMPUTER	Engineers computer (iMac 2015) in control room Bridge computer Lenovo 330S 2 TB Hard Drive
PRINTERS	Laser printer in Wheelhouse Inkjet printer in Wheelhouse Inkjet printer in Control Room Inkjet printer in Crew Mess

9. DECK EQUIPMENT

ANCHOR WINDLASSES	2 x Muir Electric Vertical Mounted
AFT WARPING CAPSTANS	2 x Muir electric
ANCHORS	2 x 'Pool' galvanized bow anchors 360kg

ANCHOR CHAINS	1 x Aluminium Fortress Anchor stern
BOAT CRANE & DAVITS	2 x 137.5m 19mm studlink galvanised
PASSERELLE	Carbon Spar for Owner's deck aft (removable) Akerboom folding Passerelle with removable handrails
SIDE BOARDING LADDER	Akerboom hydraulic
JACUZZI	1 x 6-people
SWIMMING PLATFORM	Opacmare Transformer series retractable swim platform with 8 stairs w/ lifting capacity of 1,000kg Starboard rail shelves Stainless steel drying rail Starboard rail box Shower (hot & cold) Removable security railings Removable carbon fibre swim ladder
AWNINGS	2 x Air Operated retractable: Main Deck aft and Owner's Deck aft 3 x Multiplex removable sunshades: Sun Deck fore & aft and Owner's Deck aft
COVERS	3 x Main Deck sunshades: port, aft and starboard All exterior cushions and storage bags Exterior teak tables Crew tender Life rings Jet ski

10. ENTERTAINMENT EQUIPMENT

TELEVISIONS	Samsung Led TVs in all guest cabins and social areas
--------------------	--

CONTROL SYSTEMS	iPad controllers in all areas for TV, Lights, Curtains, Steward Call
STEREO CD	Local Amplifiers with Airplay, Spotify, Media Connection point including drop-down TV main deck aft (LG)
ENTERTAINMENT SYSTEM	Kaleidescape, Oculus Yacht EYE, Sky TV, US Direct TV, Apple TV

11. GALLEY & LAUNDRY EQUIPMENT

GALLEY	1 x Miele ceramic cooktop (6 zones) 1 x MKN Hansdampf Junior Pro steam oven 1 x Miele double oven 1 x Miele deep fat fryer 1 x Miele microwave 1 x Custom hood 2 x Miele G 7856 dishwashers 1 x Miele CVA 5065 built-in coffee maker 2 x Hoshisaki refrigerators, 600 litres 1 x Hoshisaki Freezer, 600 litres 2 x Eurocave wine refrigerator, (total 64 bottles) 2 x Frigonautica 80 refrigerator 3 x Hoshisaki ice cube makers 1 x Miele undercounter refrigerator 1 x Sub-Zero refrigerated drawer set
LAUNDRY	2 x Stacked professional washing machines 2 x Miele dryers 6.5kg, stainless steel
TENDER BAY	1 x Hoshizaki garbage refrigerator

12. SECURITY & SAFETY EQUIPMENT

SAFETY

2 x SCBA Fire-fighting sets and outfits
 22 x Adult life saving jackets
 4 x Child life saving jackets
 4 x Orange ring bouys
 3 x 12-Man life rafts
 4 x Line throwing apparatus
 1 x EPIRB Jotron

MEDICAL SECURITY

CAT A Medical Kit and Certificate
 Integrated Security Monitoring on AMCS and
 CCTV

FIRE FIGHTING

Closed Circuit TV System
 Marioff HiFog fire extinguishing system
 throughout
 Novec protected Engine Room
 CO2 Extinguishing system - Galley Hood
 1 x Electrical self-priming fire-fighting pump in ER
 1 x Fixed diesel engine driven emergency fire &
 bilge pump installed in aft peak
 Hydrants situated throughout the exterior areas

13. TENDERS & WATERSPORTS EQUIPMENT

TENDERS

1 Guest x 5.65m Williams Diesel Jet 565
 Customized With towing kit, VHF radio, Garman
 Navigation, Shore power with charger,
 Underwater lights, BT Stereo, Seat covers (New
 2021)
 1 Crew x 4.20m Novurania RIB 25hp Yamaha
 (New Motor 2021)

WATER SPORTS

1 x Sea Doo 300 RXT X (New 2021)
 2 x Seabobs
 1 x Wakeboard
 1 x Skis
 Inflatable flume slide
 Inflatable aqua tower
 1 x Bauer Junior II Air Compressor

DIVING

14. MAINTENANCE & REFIT

REFIT 2022 :

- Rebuilt generators
- Full motor and electrical end rebuild
- Hug generator exhaust brick replacement
- Main engine service to Caterpillar recommended hours
- New main engine exhaust spray rings
- New Quantum stabilizer hydraulic power pumps replaced
- All lifting equipment recertified
- Rebuild foredeck crane and change wire for rope
- Ceramic coated all windows
- Replaced navigation monitors in bridge
- Replaced CCTV system
- Light sanding on all exterior teak decks
- Annual service on all safety systems and LSA's
- New washing machines and service dryers
- New wine coolers on main deck
- New crew microwave
- New crew dishwasher

REFIT 2021 :

- Lloyd's annual survey
- Flag annual commercial survey
- Full exterior paint: Complete removal of all hardware, rails, lights, and equipment for paint, Reglazed all windows, fairleads, cutwater, anchor pockets and teak deck, Applied two coats of base and 4 coats of clear Awlgrip, All door and hatch seals
- Machine repolished all stainless-steel handrails and hardware
- New sunshades on Owner's aft deck and main aft deck, renewed existing sunshades
- Replaced old VSat with new VSat units, mast equipment and rack, upgraded to Orbits
- New Pepewave cell internet system, 4 sim card system
- Renewed name boards: port, starboard and stern
- Rebuilt and painted side boarding ladder, passerelle, transformer swim platform, foredeck crane
- Add wireless controllers to anchor windless
- Stainless steel polish cut water and anchor pockets
- Renewed air conditioning, sea and chilled water pumps
- Renewed shaft cooling pumps
- Annual stabilizer service
- New main tender, Williams Diesel Jet 565 (2021)
- New Jet Ski, 1 x Sea Doo 300 RXT X (2021)
- New Yamaha 25hp outboard on crew tender (2021)
- Main engine service to Caterpillar recommended hours
- Generator service to Caterpillar recommended hours
- Rebuild SEA shore power convertors
- Refinished all interior wood floors
- All new exterior cushions and pillows
- New crew mattresses, bedding, towels

- New crew mess cushions
- Paint all exterior chairs
- Refinish all teak exterior tables
- New carpet throughout guest cabins and VIP
- Annual service on all safety systems and LSA's
- Bottom paint & anodes

REFIT 2020 :

- Lloyd's 5-Year survey completed, major items included: Sea valves tested and one replaced, Propeller shafts removed and bearings replaced by supplier, Thrust bearings rebuilt by supplier, All tanks cleaned and inspected
- Flag annual commercial survey
- Main engine service to Caterpillar recommended hours
- Generator service to Caterpillar recommended hours
- Hug generator exhaust brick replacement
- Swivels added to port and starboard anchors
- New line in tender bay overhead crane, load certified after
- Upgraded stabilizer fins to Quantum XT fins, increased system capacity, annual system maintenance

REFIT 2019 :

- Lloyd's annual survey
- Flag annual commercial survey
- All lifting equipment recertified
- New bottom paint
- Exterior paint touch-ups
- Hydraulic systems service and renewed. Steering, passerelle, crane, doors, stabilizers
- New carpeting in Main Salon and Owner's Cabin
- Annual service on all safety systems and LSA's

DISCLAIMER

This document is not contractual. All specifications are given in good faith and offered for informational purposes only. The publisher and company do not warrant or assume any legal liability or responsibility for the accuracy, completeness, or usefulness of any information and/or images displayed. Yacht inventory, specifications and charter prices are subject to change without prior notice. None of the text and/or images used in this brochure maybe reproduced without written consent from the publisher