



**ILLUSION**





ILLUSION is a Dutch-built Heesen 6500 yacht with vast, well designed outside spaces and showcases a stylish, fresh modern interior by the supremely talented Bannenberg & Rowell design team.

Delivered in 2013 and fresh from a full refurbishment in 2019, this 65m (213.3ft) yacht has a sizeable 106sqm (1,141sqft) sun deck that guests love, with two lounge areas, one shaded and one sunny, a fully equipped sit-up bar and a large jacuzzi with sun pads aft. Surrounded by wraparound tinted windscreens, the calm and cool sun deck dining area can be utilized even on the windiest of days.

As popular as the sun deck undoubtedly is, the real star of this spectacular show is the spacious air-conditioned beach club with fully equipped bar, sauna, day head and shower. A 22sqm (237sqft) fold-out swimming platform and a 10sqm (108sqft) drop-down sea terrace to port, bring guests a genuine sense of the outdoors enhanced by the natural light shimmering through the glass-bottomed pool on the main deck aft. It's a stunning space. With additional lounging, sunbathing, and nine other dining areas on the foredeck, bridge deck and main deck, she has abundant options for social and intimate al fresco relaxation, fun and entertainment.

Inside, the grand polished steel and leather staircase encircled by walls lined with macassar links the main deck's sophisticated bar and striking formal dining room with the bridge deck's intimate sky lounge and bar.

She welcomes 12 guests in six double cabins, a full-beam master suite on the main deck with study and full-height glass sliding doors opening onto a private breakfast balcony to starboard, a VIP suite on the bridge deck and four lower deck double cabins.

ILLUSION has a top speed of 28kn, cruising happily at 15kn, and her Van Oosannen-designed hull was built for maximum efficiency, significantly reducing fuel consumption and emissions for guilt-free island-hopping. Add five zero-speed gyro stabilisers for comfort underway or while at anchor and you have an unforgettable experience ready and waiting.



# At a glance



Build

**2013 (refurbished 2019), Heesen, The Netherlands**

---



Length

**65m (213.3ft)**



Guests

**12**



No. of guest cabins

**6**

---

## Key features

- **Full beam master suite on main deck with private study and private balcony**
  - **Modern graceful design incorporating an abundance of glass to create a natural light filled interior**
  - **Generous 106 square meter sun deck complete with bar and jacuzzi perfect for entertaining**
  - **Expansive air-conditioned beach club boasts a 22 square meter swim platform and 10 square meter drop down side-balcony**
  - **Beach club offers a sauna, shower room, day head and fully equipped bar**
  - **Zero speed stabilisers**
-



**Main salon view forward**





**Main salon view aft**





**Main dining**





**Main dining**







**Master entrance/ private office**





**Master**





## Master





**Master en suite**





**Foyer & staircase**





## Guest cabins





**Sky lounge**





**Sky lounge**





**Sky lounge bar**





**Main deck aft & pool**





**Main deck aft**





**Main deck view forward**





**Main deck view aft**





**Main deck aft pool**





**Bridge deck aft**





**Sun deck jacuzzi & bar**







**Foredeck lounging**





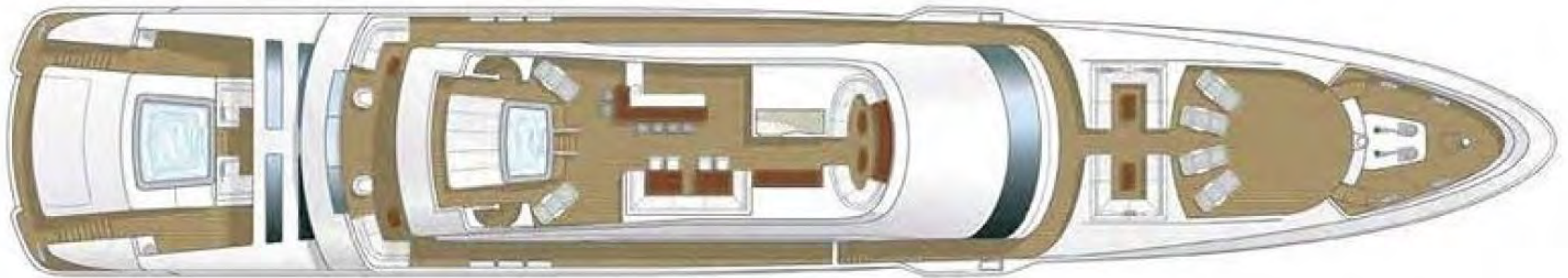
**Beach club**





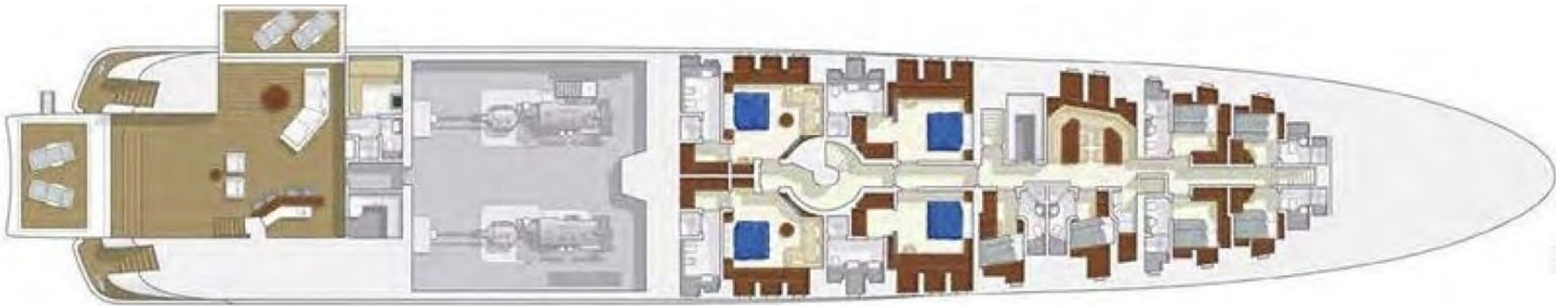
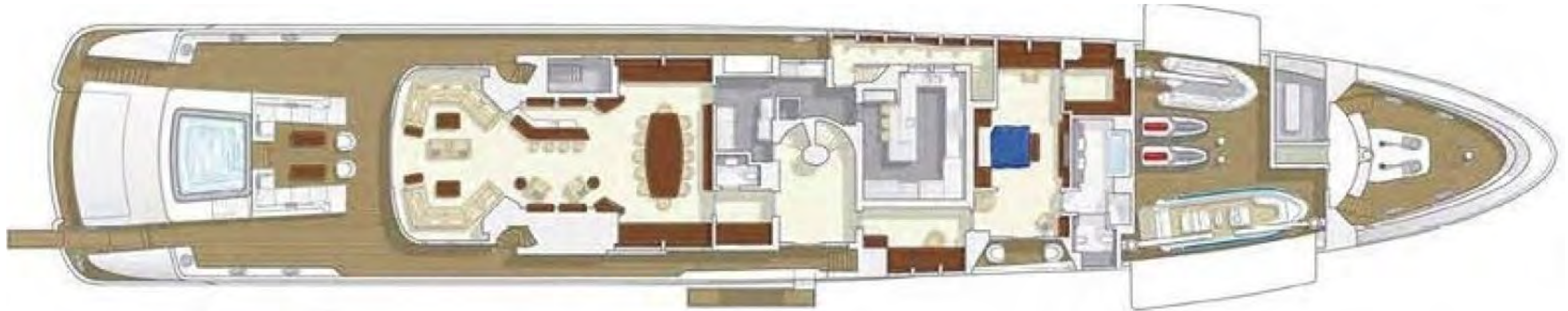


# Deck plans





# Deck plans





# Specification



Length  
**65m (213.3ft)**



Beam  
**11.3m (37.1ft)**



Draft  
**3.1m (10ft)**



Gross Tonnage  
**961**



Interior design  
**Bannenberg & Rowell**



Build  
**2013 (refurbished 2019), Heesen, The Netherlands**



Guests  
**12**



Cabins  
**12**



Cabin types  
**6 x double**



Crew  
**13**



Maximum speed  
**28**



Cruising speed  
**15**



Fuel consumption (cruising)  
**350 litres per hour**



Engines  
**2 x 5,560hp MTU**



Watersports

**11.6m (38.2ft) PKD Custom tender, 7m (23ft) Novurania tender, 4.3m (14ft) Castoldi tender, 2 x Sea-Doo jetskis, 2 x Foil surf boards, waterskis, wakeboard & tows, 2 x SeaBobs 2 x stand up paddle boards, 2 x Schiller water bikes, snorkelling gear**



Communication & Entertainment

**State-of-the-art audio-visual system, Centralised server for movies & music on demand, Satellite television (where geographically available), Flat screen televisions in each cabin and in guest areas, Satellite & cellular communications facilities, VSAT, Wi-Fi internet**

All particulars are believed correct but cannot be guaranteed